

+



ARMYJET

AJ-1801i16E

Armyjet Manual for new printer installation

Warning

This manual is only suitable for Armyjet printers with SY boards. If you install other non-Armyjet printers and meet problems, Armyjet will not take responsibility. Armyjet owns the full copyright of this manual.

Armyjet will update its printers each year. So there may have some differences from the real printers.

1 Notes about installation

1.1 Installation environment

- Be sure that there is enough space
- Good environment: Temperature within 20-30°C, moisture within 40-60%
- Far away from sunshine, strong light and fire
- No dust.

1.2 Cautions

- Armyjet Power cable can only be used on Armyjet printers. Original power cable is more stable.
- The printer should be connected to outlet with earth wires.
- Power should meet local requirements.
- Don't use damaged wires
- Earth wire should be installed correctly.

1.3 Cautions in operation

- After power on, don't touch head and head cable
- If you need to move printer or replace any parts like head or head cable, please power it off first.
- Clean or do maintenance on the printer, please power off the printer first.
- Never pour off waste ink into natural waters or something like it.
- Once you open the ink bottle, please use it as soon as possible. It's bad for printing quality after you open the ink bottle for a long time and don't use it.
- Don't knock or shake the ink bottle, it will spill out ink.
- Keep the printer clean. Dust or liquid will cause electric leakage.
- Don't use high pressure air rifle to clean the printer.

1.4 Personnel Security Guide

- Keep the ink out the reach of Children.
- Never drink ink. If you happen to swallow some ink, please see the doctor as soon as possible.
- If some ink spills out on your skin, please clean with lots of water and some soap immediately.
- If ink happens to enter your eyes, please clean it with clean water.
- Add or replace ink or something others related to ink, please wear glove, surgical mask, and protective eye shields.

Part list



Item	Part name	Quantity	Standard
①	Power cable	1	
②	USB cable	1	
③	Photoprint DX version	1	
④	Ink dampers	2	
⑤	Pedestal Screw M6X20	10	
	Printhead Screw M3x6	6	
⑥	Head cable	4	
⑦	USB flash drive	1	
⑧	24V Sensor	1	

2、Printer installation



Front



Back

2.1 Pedestal Installation

2.1.1 Pedestal parts

Direction: Face the printer, guide by your left and right hands.

Front: F Back: B Left: L Right: R



① Foot stool



② Leg



③ Pull Rod



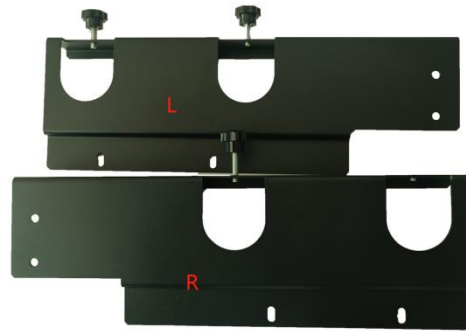
④ Base strutting piece



⑤ Waste ink bottle



⑥ mechanical fastener system



⑦ Take up system



⑧ Fixed parts for fans

2.1.2 Pedestal Installation

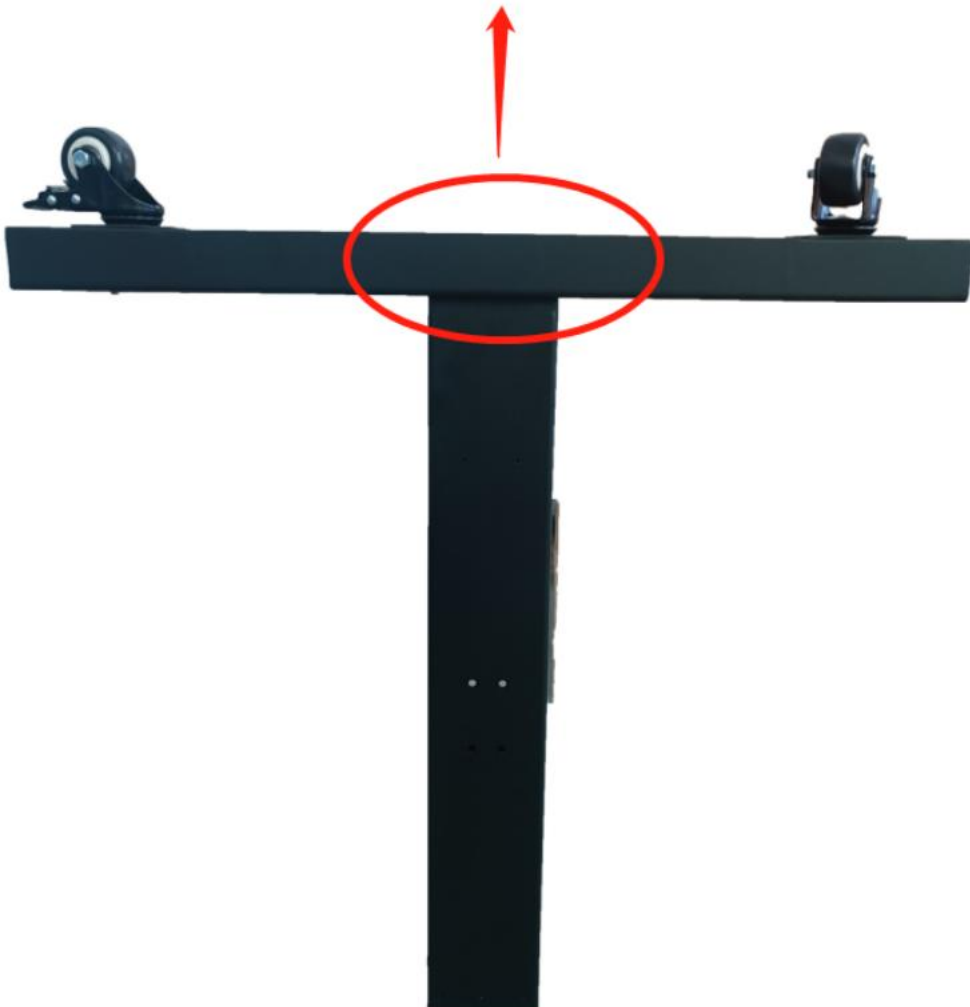


Front



Side

①——②



②—③—②



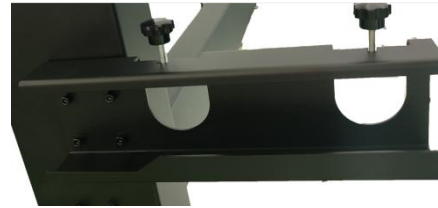
②—④



②—⑤

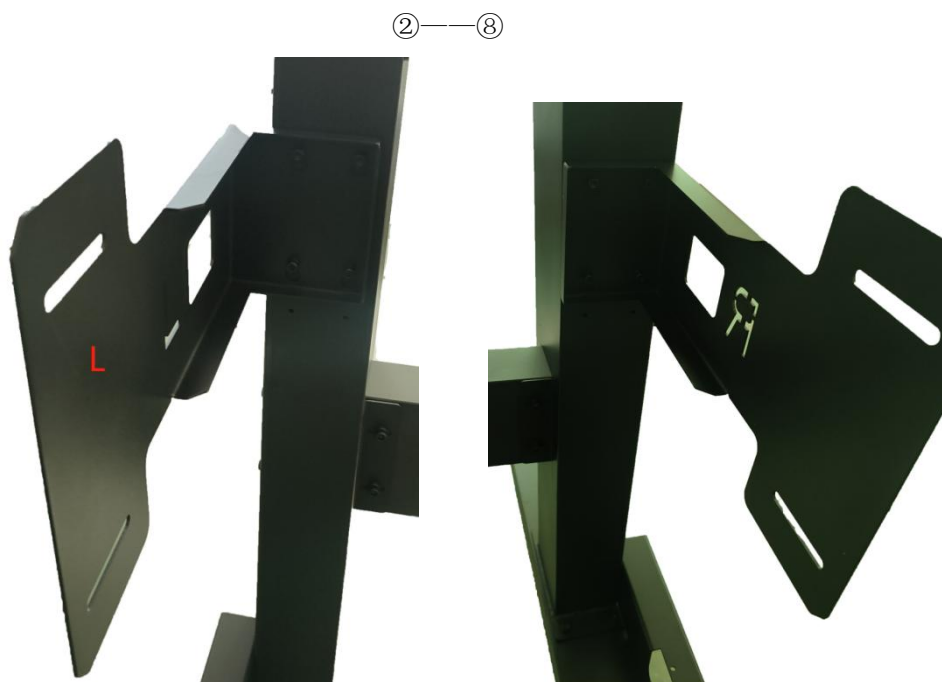


②——⑥



②——⑦





2.2 Connect printer body with Pedestal

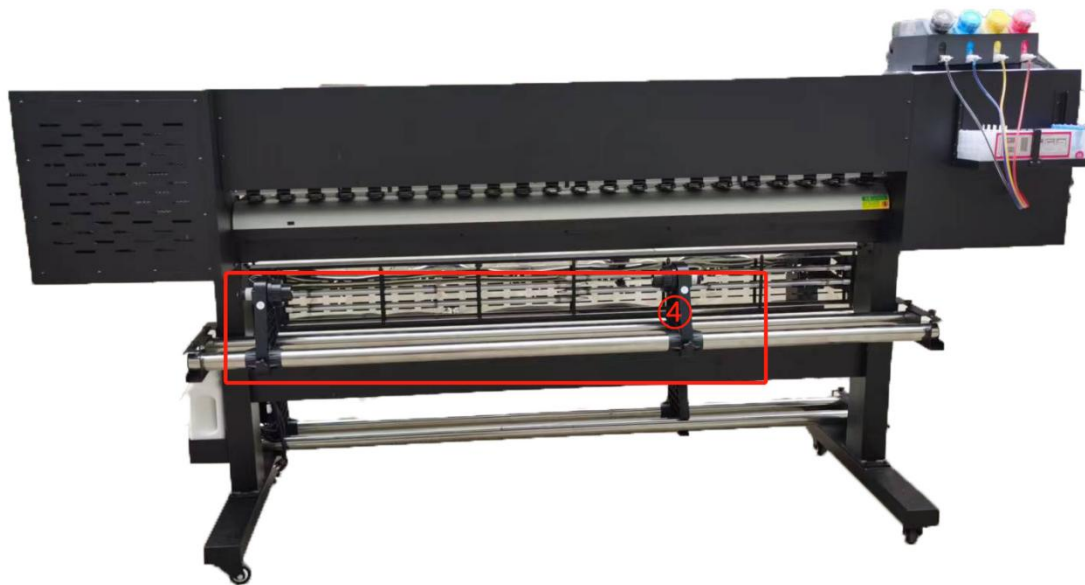
2.2.1. Put the printer body on the pedestal, pay attention the four screws we marked, using these screws(M6X16) to fasten the printer



2.3 Ink supply system installation



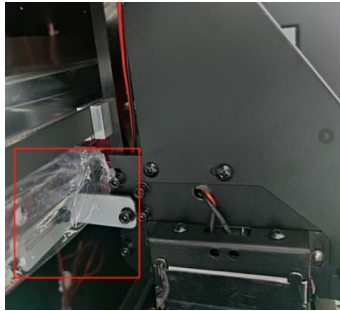
2.4. Install heating fans, take up system, waste ink pot, feeding system as below.



3. Printer Adjustment

3.1 Before power on your printer

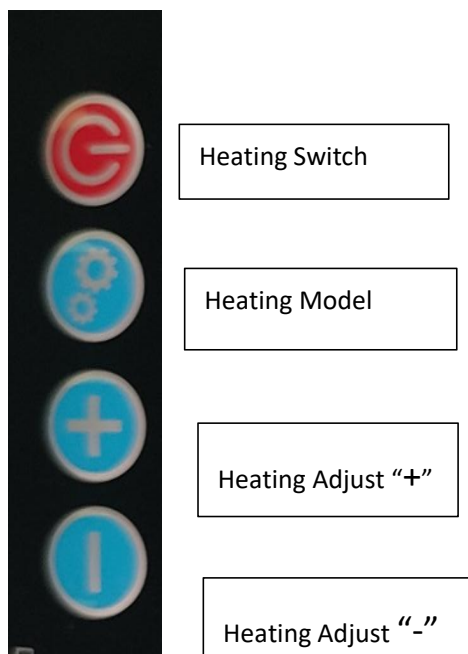
Before you power on the printer, please remove the fixing parts on the carriage and peel off the film on the guide rail.



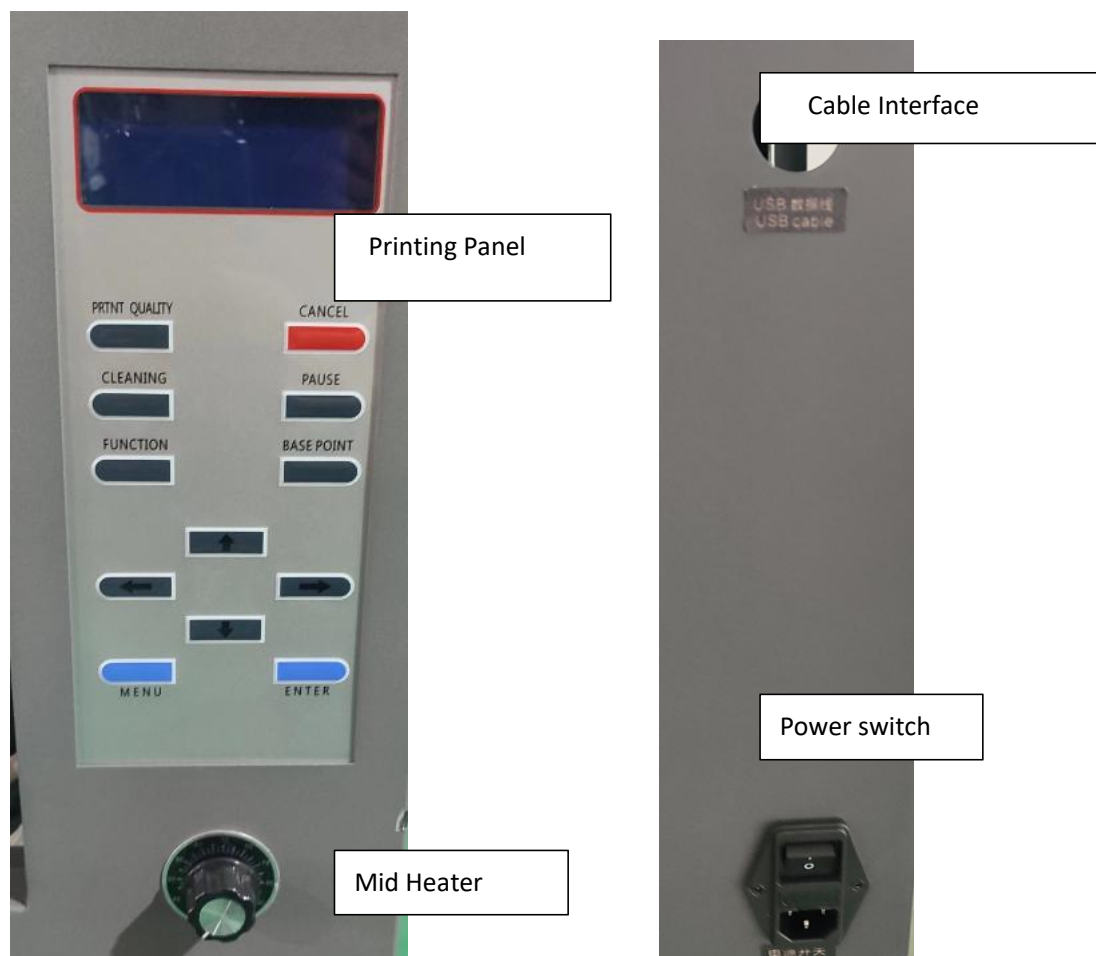
3.2 Functions



① Temperature Control



②Sucking adjust



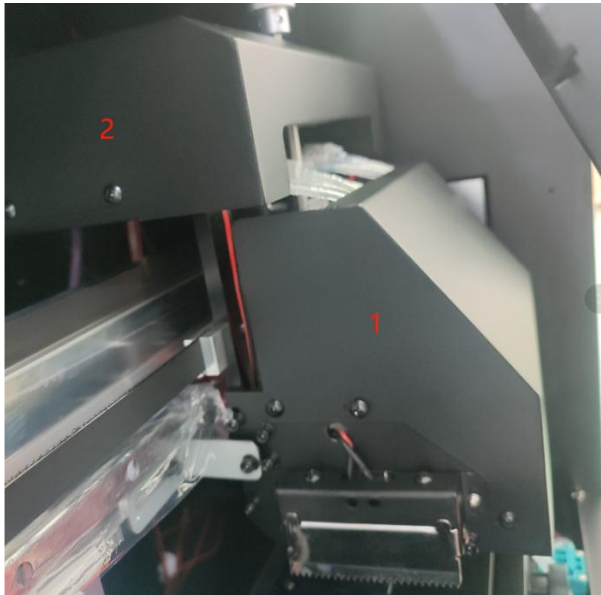
3.3 How to install printhead

3.3.1 Before installing printhead

1. After initialization, screen will show like below. And then test all functions from the panel and then power off the printer.

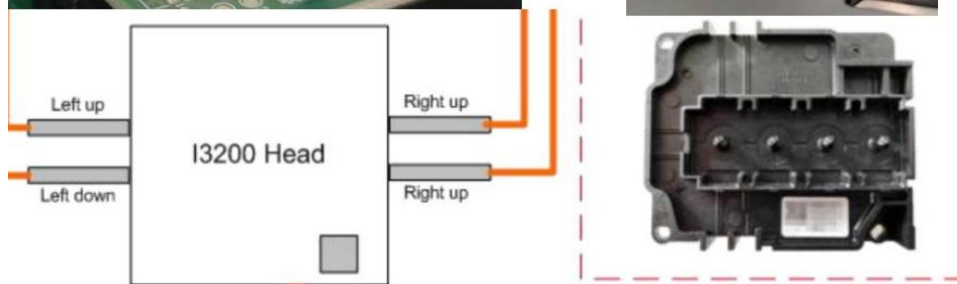
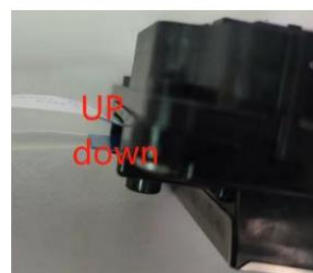
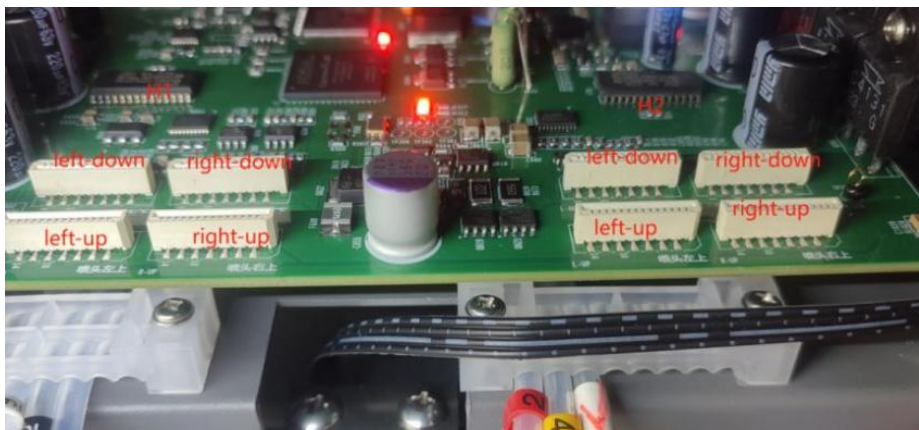


2. Remove the carriage cover and head board cover



3. Install Printhead

① Connect head cable like the image below.



Connect head cable carefully, or it will burn your head or head board.

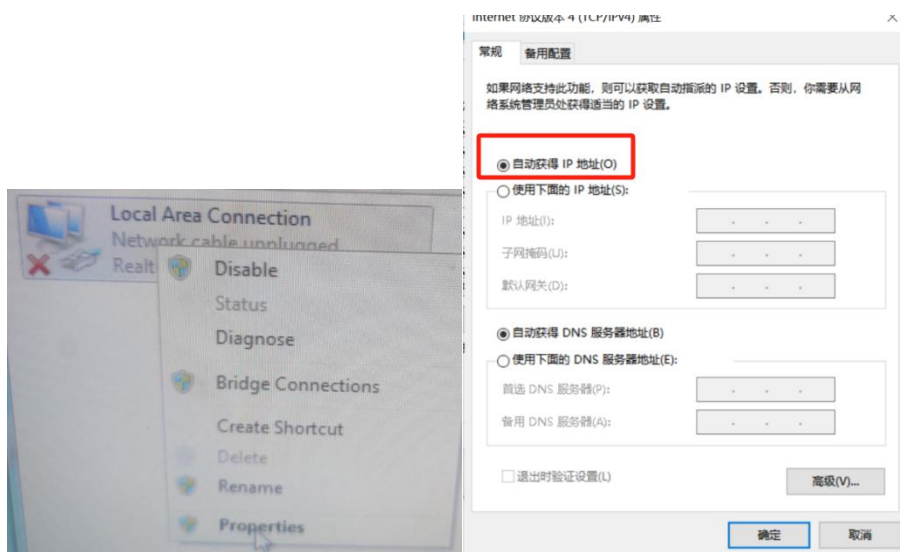
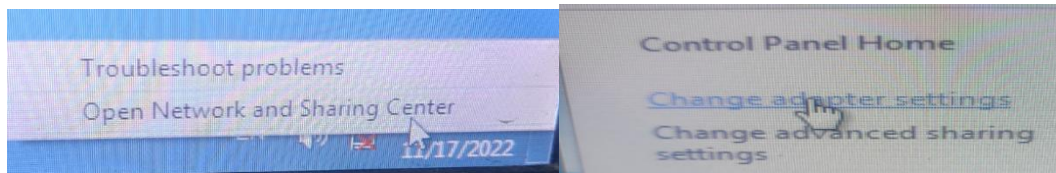
②.Install head on head plate like below.

③.After power on, loading ink. Load ink from ink pump and press cancel. After cleaning, choose weak cleaning to make sure that all nozzles can print

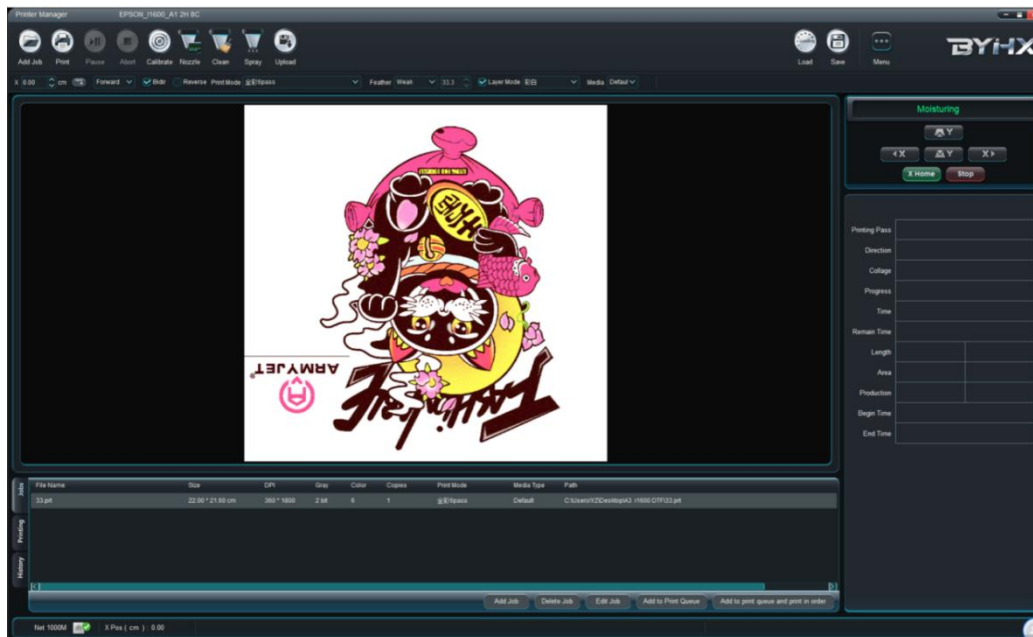


4. How to install software

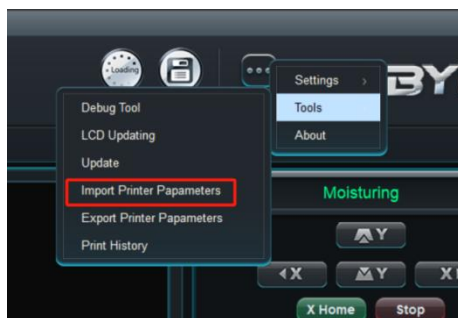
(1) Connection should be done like below



(2) Open the software like below

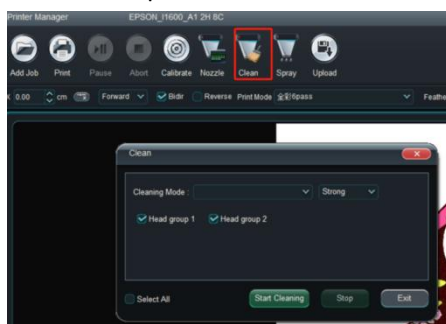


Note: For the first use, please import parameters like below.

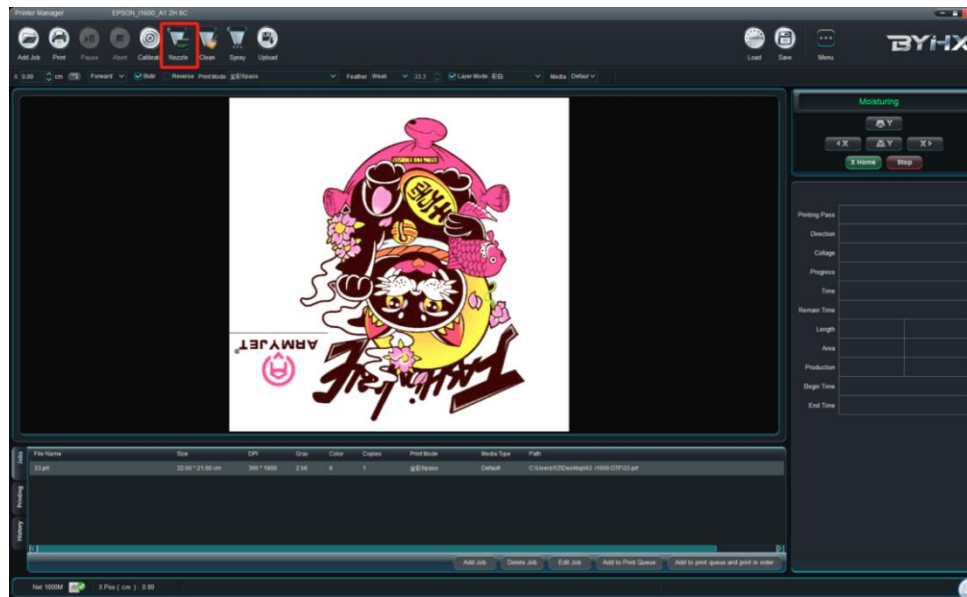


名称	修改日期	类型	大小
Firmware	2023/10/28 12:11	文件夹	
ICC Profile_photoprint	2023/10/28 12:11	文件夹	
Printer Manager	2023/10/28 12:11	文件夹	
Waveform	2023/10/28 12:11	文件夹	
11600 ECO 20231023 params.zip	2023/10/24 14:49	360压缩 ZIP 文件	4

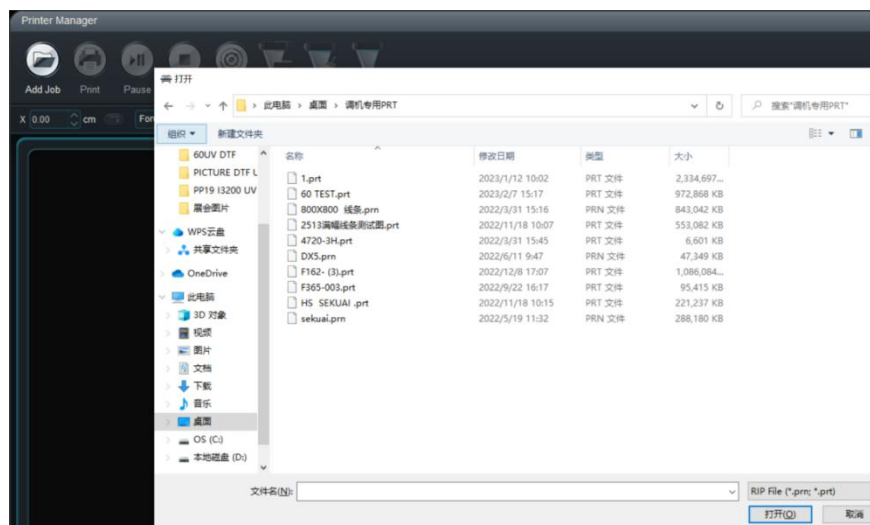
(3) Clean printhead

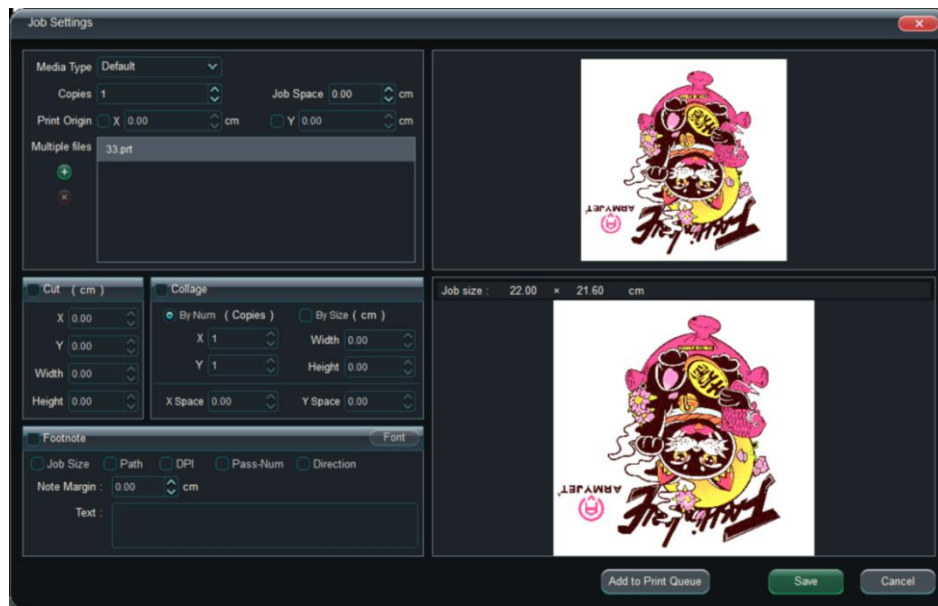


(4) Nozzle check,

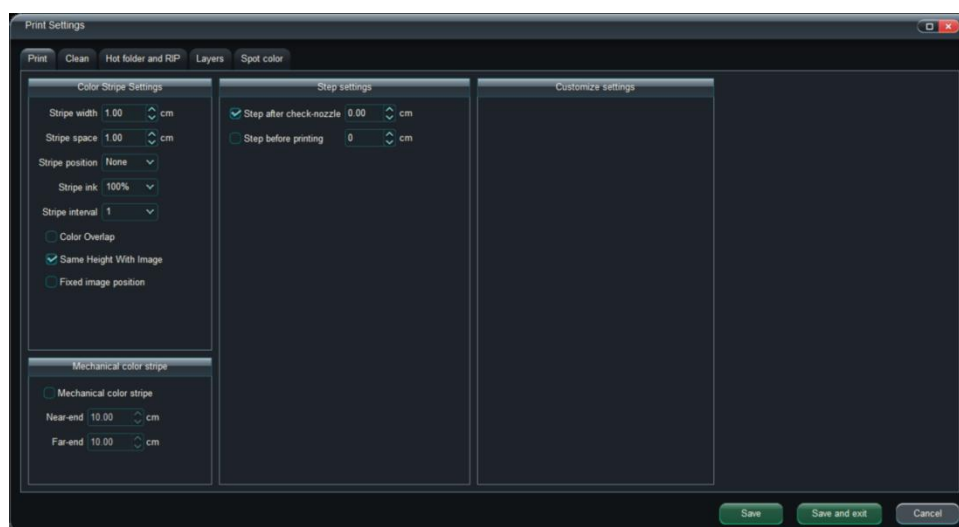
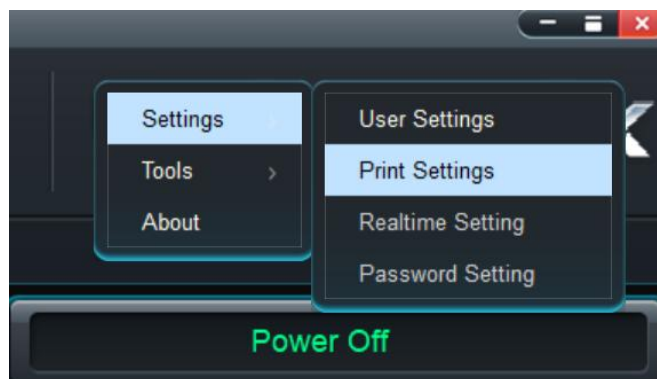


(5) Add and edit works

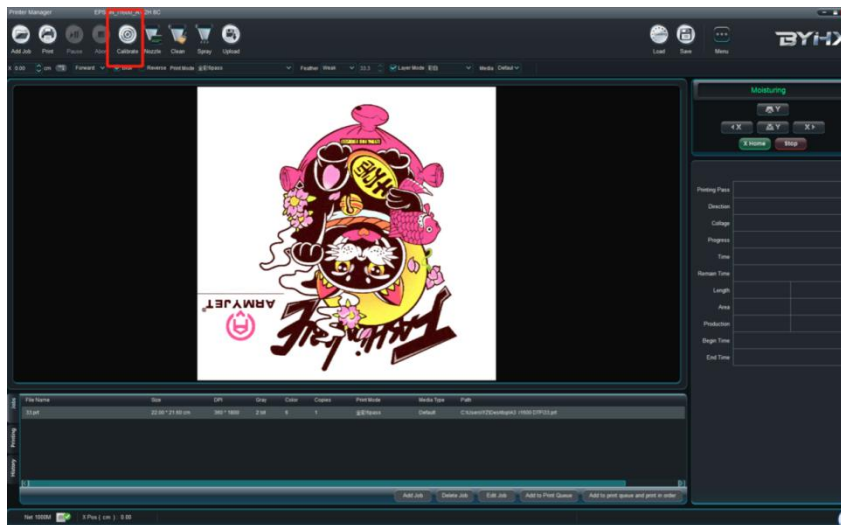




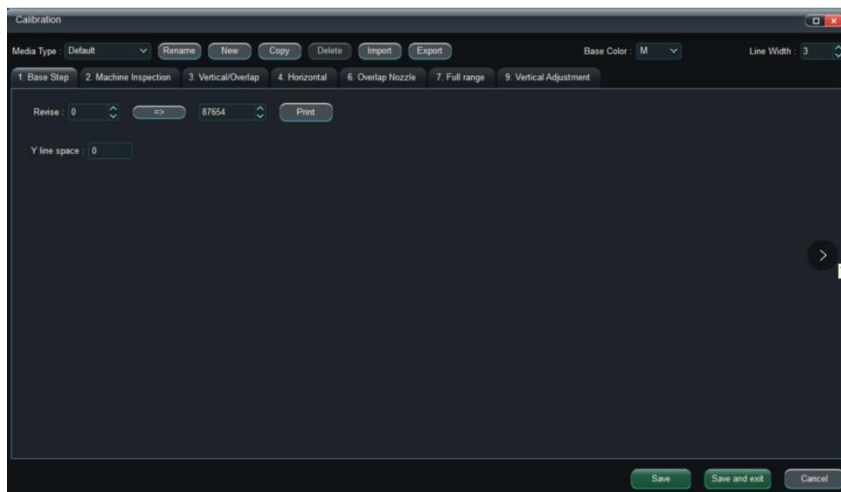
(6) Setting should be made according to your requirements



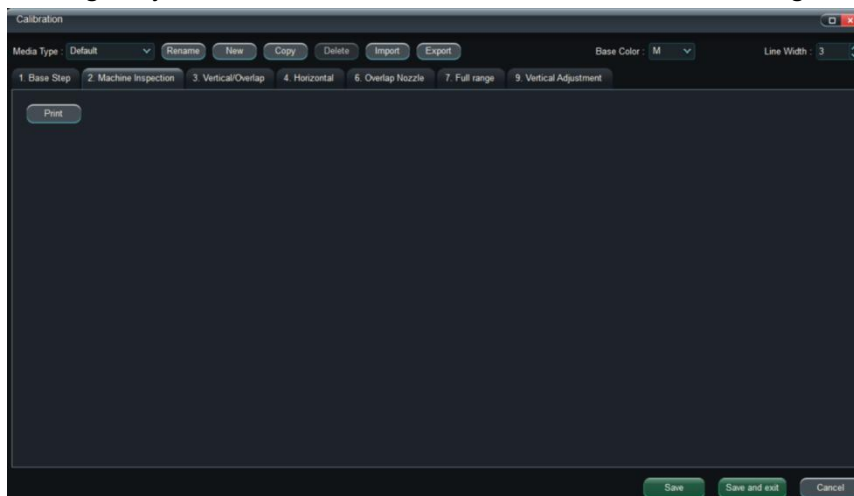
(7) Calibration and finish calibration



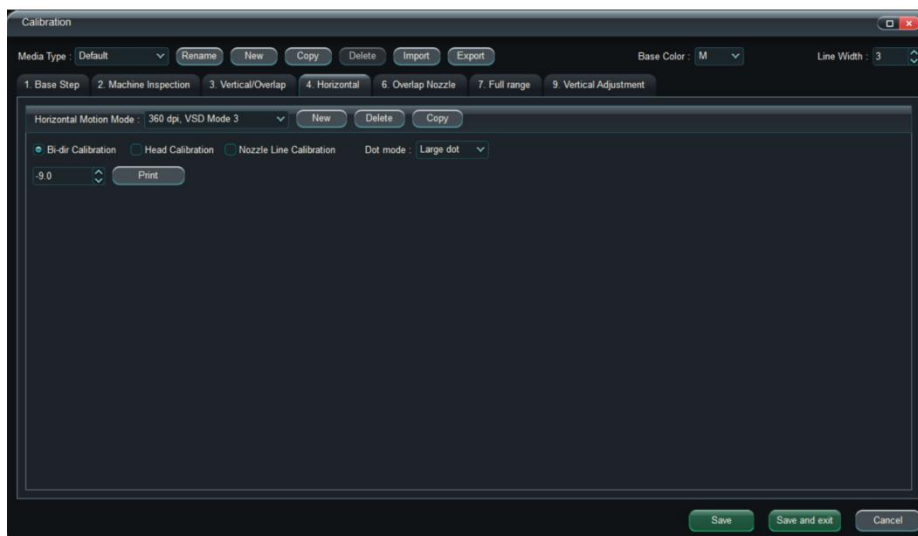
- ① Step adjustment Make sure that all should be overlap on "0".



- ② Angle adjustment. Head should vertical, connection should be aligned fully.

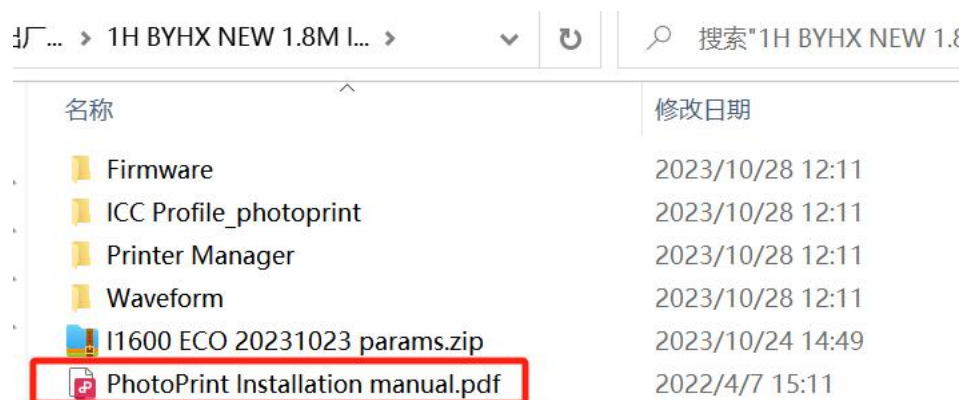


③ Bidirectional adjustment, should be aligned with “0” fully.



5. How to Install Photoprint

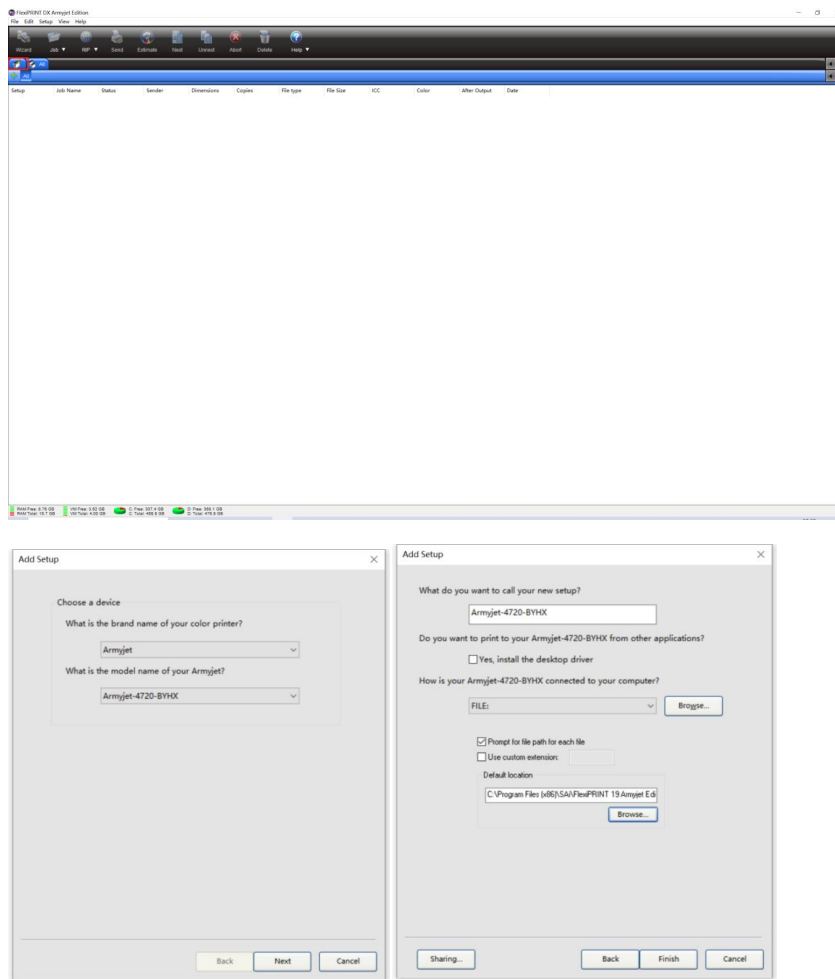
“PhotoPrint Installation manual” About how to install in details, please take a look at PhotoPrint Installation manual.



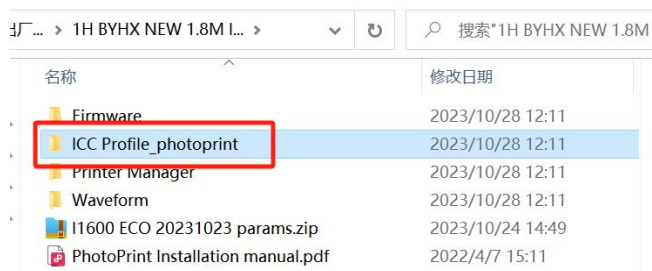
3.1 Click this Icon to open photoprint software.





② Add printer. Do as below.



③ Open the **ICC Profile_photoprint**





④Copy all the files as below.

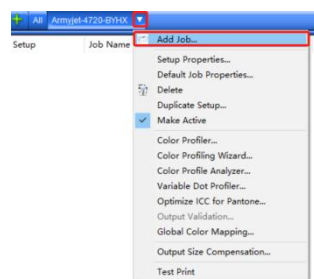
Profile_photop...	BYHX-4720	↕	↺	🔍 搜索"BYHX-4720"
名称		修改日期		
	AJ_BYHX_I1600_ECO_new1_4pass 360x120...	2022/6/9 13:42		
	AJ_BYHX_I1600_ECO_new1_6pass 360x180...	2022/6/9 14:15		

⑤ Open the file where you install photoprint and find ICC profile→BYHX-4720, and the paste them here.

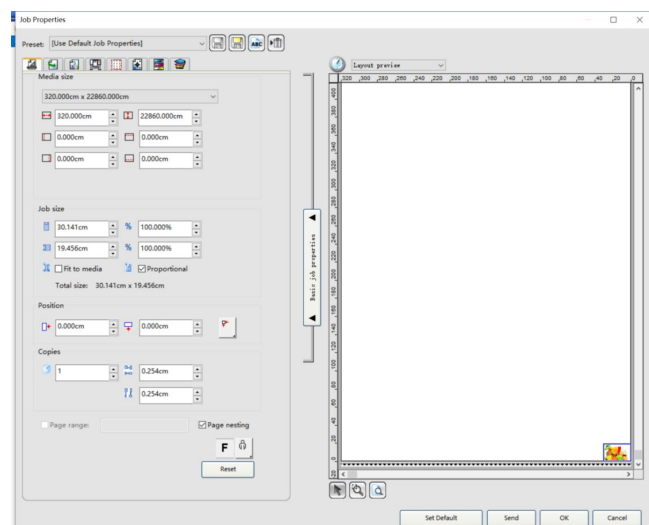
脑 > OS (C:) > Program Files (x86) > Sai > FlexiPRINT 19 Armyjet Edition > ICCProfile > BYHX-4720

	AJ_BYHX_I1600_ECO_new1_4pass 360x120...	2022/6/9 13:
	AJ_BYHX_I1600_ECO_new1_6pass 360x180...	2022/6/9 14:

⑥ Add Job



Edit the image



Choose output profile and then click Send.

