

+



# ARMYJET

AJ-1801iE-Hoson

Armyjet Manual for new printer installation

## Warning

This manual is only suitable for Armyjet printers with hoson boards. If you install other non-Armyjet printers and meet problems, Armyjet will not take responsibility. Armyjet owns the full copyright of this manual.

Armyjet will update its printers each year. So there may have some differences from the real printers.

# 1 Notes about installation

## 1.1 Installation environment

- Be sure that there is enough space
- Good environment: Temperature within 20-30°C, moisture within 40-60%
- Far away from sunshine, strong light and fire
- No dust.

## 1.2 Cautions

- Armyjet Power cable can only be used on Armyjet printers. Original power cable is more stable.
- The printer should be connected to outlet with earth wires.
- Power should meet local requirements.
- Don't use damaged wires
- Earth wire should be installed correctly.

## 1.3 Cautions in operation

- After power on, don't touch head and head cable
- If you need to move printer or replace any parts like head or head cable, please power it off first.
- Clean or do maintenance on the printer, please power off the printer first.
- Never pour off waste ink into natural waters or something like it.
- Once you open the ink bottle, please use it as soon as possible. It's bad for printing quality after you open the ink bottle for a long time and don't use it.
- Don't knock or shake the ink bottle, it will spill out ink.
- Keep the printer clean. Dust or liquid will cause electric leakage.
- Don't use high pressure air rifle to clean the printer.

## 1.4 Personnel Security Guide

- Keep the ink out the reach of Children.
- Never drink ink. If you happen to swallow some ink, please see the doctor as soon as possible.
- If some ink spills out on your skin, please clean with lots of water and some soap immediately.
- If ink happens to enter your eyes, please clean it with clean water.
- Add or replace ink or something others related to ink, please wear glove, surgical mask, and protective eye shields.

## Part list



Item	Part name	Quantity	Standard
①	Power cable	1	
②	USB cable	1	
③	Photoprint DX version	1	
④	Ink dampers	2	
⑤	Pedestal Screw M6X20	10	
	Printhead Screw M3x6	6	
⑥	Head cable	4	
⑦	USB flash drive	1	

## 2、Printer installation



Front



Back

## 2.1 Pedestal Installation

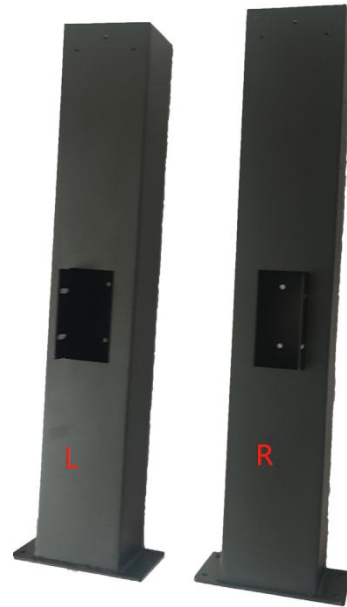
### 2.1.1 Pedestal parts

**Direction:** Face the printer, guide by your left and right hands.

Front: F      Back: B      Left: L      Right: R



① Foot stool



② Leg



③ Pull Rod



④ Base strutting piece



⑤ Waste ink bottle



⑥ mechanical fastener system



⑦ Take up system



⑧ Fixed parts for fans

## 2.1.2 Pedestal Installation



Front



Side



①——②



②—③—②



②—④



②—⑤

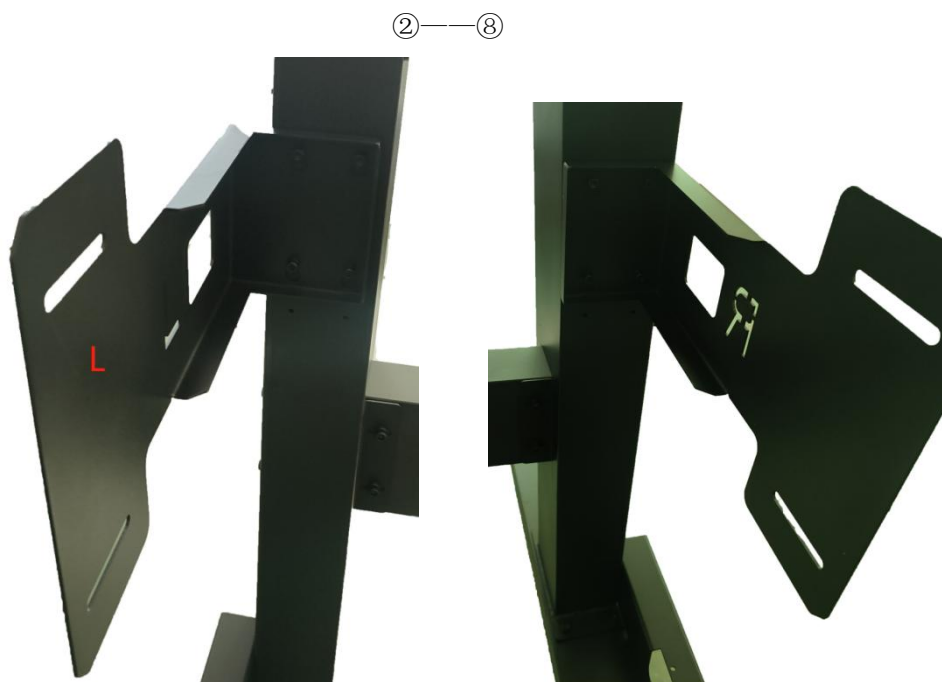


②——⑥



②——⑦





## 2.2 Connect printer body with Pedestal

2.2.1. Put the printer body on the pedestal, pay attention the four screws we marked, using these screws(M6X16) to fasten the printer



### 2.3 Ink supply system installation



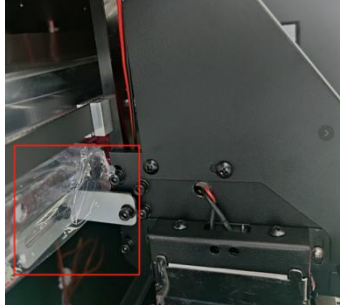
2.4. Install heating fans, take up system, waste ink pot, feeding system as below.



### 3. Printer Adjustment

#### 3.1 Before power on your printer

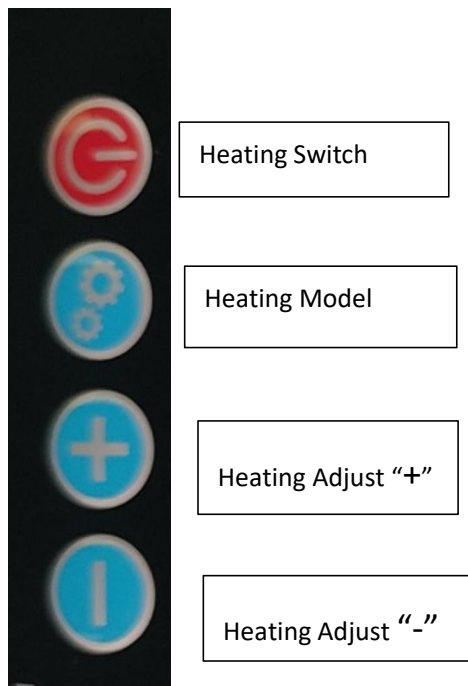
Before you power on the printer, please remove the fixing parts on the carriage and peel off the film on the guide rail.



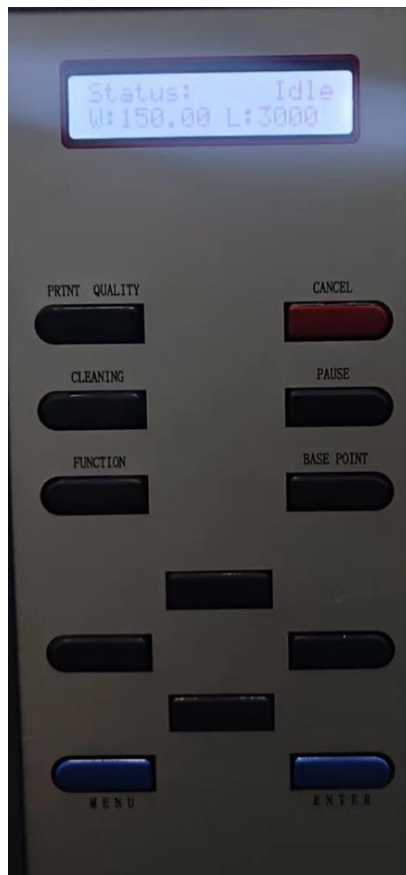
#### 3.2 Functions



##### ① Temperature Control



## ②Sucking adjust



Printing Panel



Cable Interface

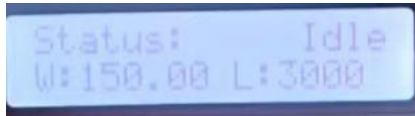
Power switch



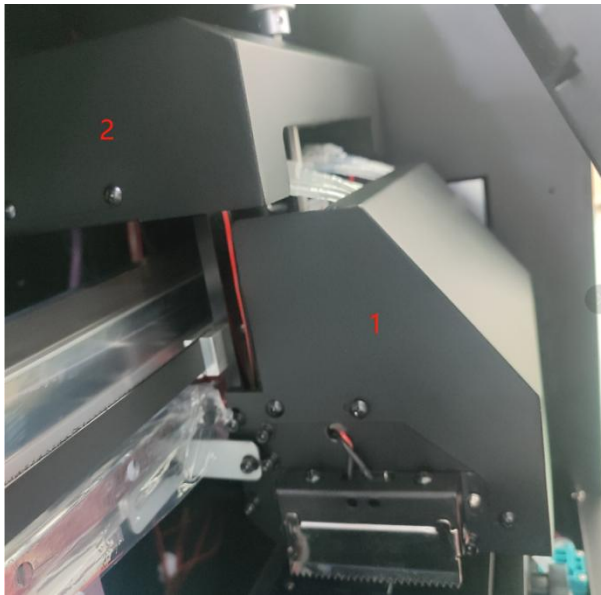
### 3.3 How to install printhead

#### 3.3.1 Before installing printhead

1. After initialization, screen will show like below. And then test all functions from the panel and then power off the printer.

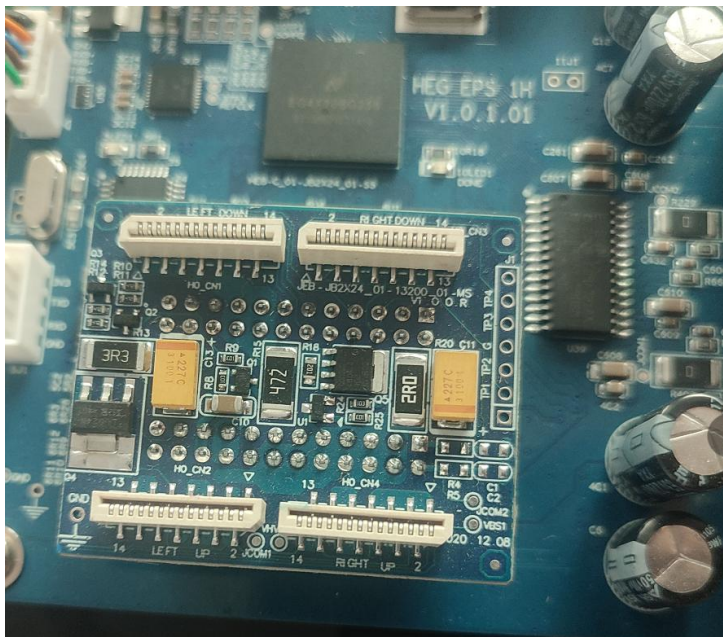


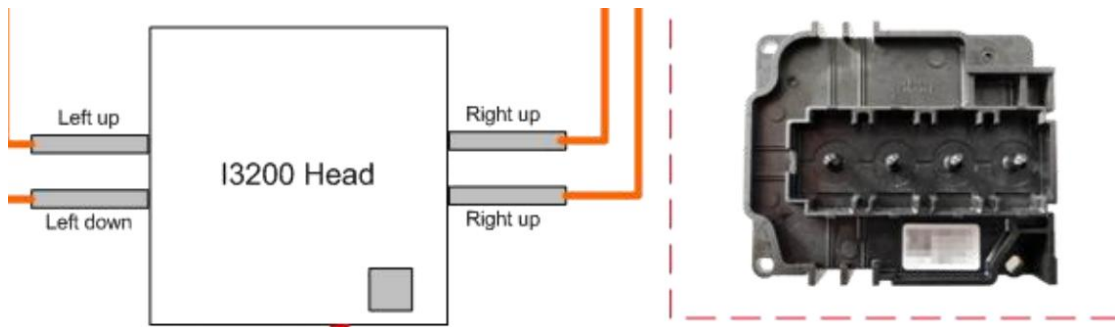
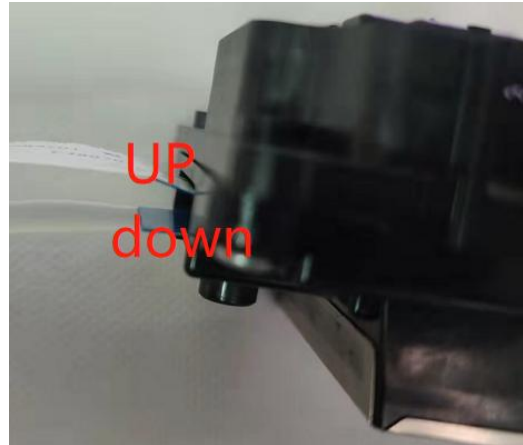
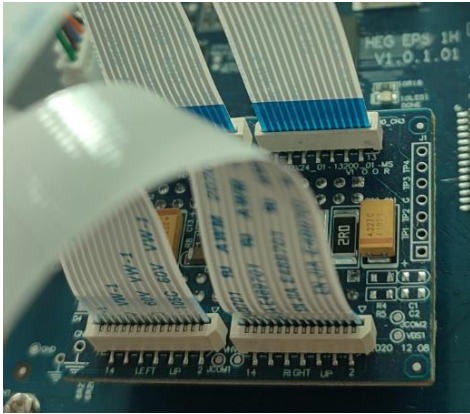
2. Remove the carriage cover and head board cover



3. Install Printhead

① Connect head cable like the image below.





Connect head cable carefully, or it will burn your head or head board.

②.Install head on head plate like below.

③.After power on, loading ink. Load ink from ink pump and press cancel. After cleaning, choose weak cleaning to make sure that all nozzles can print.



Menu→Head maintain→Fill ink

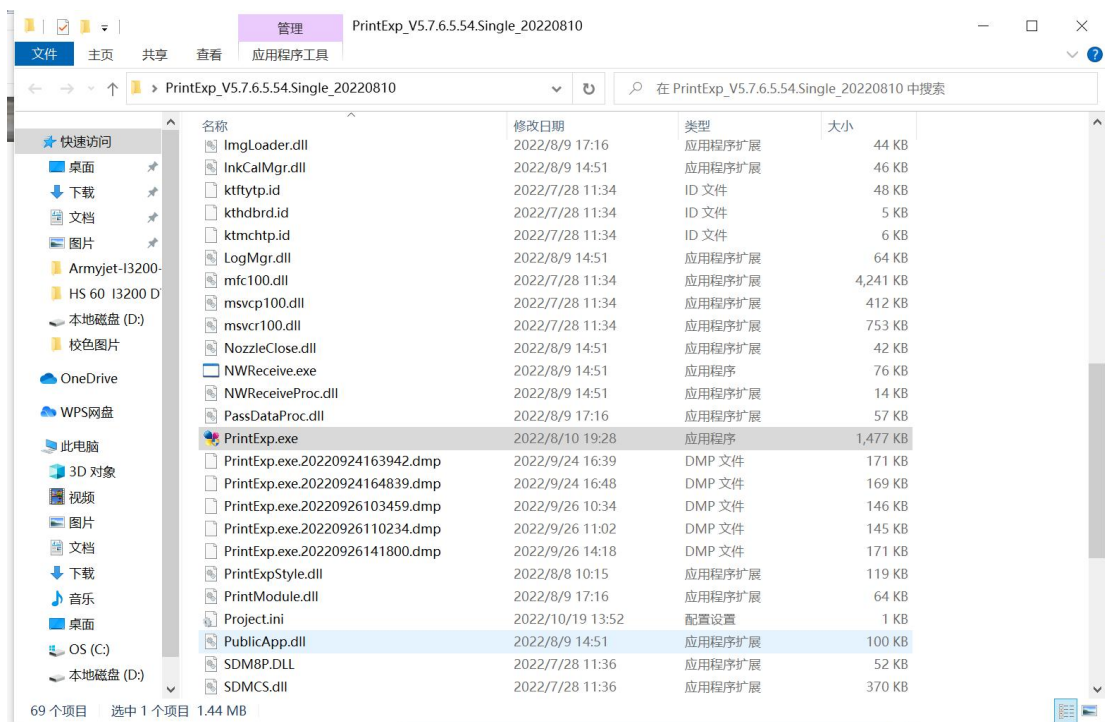
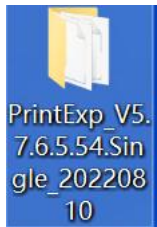


Material select  
\*Head maintain

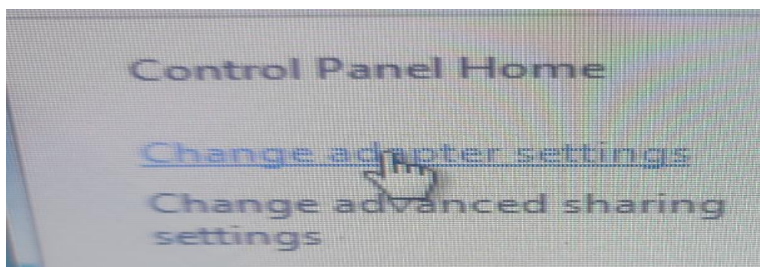
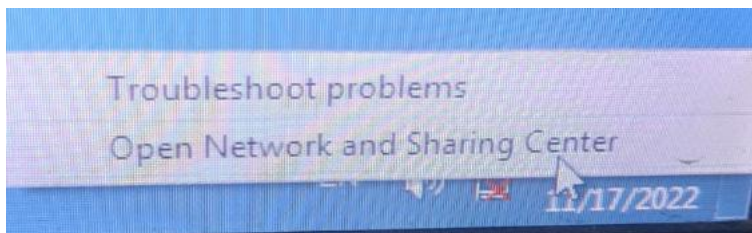
Auto clean  
\*Fill ink

## 4. How to install software

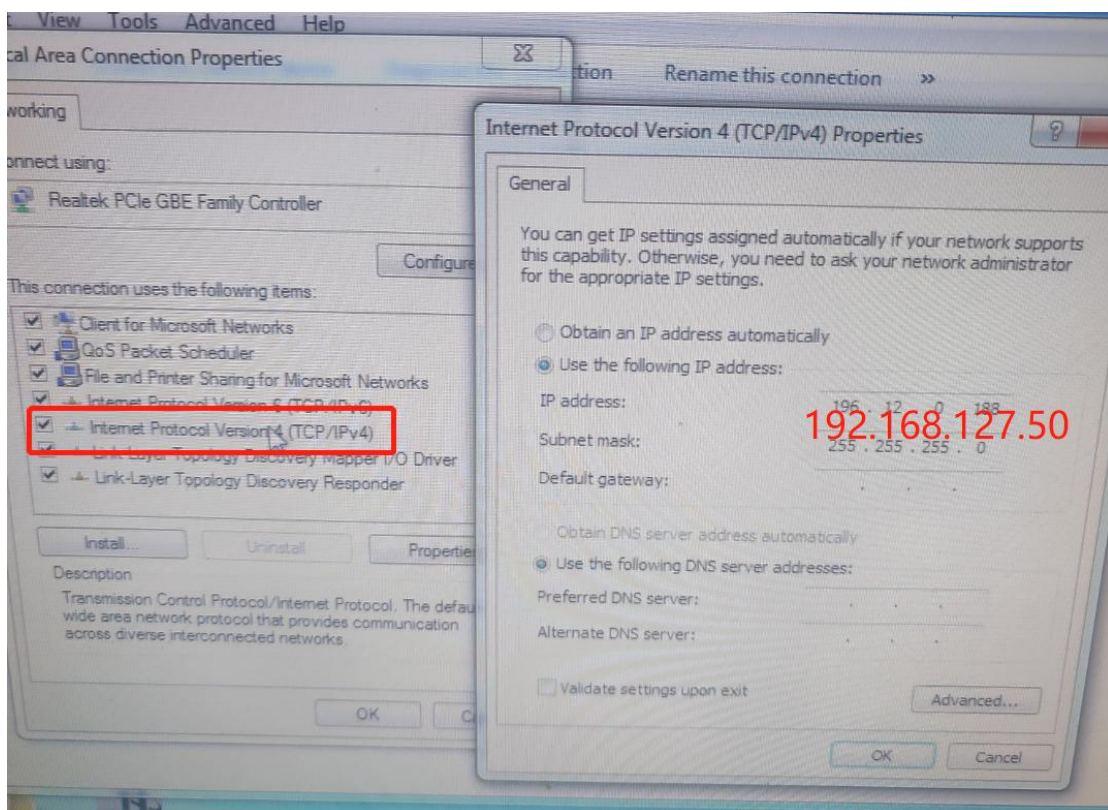
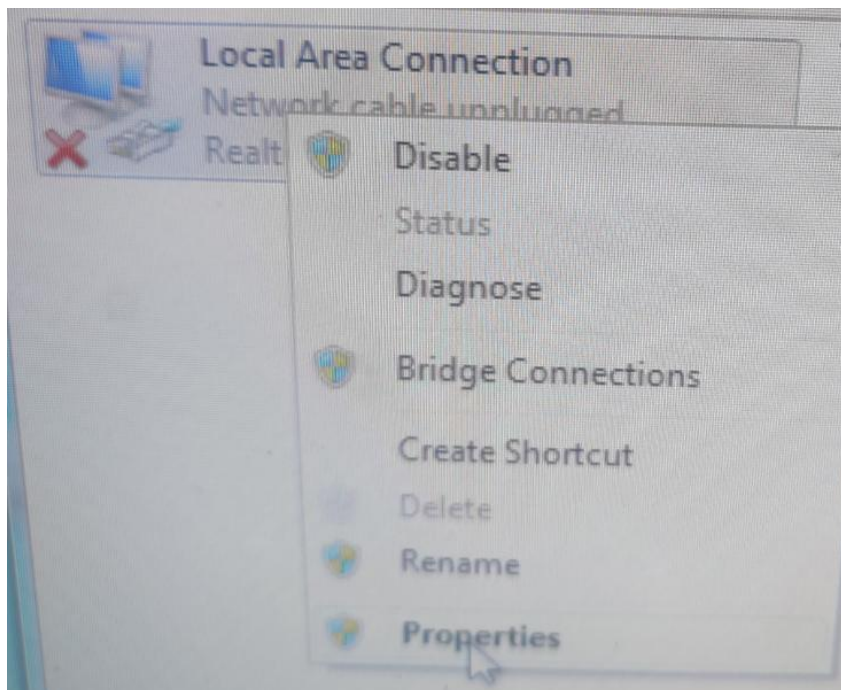
Don't need to install the software. Just click "PrintExp" and then you can use it.



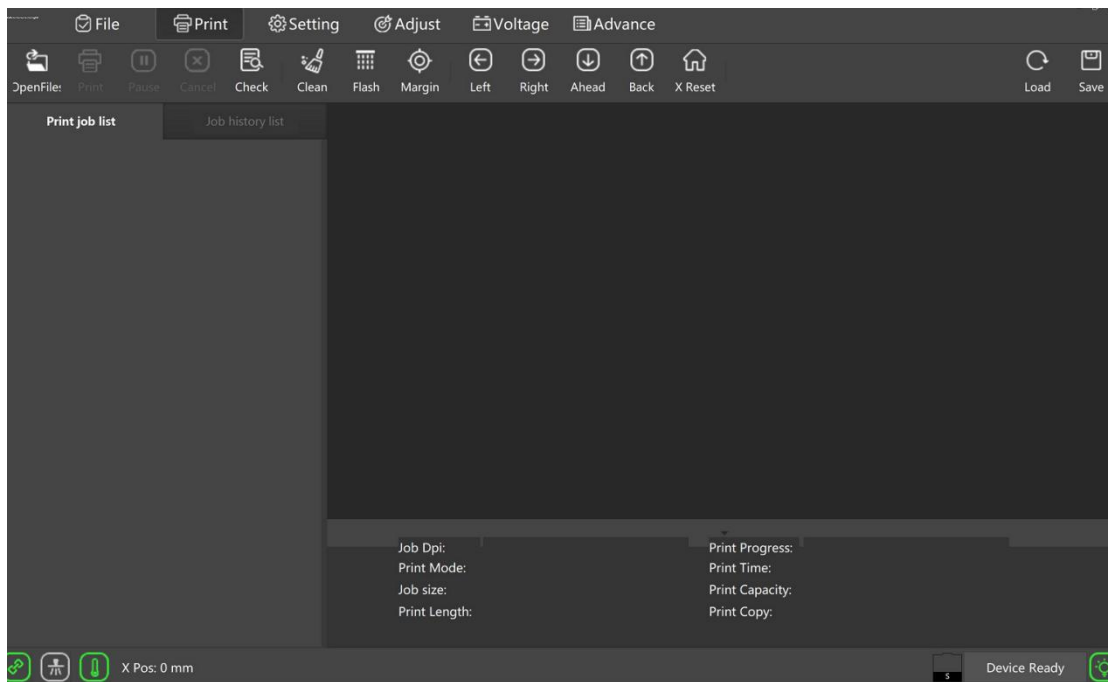
4.1 Connect printer with computer, you need to use the IP address we offer.



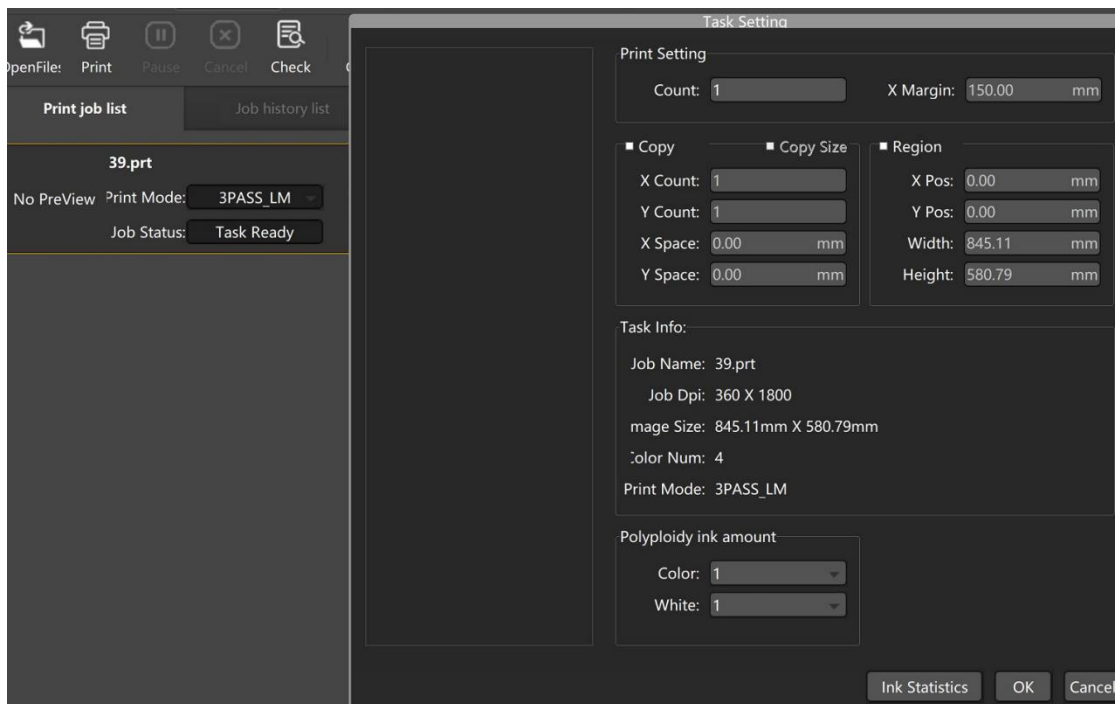




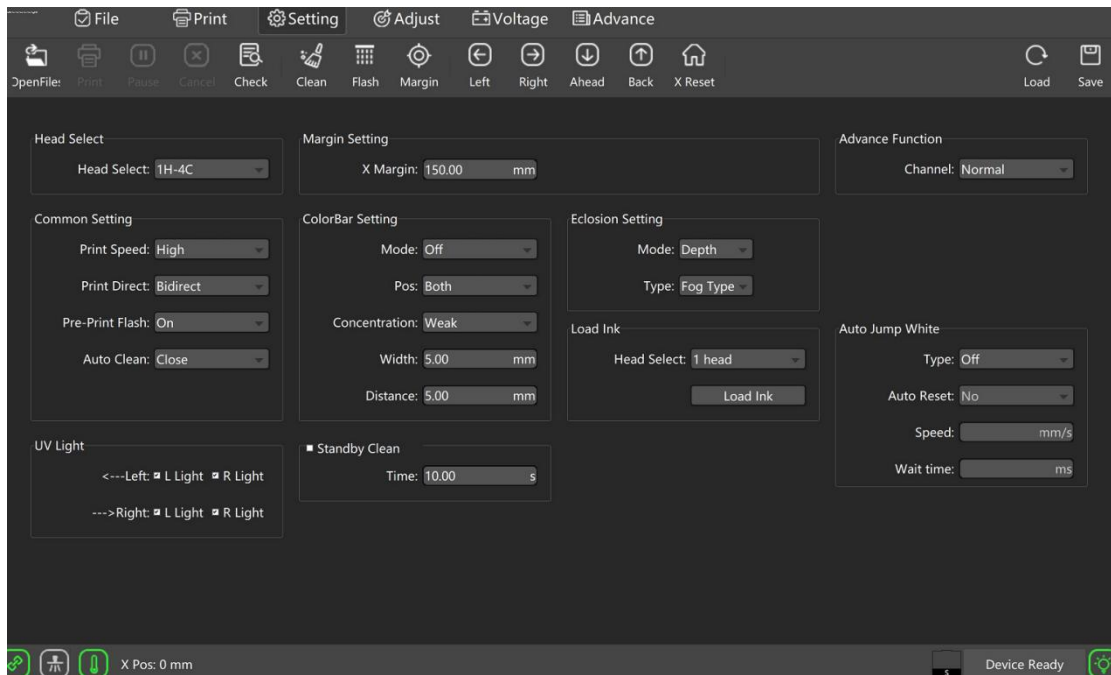
4.2 Open the software, after it turns green, then it means that it's connected successfully.



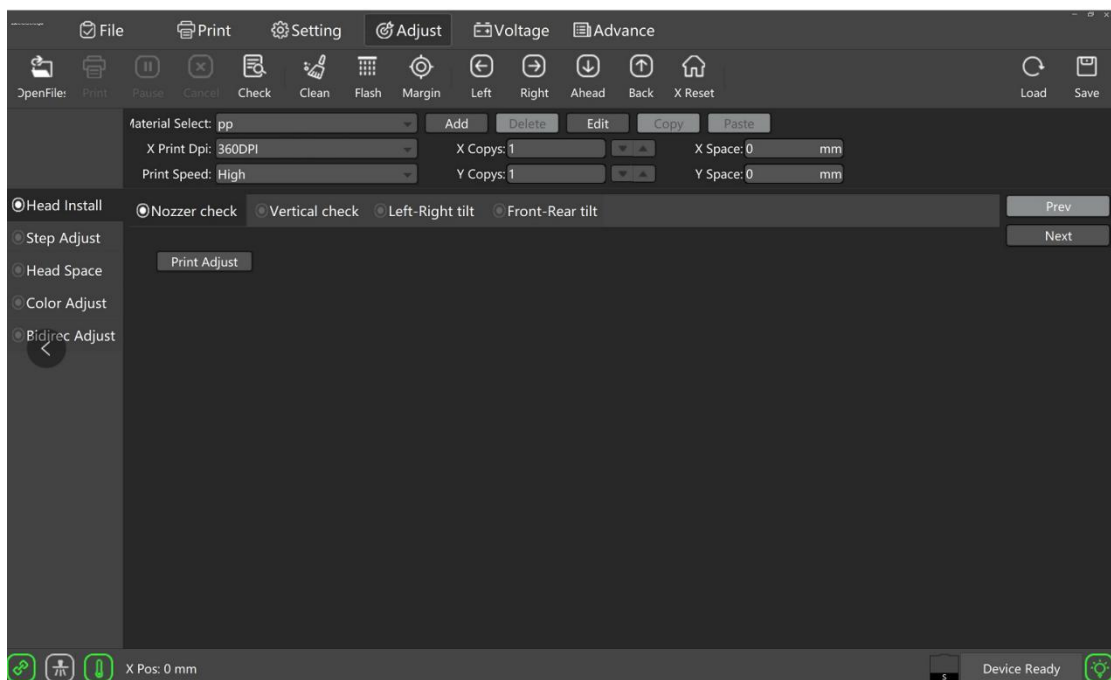
#### 4.3 Open file, add the file you want to print



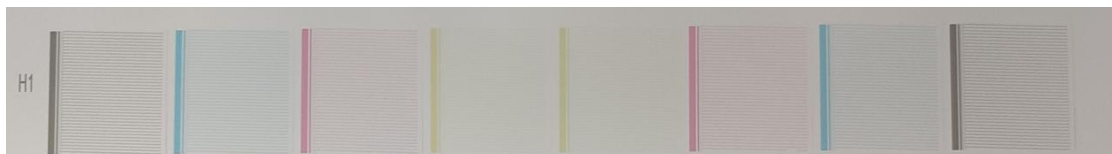
**Save** Set it according to your needs. Each time you change your setting, please press save.



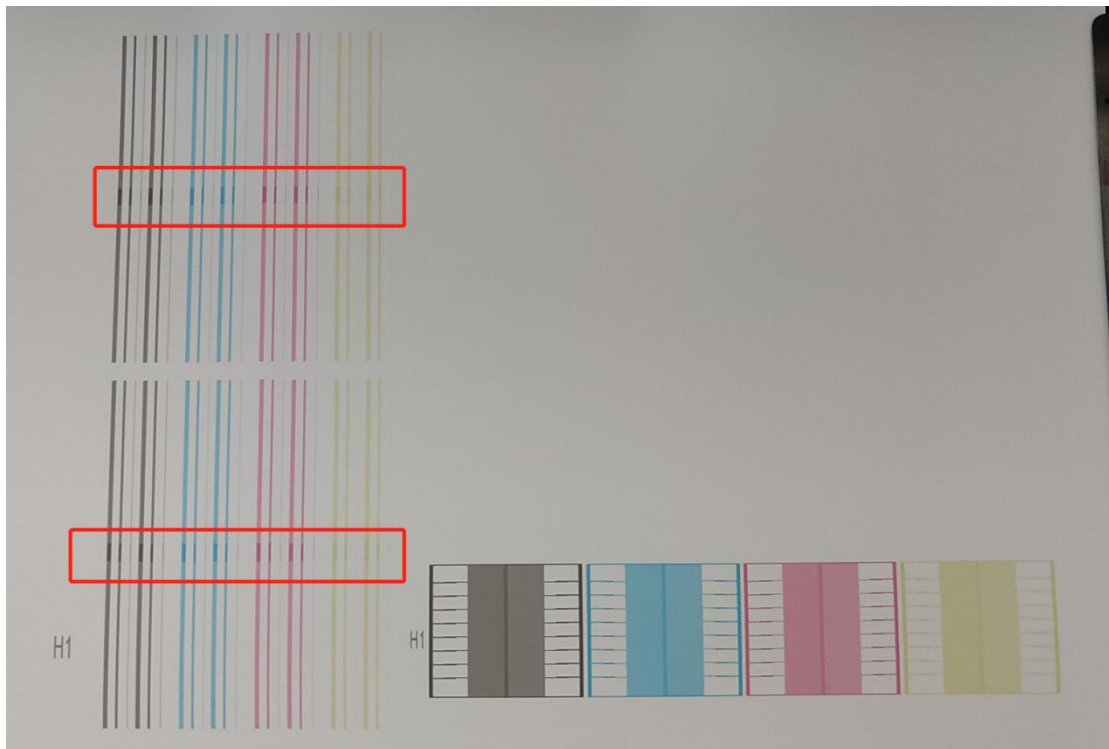
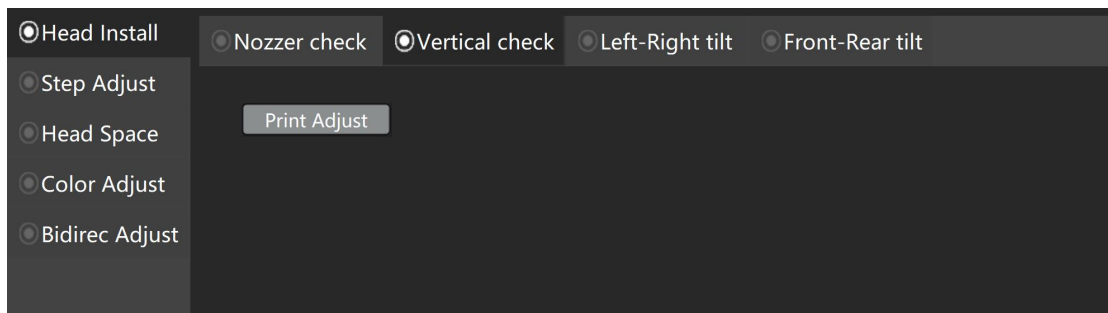
#### 4.4 Calibration: After you do all, then finish.



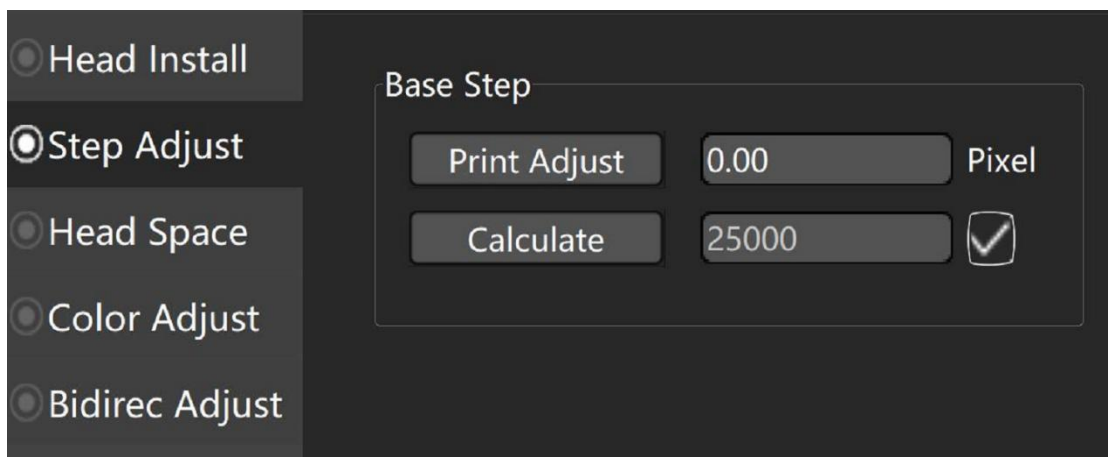
- ① **Head nozzle check** Please clean the head until all head nozzle are normal as below.

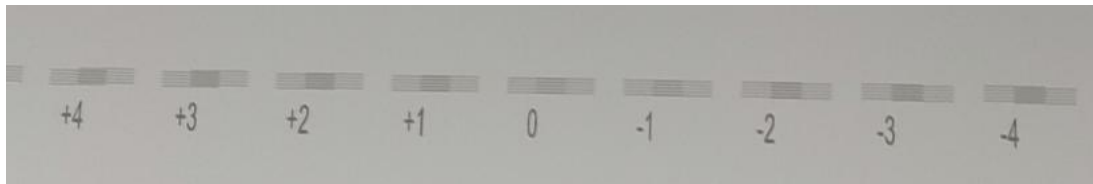


②**Vertical check** Adjust the angle to make sure that your head is vertical, and all alignment is good.

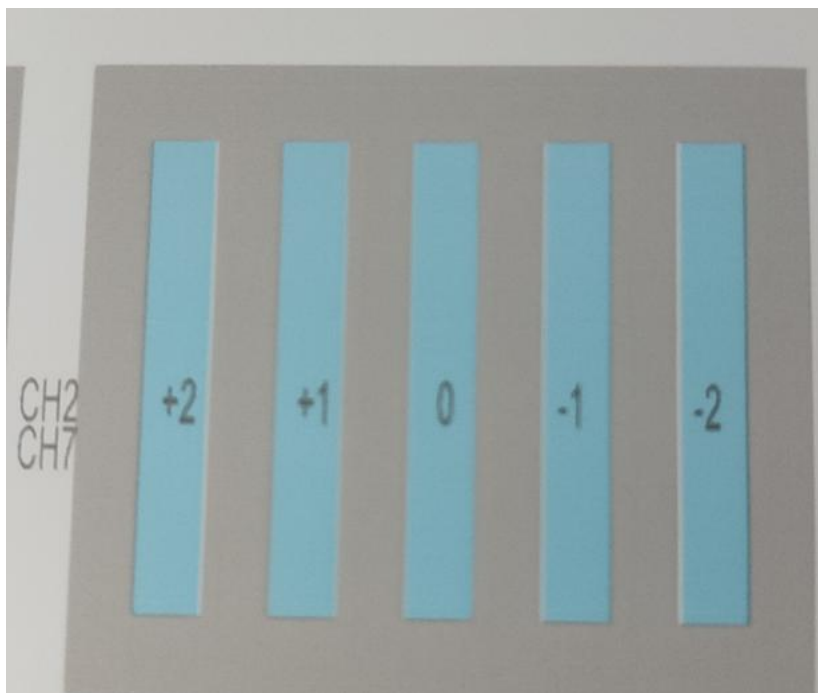
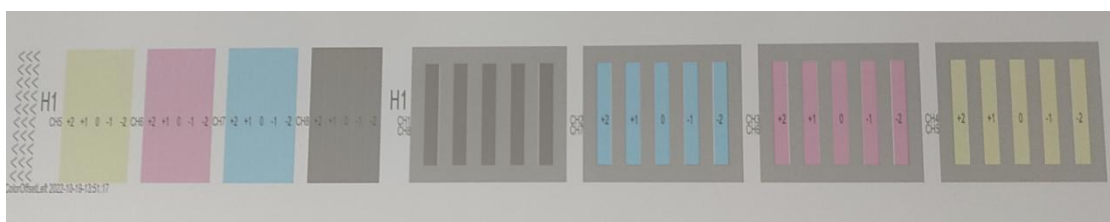
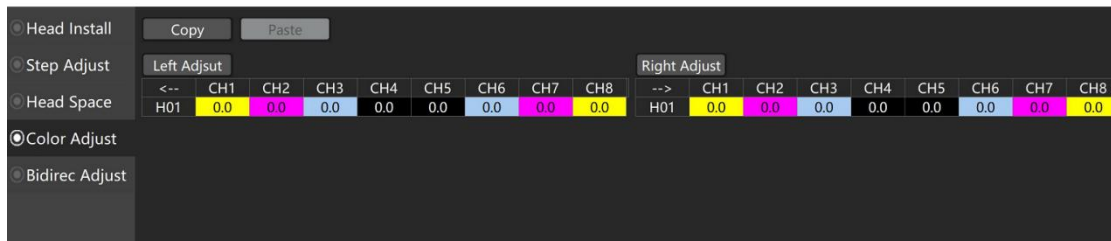


③**Step Adjust** Adjust the value according the calibration image you print. Make sure that 0 is coincided.



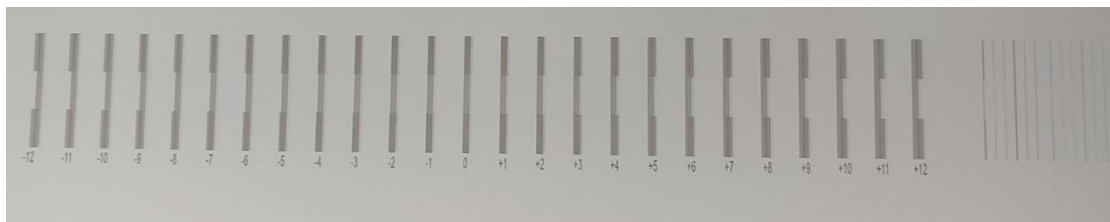
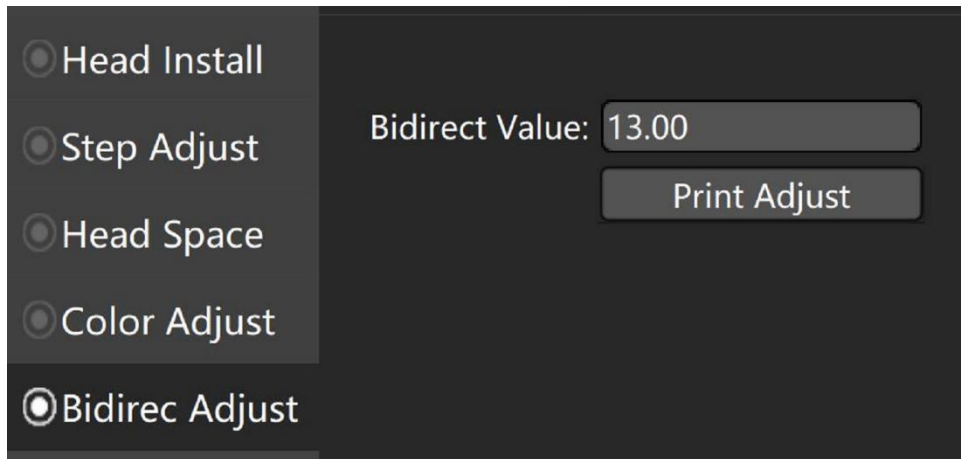


④ **Color calibration** Adjust the value according the calibration image you print. Make sure that 0 is coincided.

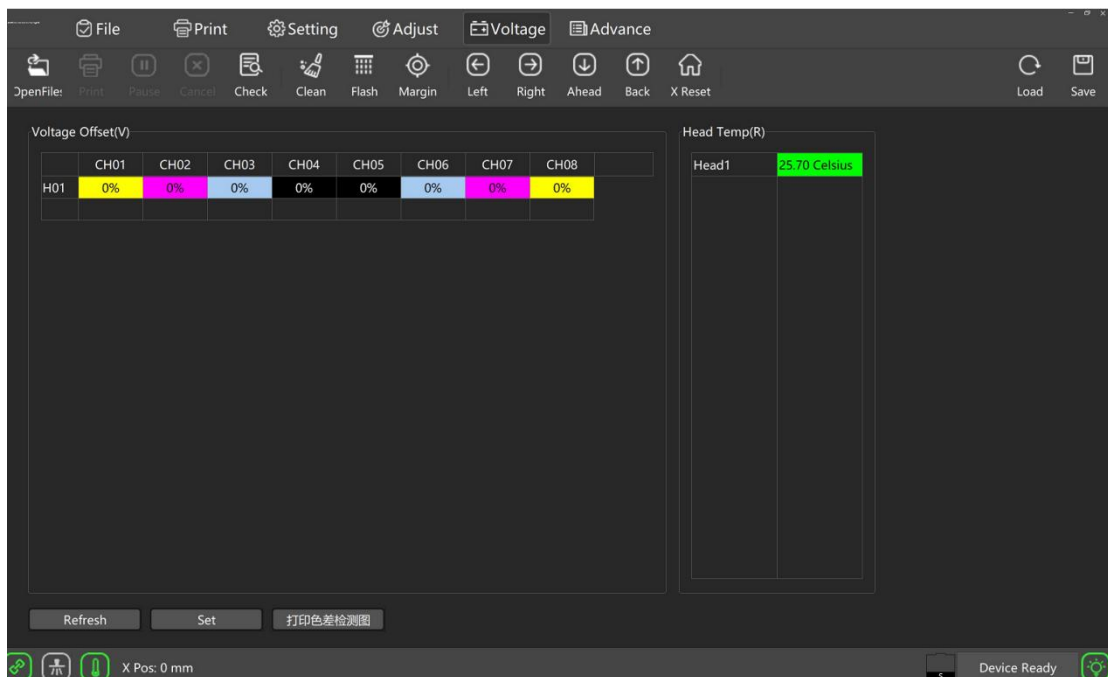


⑤ **Bidirectional calibration** Adjust the value according the calibration image you print. Make sure that 0 is fully coincided.

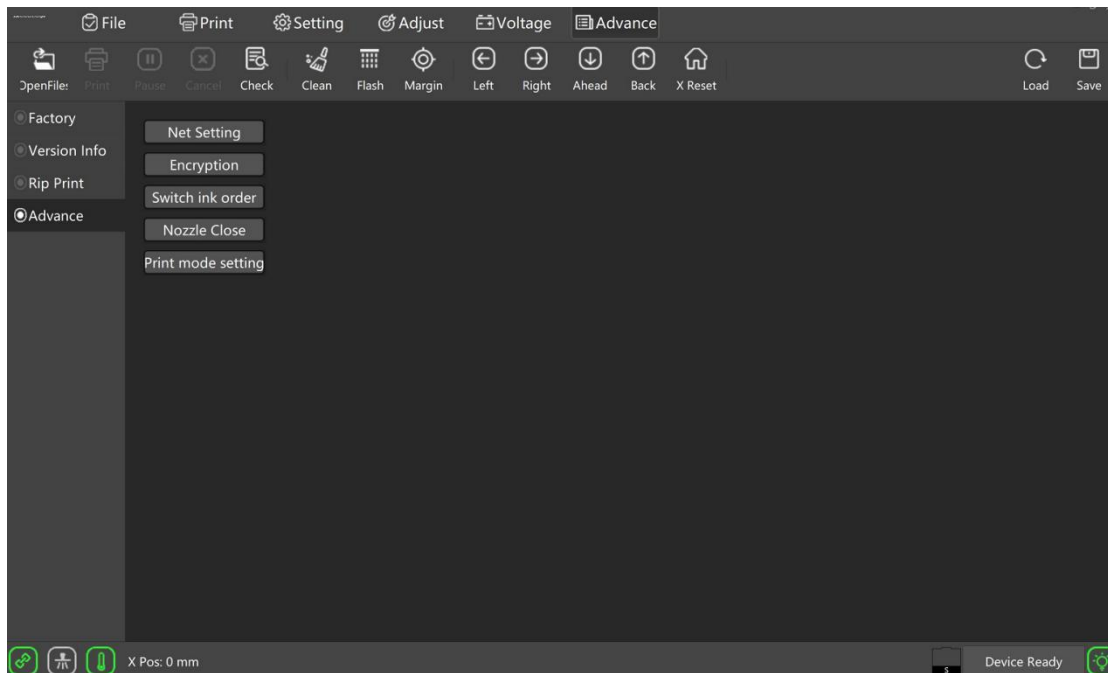




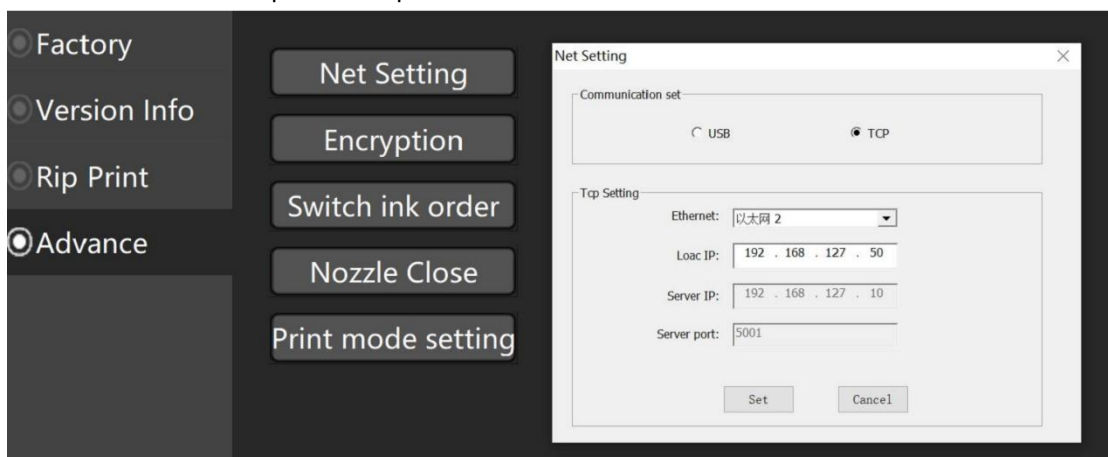
4.5 Voltage: Adjust the voltage according to your real needs.



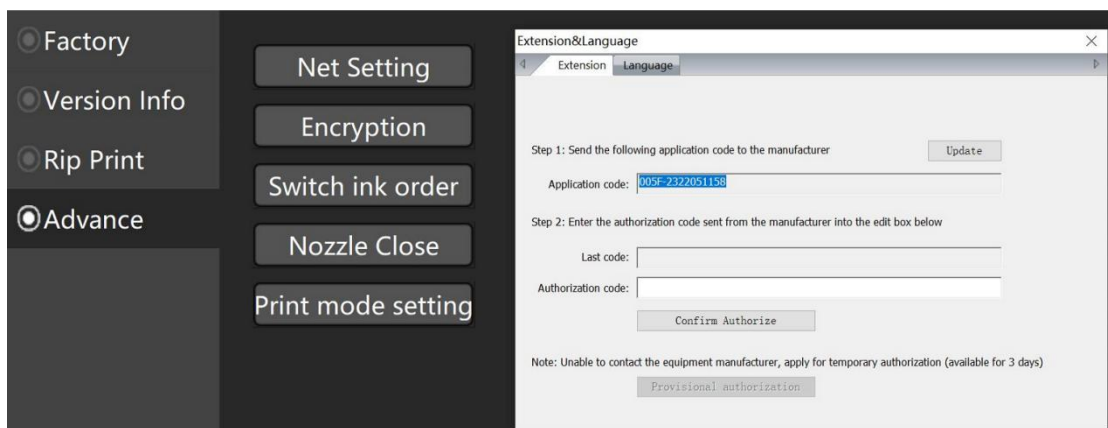
4.6 Advance setting



① Connect the computer with printer



② Encryption: installment password or change your language.



## 5.How to Install Photoprint

“PhotoPrint Installation manual” About how to install in details, please take a look at PhotoPrint Installation manual.

文件 > 出厂资料整理 > HS I3200 1H ECO

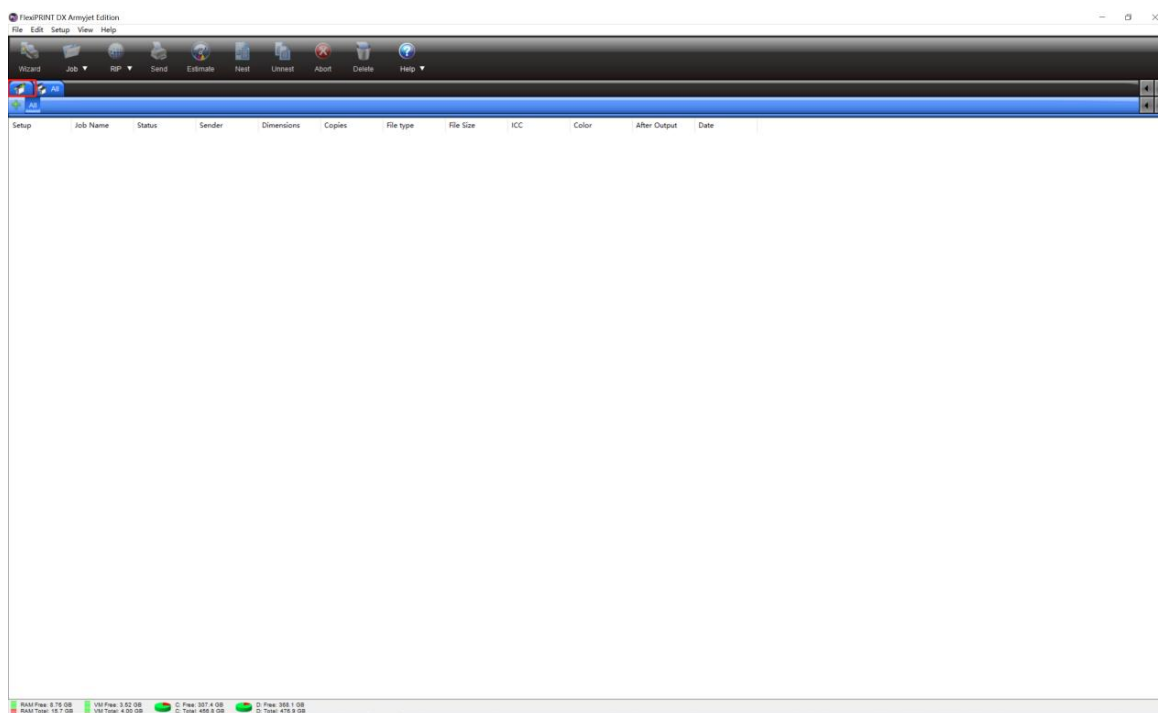
在 HS I3200 1H ECO 中搜索

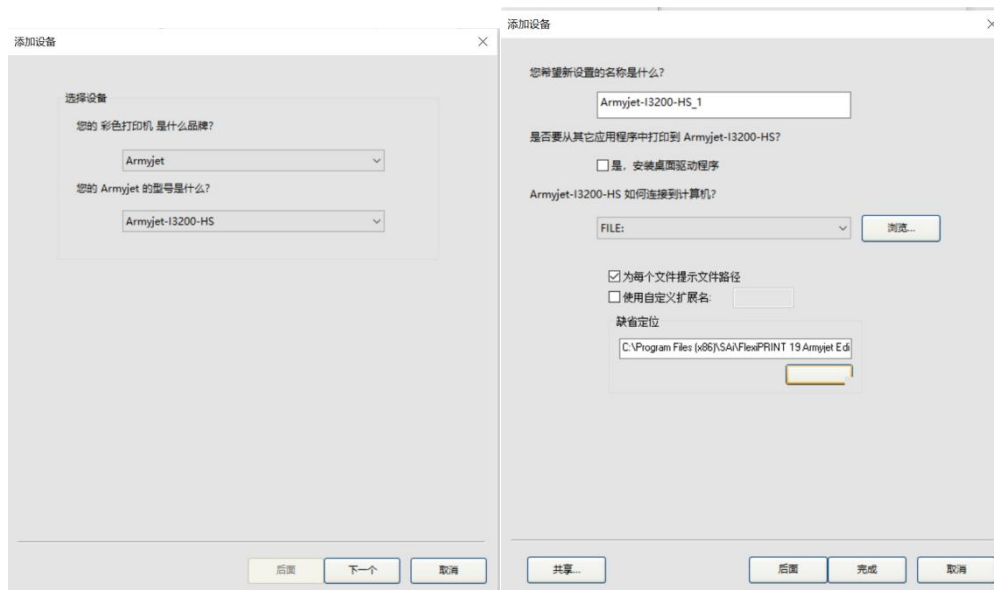
名称	修改日期	类型	大小
Firmware	2022/10/28 15:08	文件夹	
ICC Profile_photoprint	2022/10/17 15:39	文件夹	
PrintExp_V5.7.6.5.54.Single_20220810	2022/10/28 15:08	文件夹	
AJ-180i for new printer installation.pdf	2022/7/25 14:31	WPS PDF 文档	3,958 KB
PhotoPrint Installation manual.pdf	2022/4/7 15:11	WPS PDF 文档	8,017 KB
Win10 Setting before PM Installation.pdf.pdf	2022/4/7 14:46	WPS PDF 文档	1,392 KB

①Click this Icon to open photoprint software.

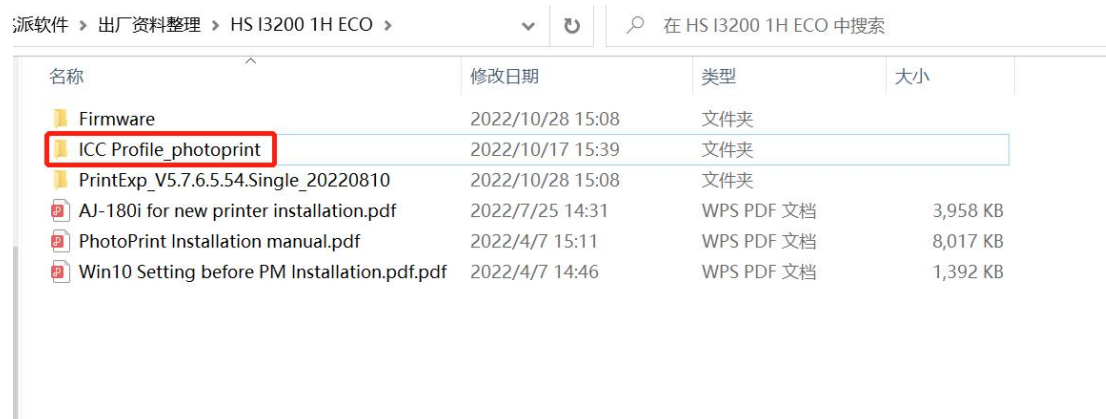


② Add printer. Do as below.

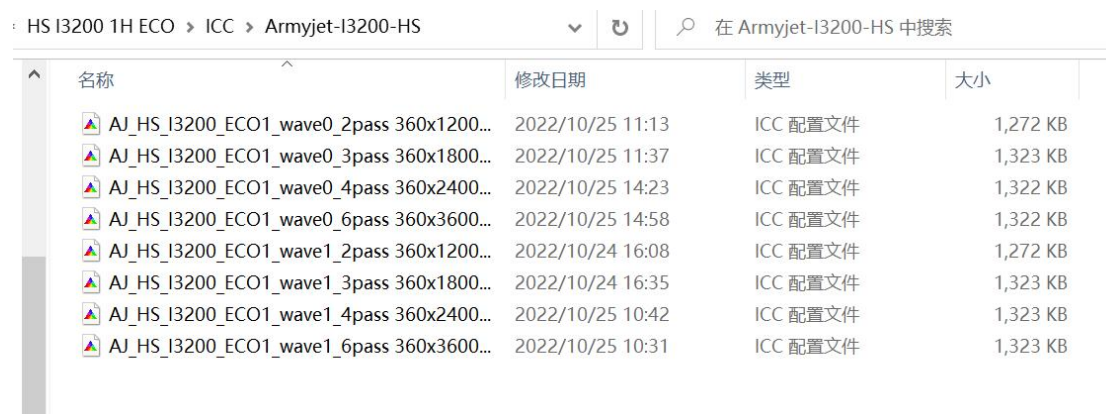




### ③ Open the **ICC Profile\_photoprint**



### ④ Copy all the files as below.

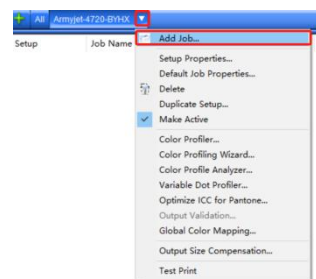


### ⑤ Open the file where you install photoprint and find ICC profile→Amyjet-I3200HS,

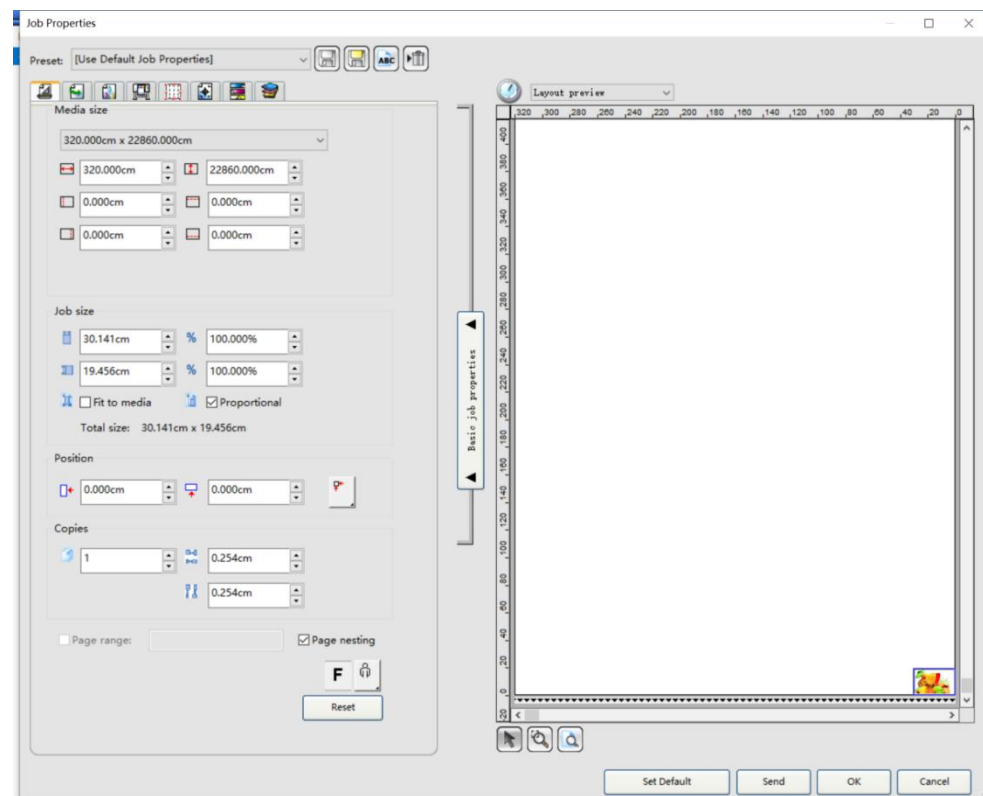
and the paste them here.

« ICCProfile > Armyjet-I3200-HS				在 Armyjet-I3200-HS 中搜索	
名称	修改日期	类型	大小		
AJ_HS_I3200_ECO1_wave0_2pass 360x1200...	2022/10/25 11:13	ICC 配置文件	1,272 KB		
AJ_HS_I3200_ECO1_wave0_3pass 360x1800...	2022/10/25 11:37	ICC 配置文件	1,323 KB		
AJ_HS_I3200_ECO1_wave0_4pass 360x2400...	2022/10/25 14:23	ICC 配置文件	1,322 KB		
AJ_HS_I3200_ECO1_wave0_6pass 360x3600...	2022/10/25 14:58	ICC 配置文件	1,322 KB		
AJ_HS_I3200_ECO1_wave1_2pass 360x1200...	2022/10/24 16:08	ICC 配置文件	1,272 KB		
AJ_HS_I3200_ECO1_wave1_3pass 360x1800...	2022/10/24 16:35	ICC 配置文件	1,323 KB		
AJ_HS_I3200_ECO1_wave1_4pass 360x2400...	2022/10/25 10:42	ICC 配置文件	1,323 KB		
AJ_HS_I3200_ECO1_wave1_6pass 360x3600...	2022/10/25 10:31	ICC 配置文件	1,323 KB		

## ⑥ Add Job

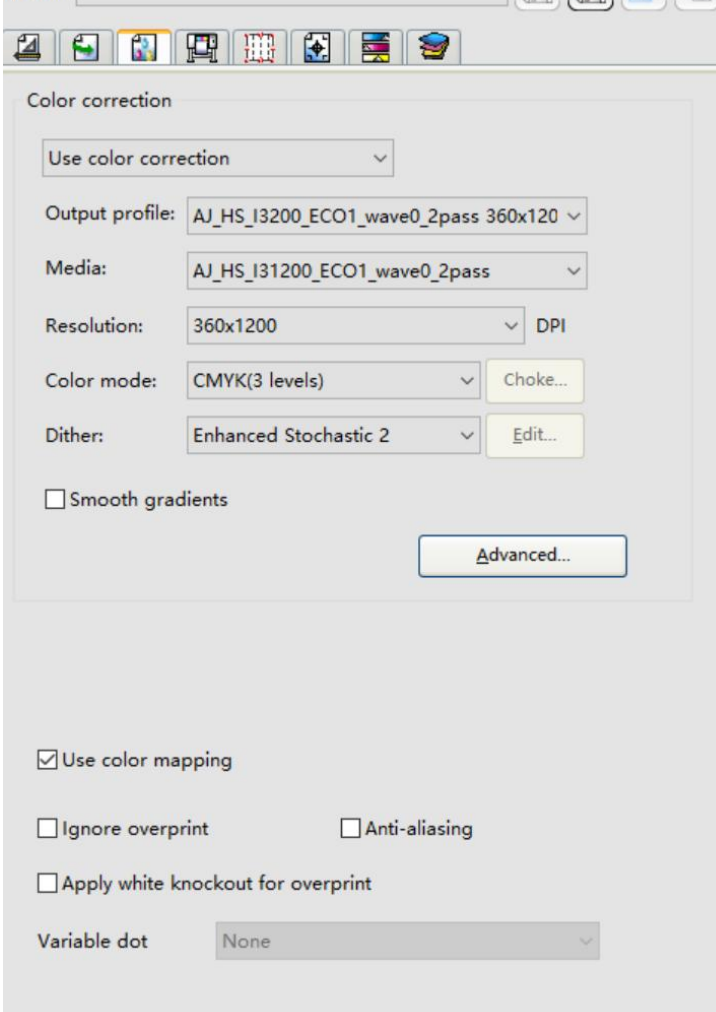


Edit the image



Choose output profile and then click Send.

Preset: ABC

A screenshot of a software interface showing a 'Color correction' dialog box. The dialog has a title bar with a 'Preset' dropdown and several icons. The main area is titled 'Color correction' and contains several settings. At the top is a 'Use color correction' dropdown. Below it are four rows of settings, each with a label, a dropdown menu, and a button. The first row is 'Output profile' with the value 'AJ\_HS\_I3200\_ECO1\_wave0\_2pass 360x120' and a 'v' icon. The second row is 'Media' with the value 'AJ\_HS\_I31200\_ECO1\_wave0\_2pass' and a 'v' icon. The third row is 'Resolution' with the value '360x1200' and a 'v' icon, followed by the text 'DPI'. The fourth row is 'Color mode' with the value 'CMYK(3 levels)' and a 'v' icon, followed by a 'Choke...' button. Below these is a 'Dither' dropdown with the value 'Enhanced Stochastic 2' and an 'Edit...' button. At the bottom of the dialog is a checkbox labeled 'Smooth gradients' which is unchecked. Below the dialog box, there are three more checkboxes: 'Use color mapping' (checked), 'Ignore overprint' (unchecked), and 'Anti-aliasing' (unchecked). Below these is a checkbox labeled 'Apply white knockout for overprint' which is unchecked. At the very bottom is a 'Variable dot' label followed by a dropdown menu showing 'None'.

Color correction

Use color correction ▼

Output profile: AJ\_HS\_I3200\_ECO1\_wave0\_2pass 360x120 ▼

Media: AJ\_HS\_I31200\_ECO1\_wave0\_2pass ▼

Resolution: 360x1200 ▼ DPI

Color mode: CMYK(3 levels) ▼ Choke...

Dither: Enhanced Stochastic 2 ▼ Edit...

☐ Smooth gradients

Advanced...

☒ Use color mapping

☐ Ignore overprint ☐ Anti-aliasing

☐ Apply white knockout for overprint

Variable dot None ▼

