

+



# ARMYJET

AJ-3002i16T

Armyjet Manual for new printer installation

## Warning

This manual is only suitable for Armyjet printers. If you install other non-Armyjet printers and face problems, Armyjet will not take responsibility. Armyjet owns the full copyright of this manual.

Armyjet will update its printers each year. So there may have some differences from the real printers.

# 1 Notes about installation

## 1.1 Installation environment

- Be sure that there is enough space
- Good environment: Temperature within 20-30°C, moisture within 40-60%
- Far away from sunshine, strong light and fire
- No dust.

## 1.2 Cautions

- Armyjet Power cable can only be used on Armyjet printers. Original power cable is more stable.
- The printer should be connected to outlet with earth wires.
- Power should meet local requirements.
- Don't use damaged wires
- Earth wire should be installed correctly.

## 1.3 Cautions in operation

- After power on, don't touch head and head cable
- If you need to move printer or replace any parts like head or head cable, please power it off first.
- Clean or do maintenance on the printer, please power off the printer first.
- Never pour off waste ink into natural waters or something like it.
- Once you open the ink bottle, please use it as soon as possible. It's bad for printing quality after you open the ink bottle for a long time and don't use it.
- Don't knock or shake the ink bottle, it will spill out ink.
- Keep the printer clean. Dust or liquid will cause electric leakage.
- Don't use high pressure air rifle to clean the printer.

## 1.4 Personnel Security Guide

- Keep the ink out the reach of Children.
- Never drink ink. If you happen to swallow some ink, please see the doctor as soon as possible.
- If some ink spills out on your skin, please clean with lots of water and some soap immediately.
- If ink happens to enter your eyes, please clean it with clean water.
- Add or replace ink or something others related to ink, please wear glove, surgical mask, and protective eye shields.

## Part list



Item	Part name	Quantity	Standard
①	Screw M6X16	20	
	Screw M3X6	20	
②	Power cable	1	
③	Ink tube	1m	
④	PP19 MINI UV	1	
⑤	USB Flash Drive	1	
⑥	24V Origin Sensor	1	
⑦	Ink damper	2	
⑧	Connector	8	
⑨	Tools like Screwdrivers	1	
⑩	Syringe	1	
⑪	Head cable	10	

## 2、Printer installation

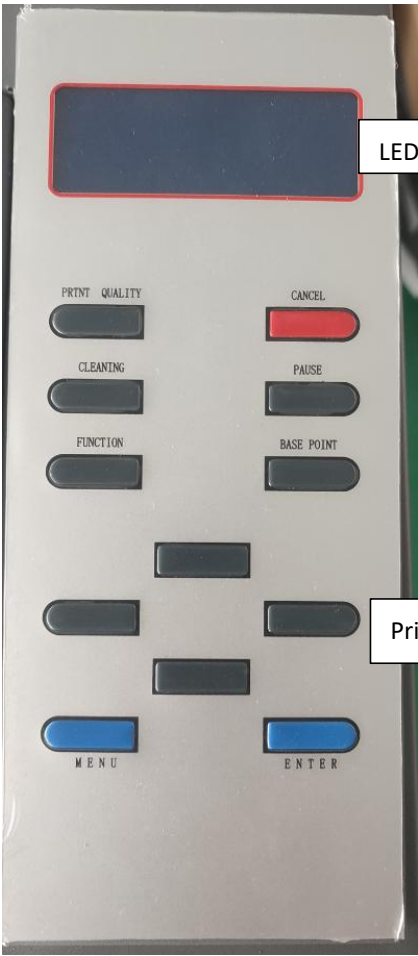


Front



Back

3.Function



LED Screen

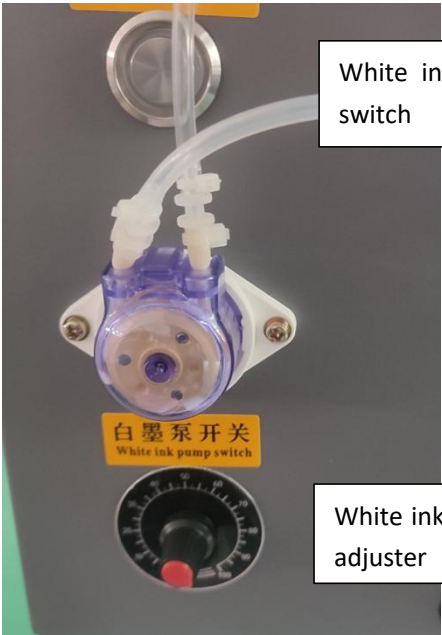
Printing Panel



Heating adjuster

Emergency Switch

Power Switch



White ink Circulation switch

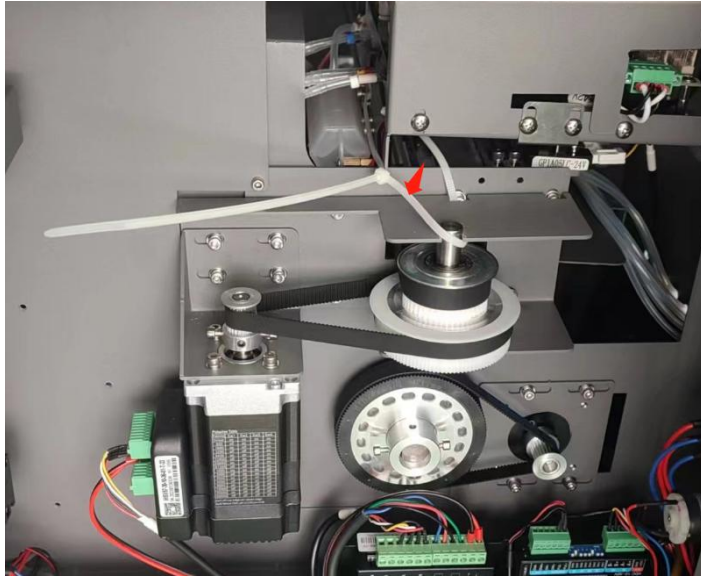
White ink circulation adjuster



White ink Stirring

#### 4. How to install printhead

(1) Remove these fixtures before power on



(2) After initialization, screen will show like below. And then test all functions from the panel and then power off the printer.



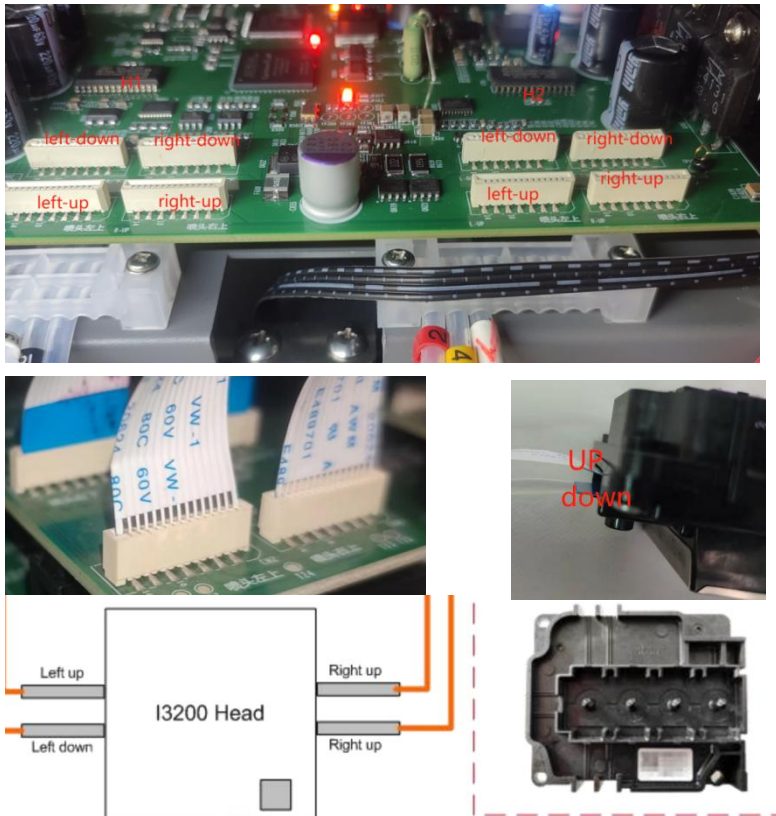
(3) Remove the carriage cover and head board cover





#### (4) Install Printhead

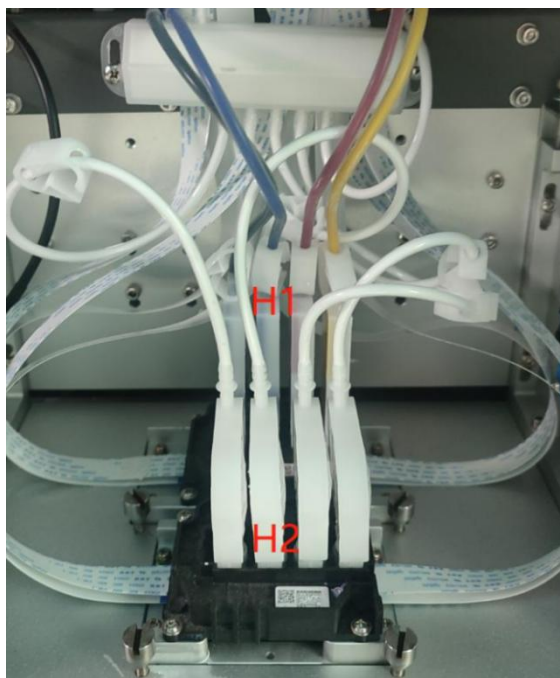
- ① Connect head cable like the image below.



Connect head cable carefully, or it will burn your head or head board.

- ②. Install head on head plate like below.

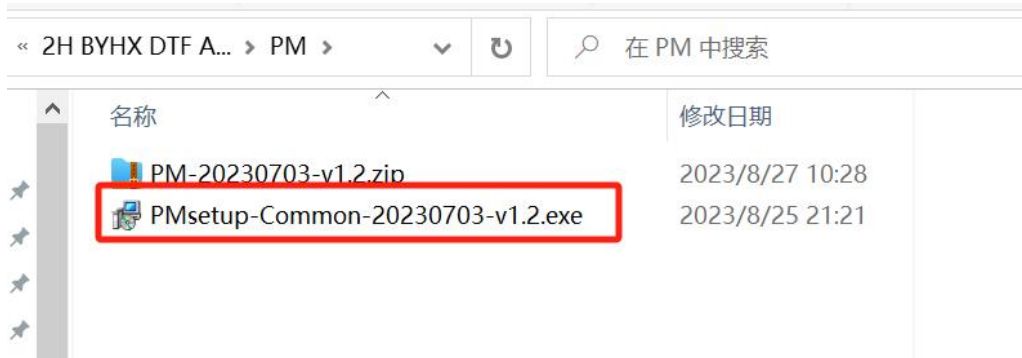
- ③. After power on, loading ink. Load ink from ink pump and press cancel. After cleaning, choose weak cleaning to make sure that all nozzles can print.



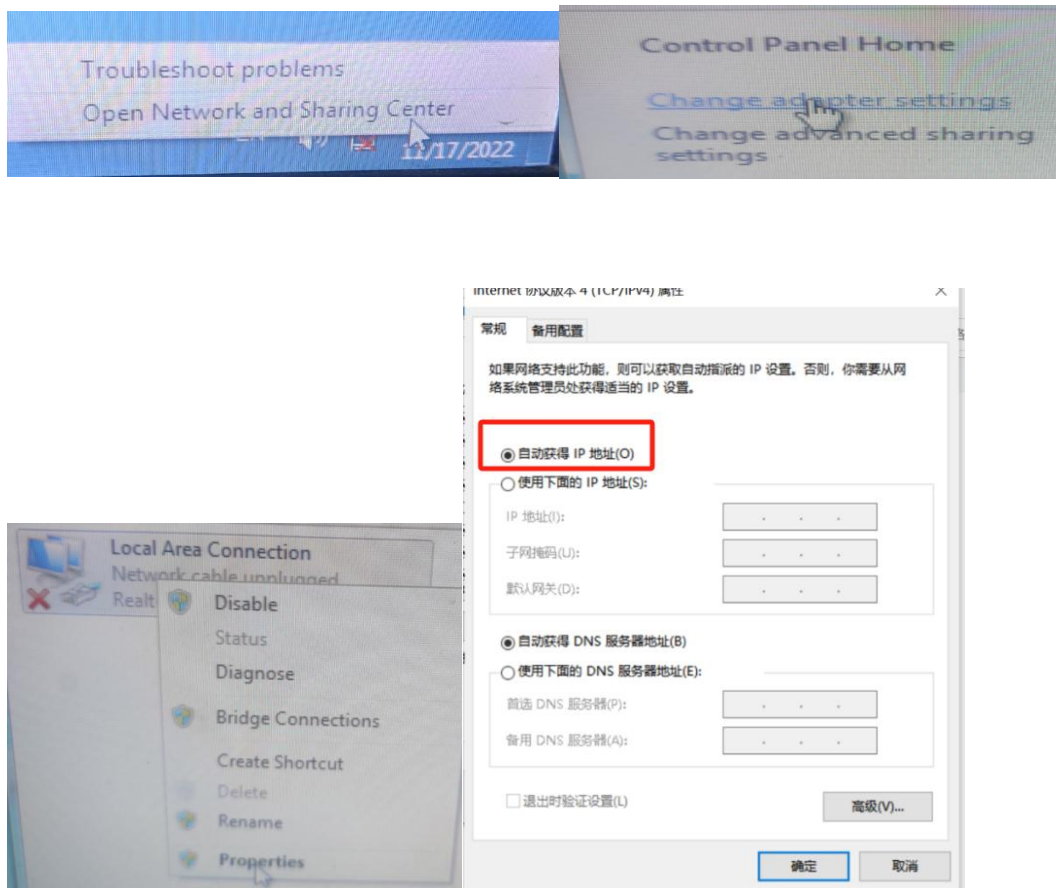


## 5.How to install software

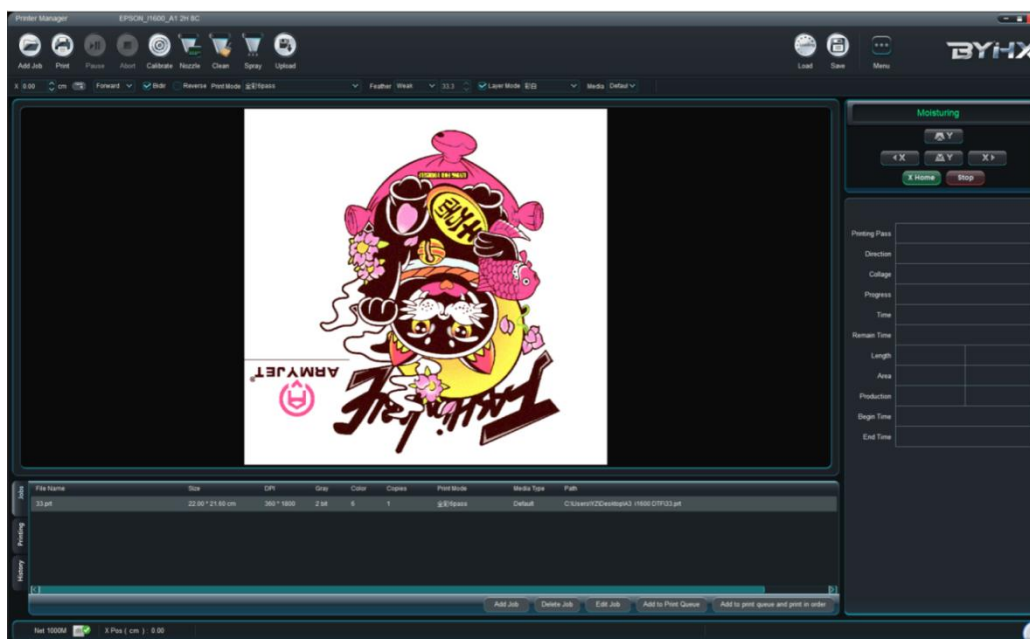
(1) Install the software PMsetup-Common-20230703-v1.2



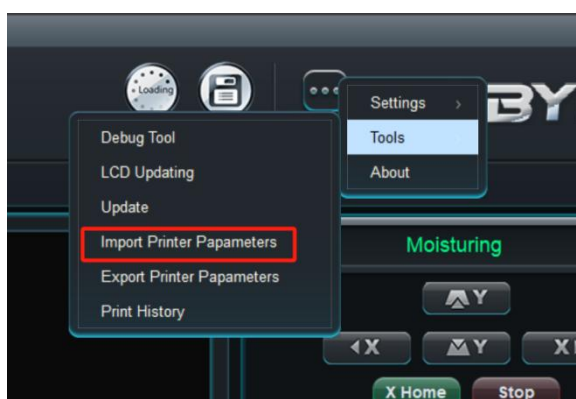
(2) Connection should be done like below



(3) Open the software like below

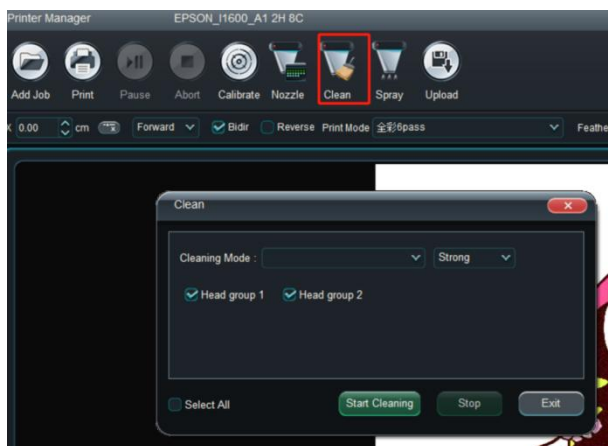


Note: For the first use, please import parameters like below.

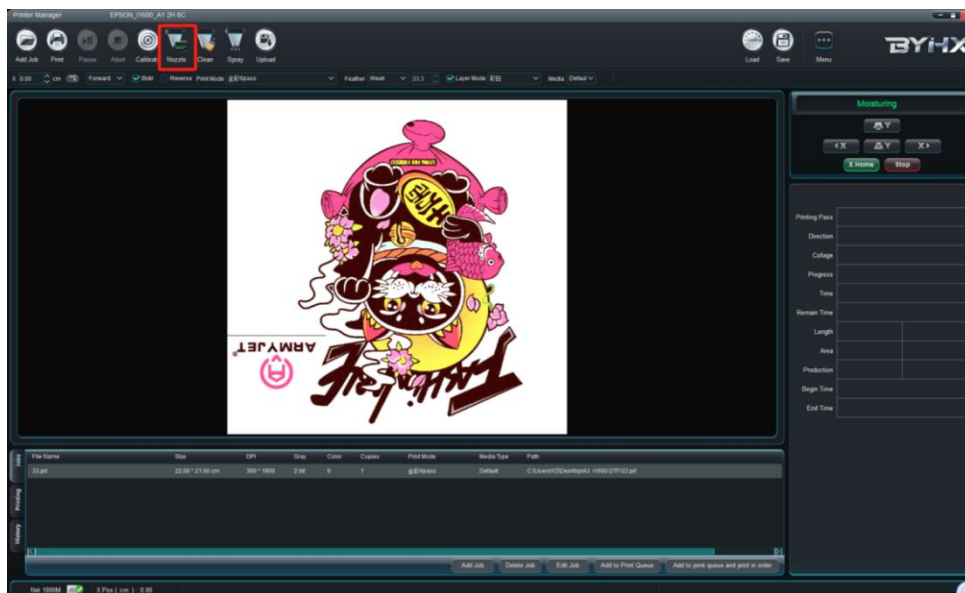


出厂... > 2H BYHX DTF... >	搜索"2H BYHX I
名称	修改日期
Firmware	2023/10/8
ICC Profile_photoprint	2023/10/8
PM	2023/10/8
Waveform	2023/10/8
33.prt	2023/8/27
canshu.txt	2023/8/25
i600 20230927 params.zip	2023/8/27

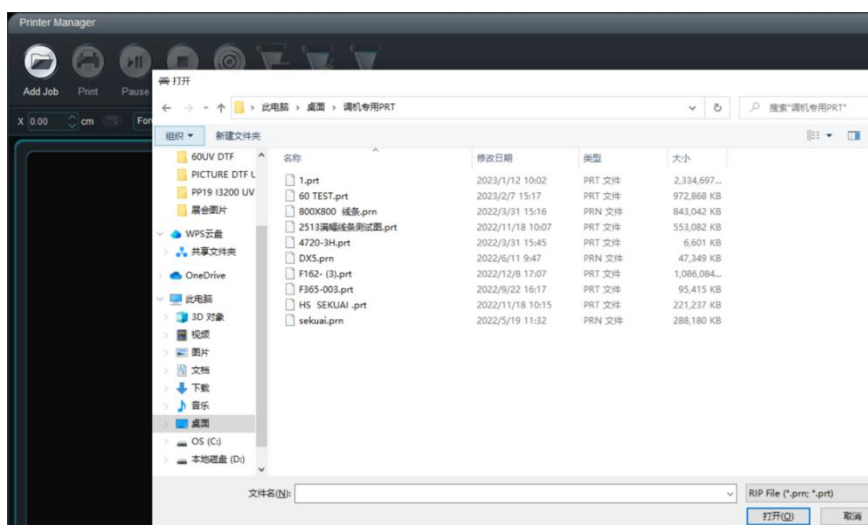
#### (4) Clean printhead

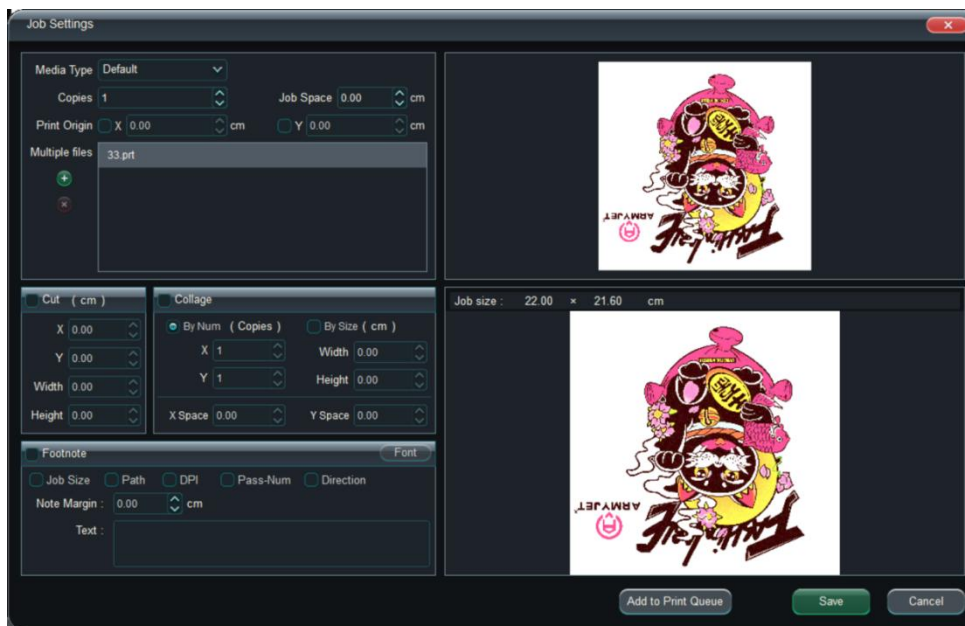


#### (5) Nozzle check,

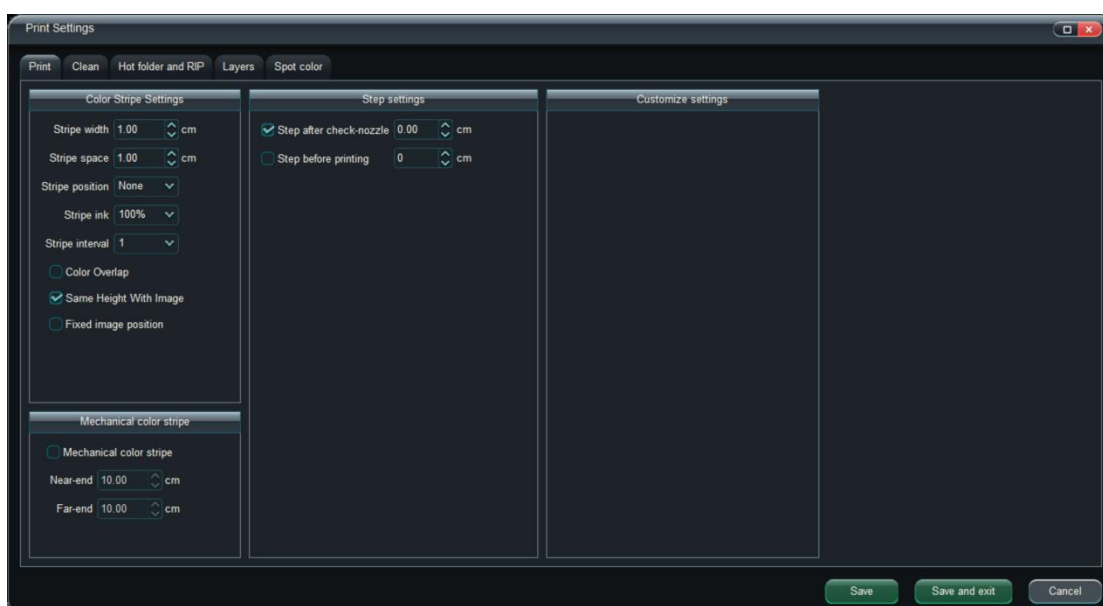
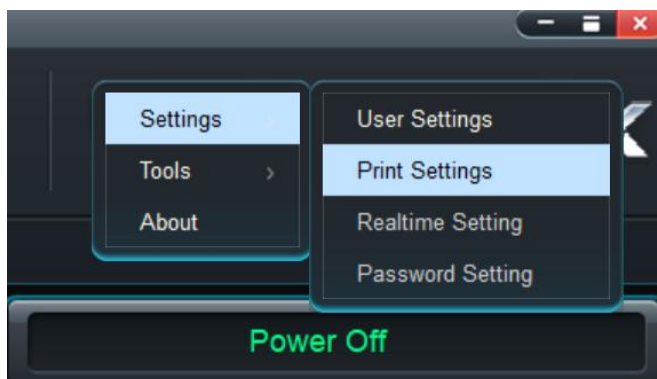


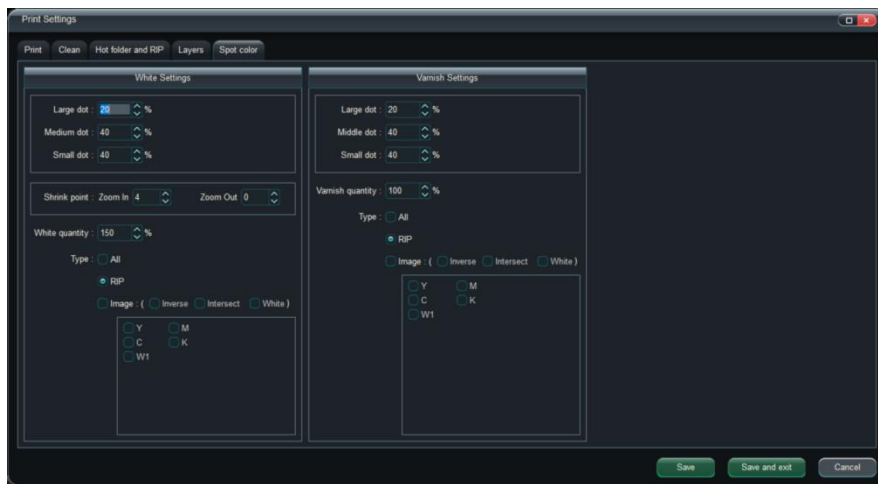
#### (6) Add and edit works



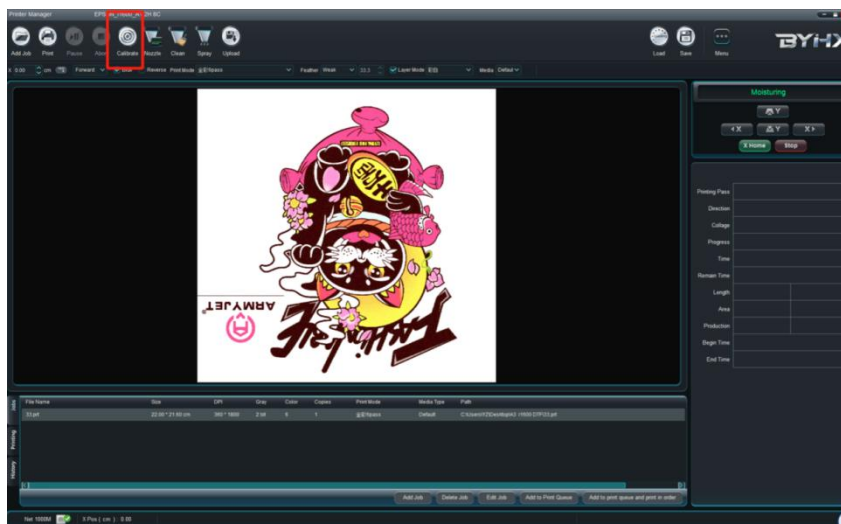


(7) Setting should be made according to your requirements

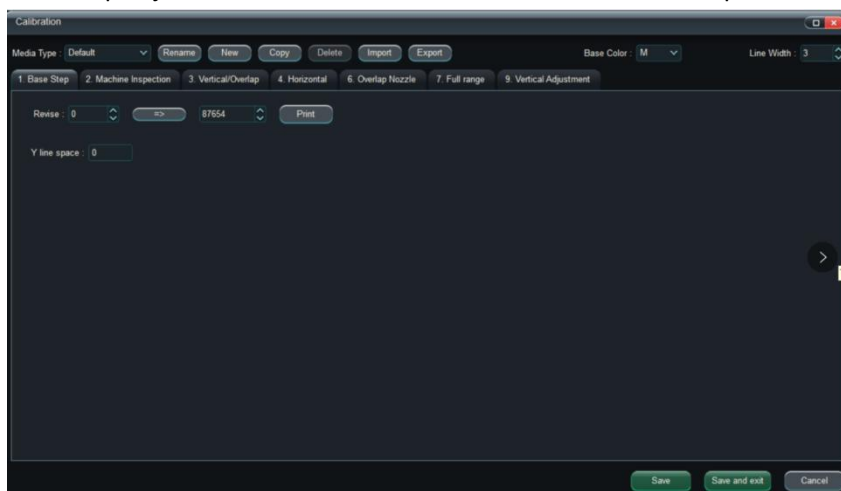




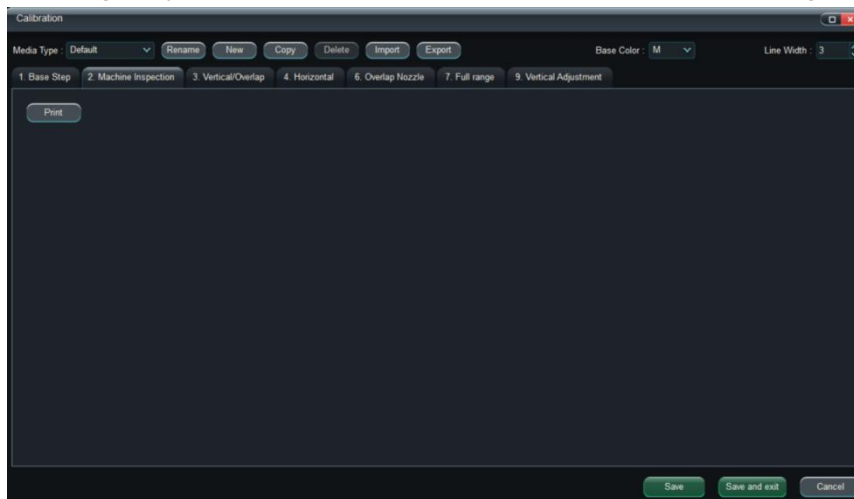
## (8) Calibration and finish calibration



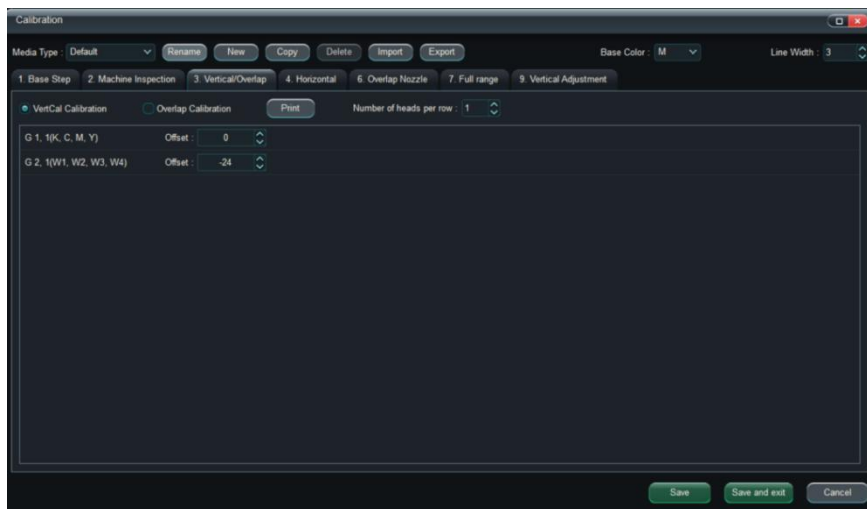
### ① Step adjustment      Make sure that all should be overlap on "0".



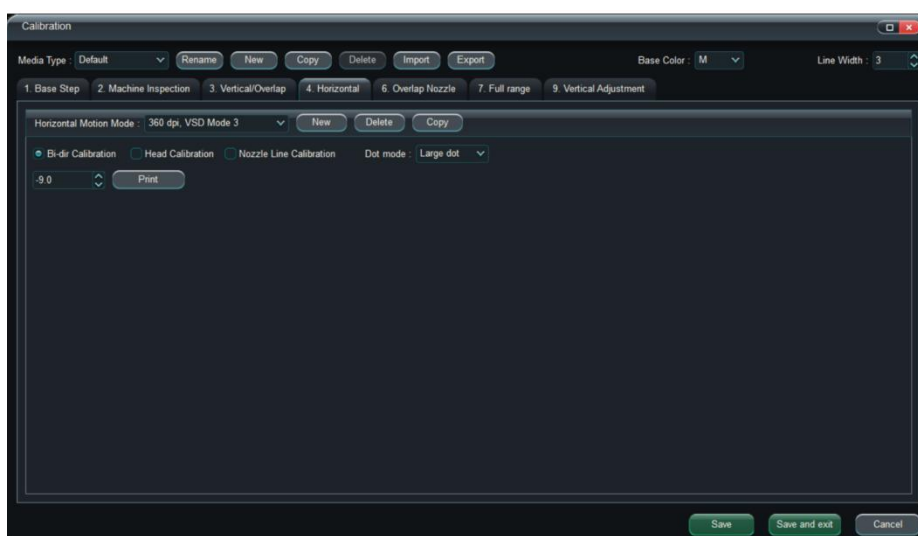
- ② Angle adjustment. Head should vertical, connection should be aligned fully.



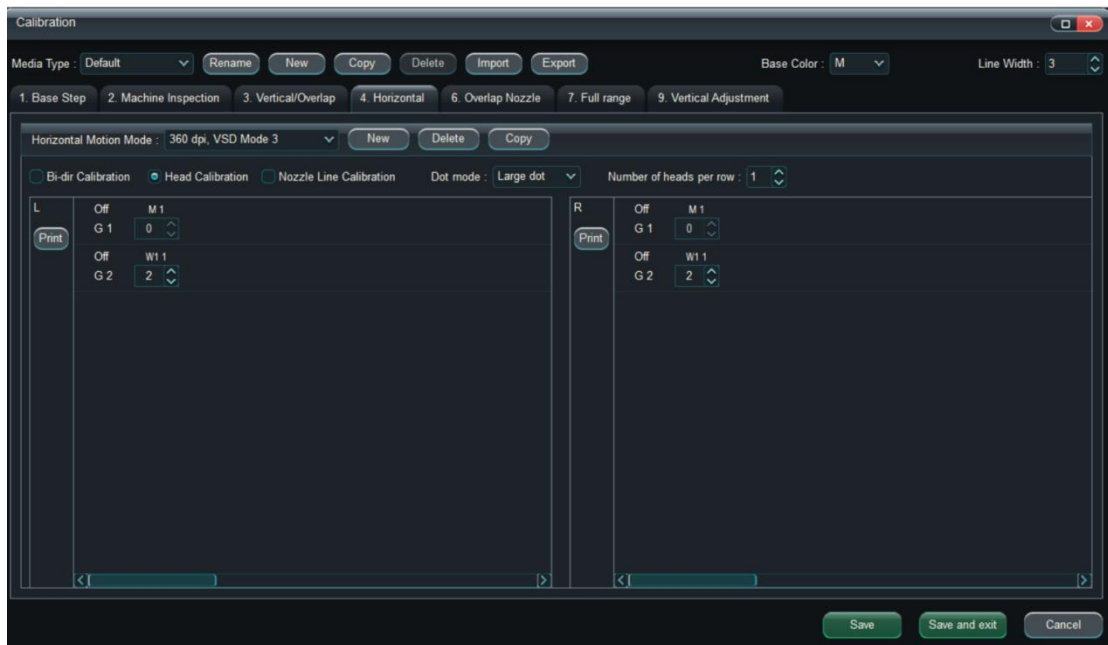
- ③ Y space, should be aligned with "0" fully.



- ④ Bidirectional adjustment, should be aligned with "0" fully.

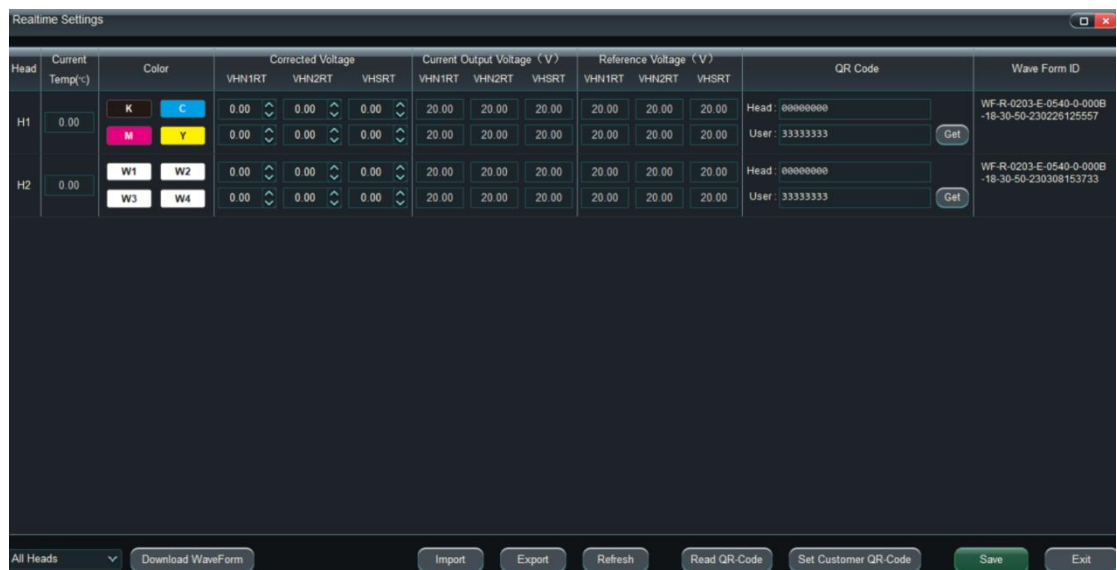
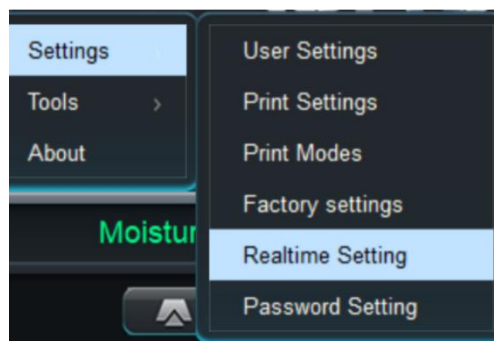


- ⑤ Left justifying and right justifying, should be aligned with “0” fully.



- (8) Other fuctions

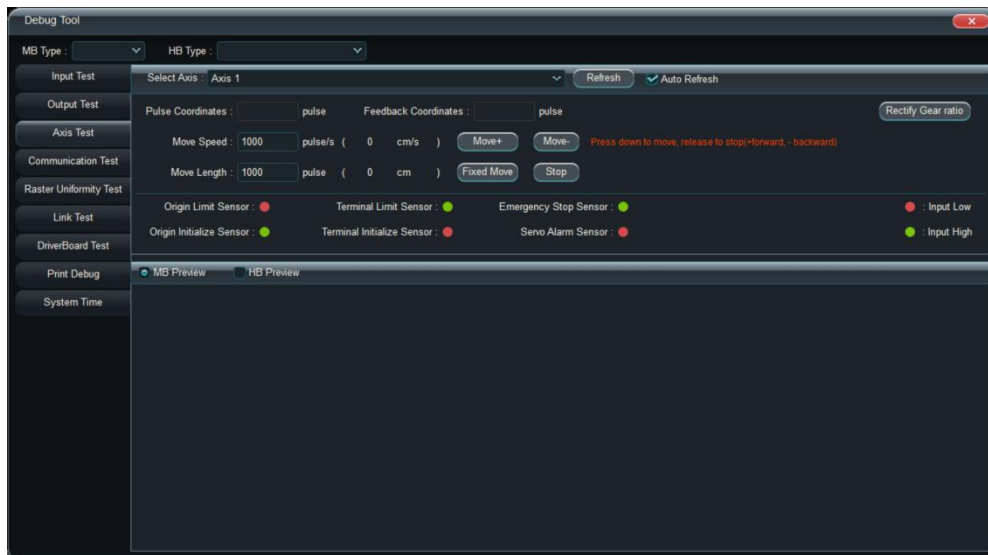
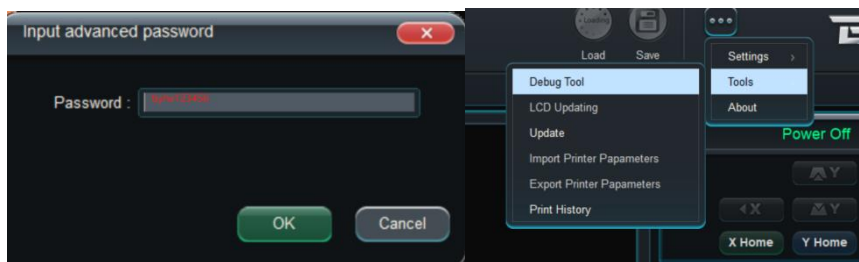
- ① Real-time setting(Adjust head voltage, update waveform)



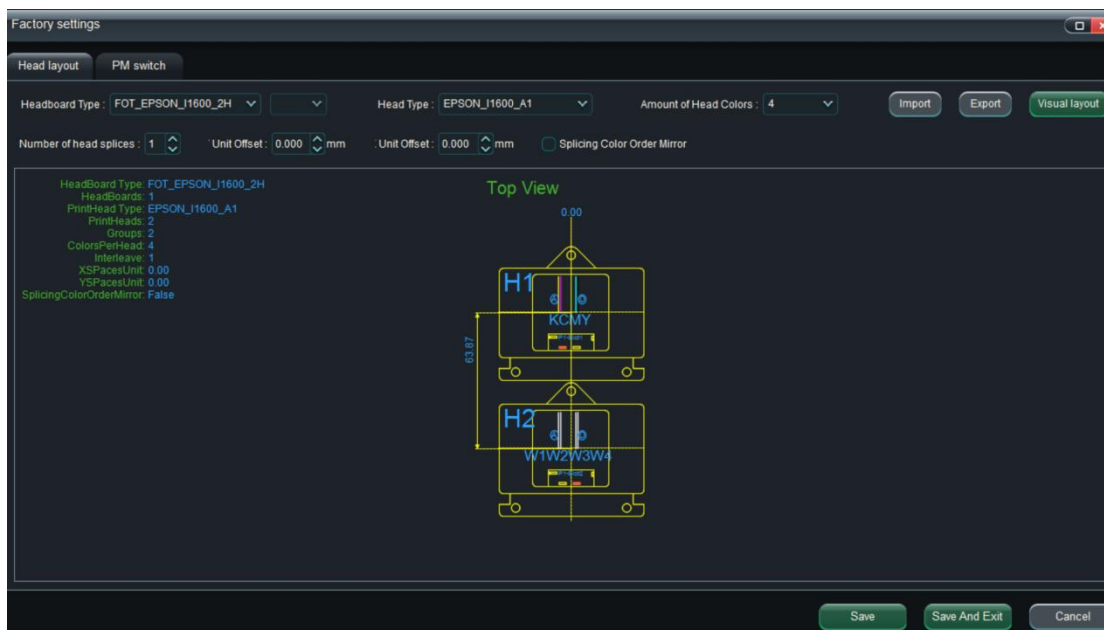
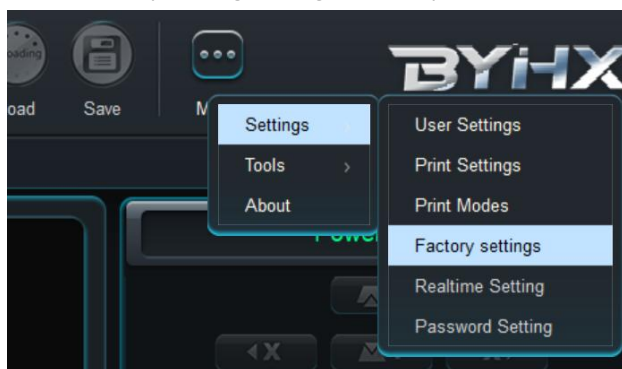


② ctrl+shift+G Enter advanced mode 密码 Password: byhx123456

(1) Adjusting tool: Check the enter signal and movement status.

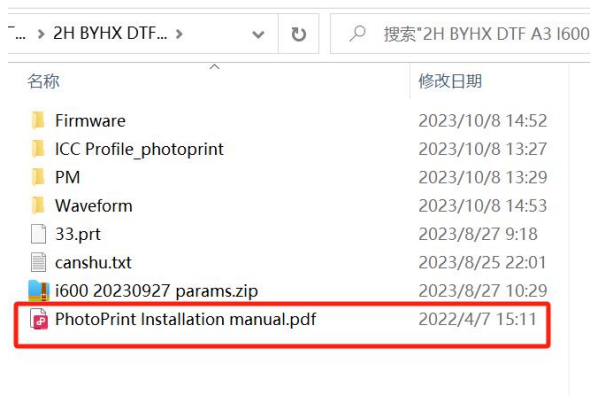


(2) Factory setting, change head layout



## 6.How to Install Photoprint

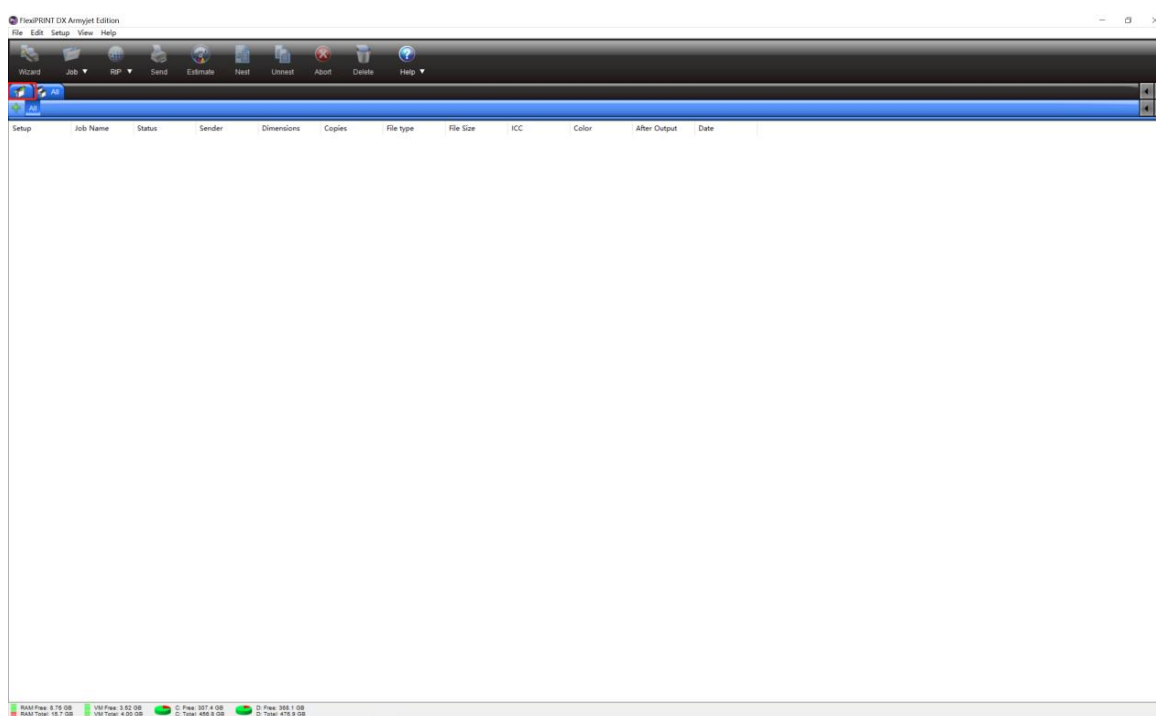
[“PhotoPrint Installation manual”](#) About how to install in details, please take a look  
at [PhotoPrint Installation manual](#).

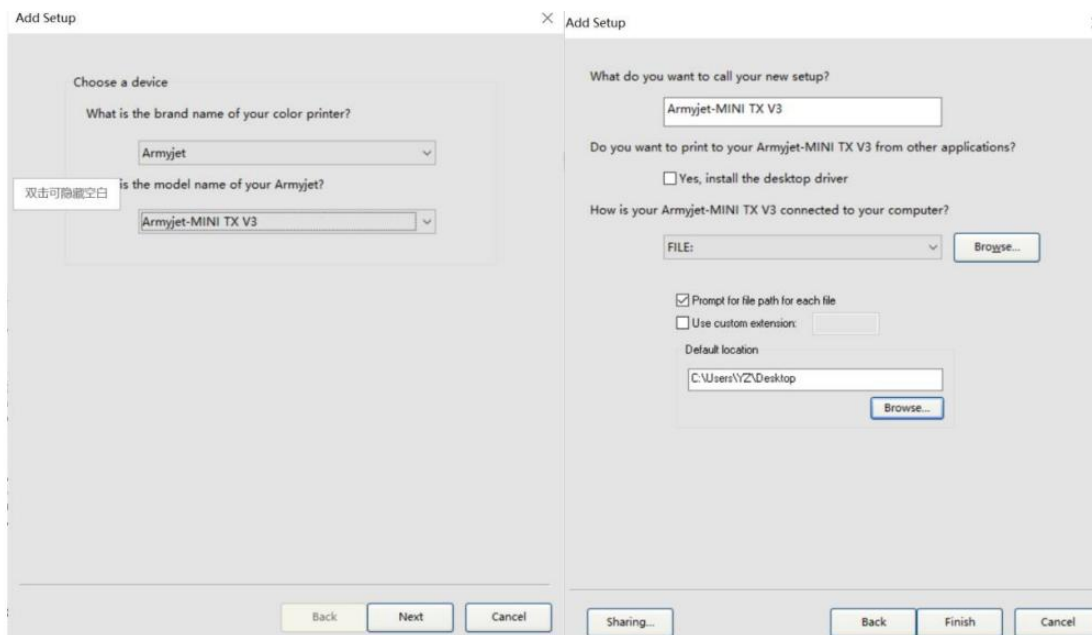


(1) Click this Icon to open photoprint software.

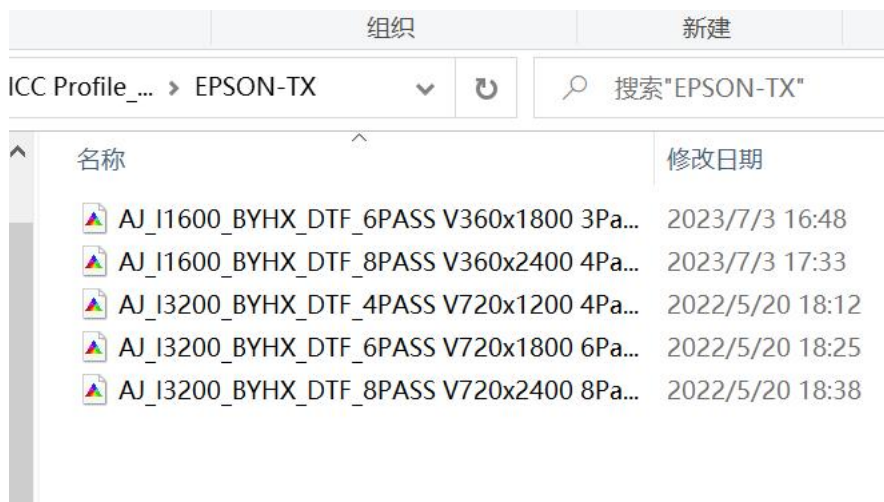
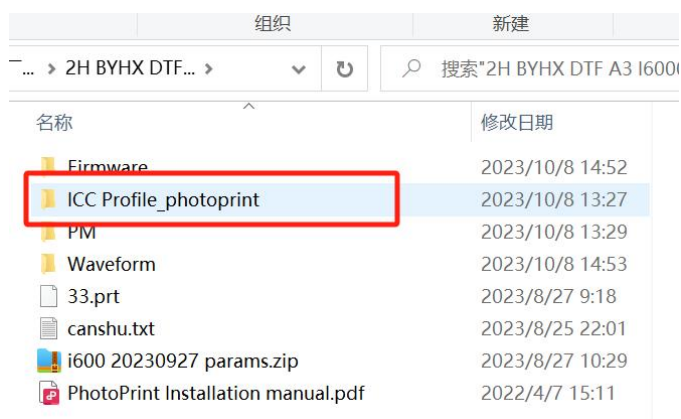


(2) Add printer. Do as below.





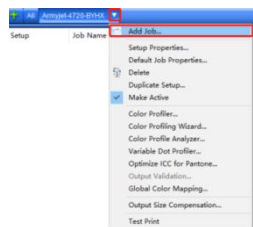
(3) Open the ICC Profile photoprint and Copy all the files as below.



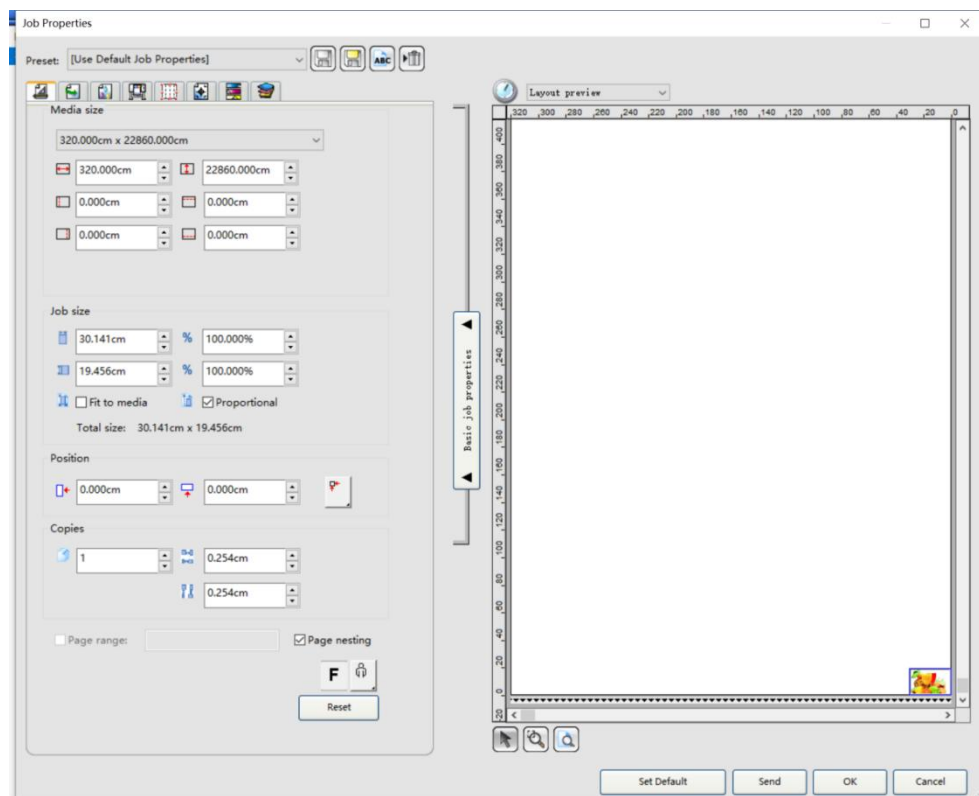
(4) Open the file where you install photoprint and find ICC profile→EPSON-TX,  
and the paste them here.

OS (C:) > Program Files (x86) > Sai > FlexiPRINT 19 Armyjet Edition > ICCProfile > EPSON-TX				
名称	修改日期	类型	大小	
AJ_I1600_BYHX_DTF_6PASS V360x1800 3Pa...	2023/7/3 16:48	ICC 配置文件	1,272 KB	
AJ_I1600_BYHX_DTF_8PASS V360x2400 4Pa...	2023/7/3 17:33	ICC 配置文件	1,272 KB	
AJ_I3200_BYHX_DTF_4PASS V720x1200 4Pa...	2022/5/20 18:12	ICC 配置文件	1,272 KB	
AJ_I3200_BYHX_DTF_6PASS V720x1800 6Pa...	2022/5/20 18:25	ICC 配置文件	1,272 KB	

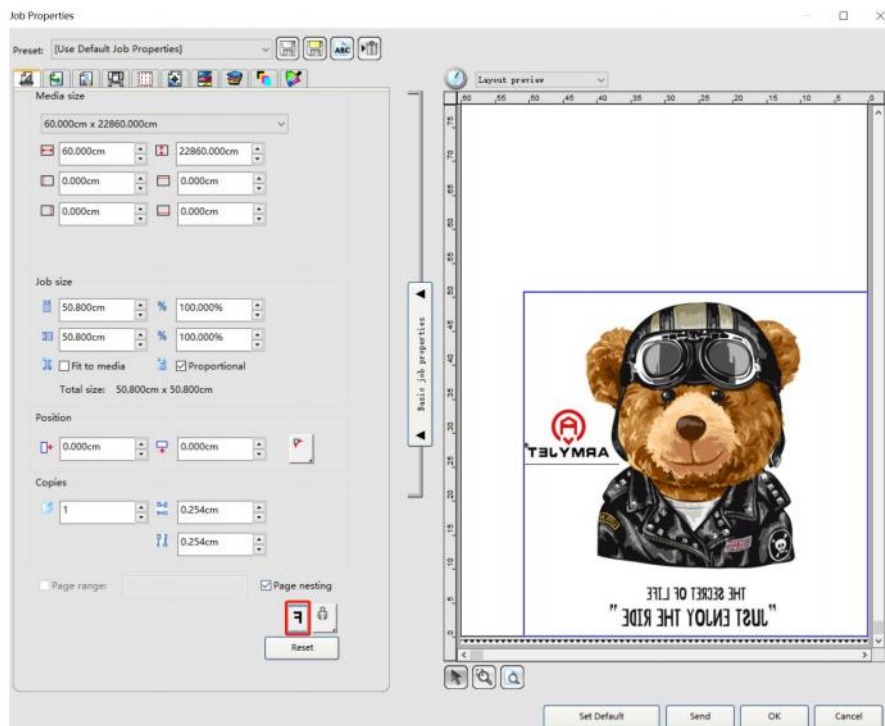
## (5) Add Job



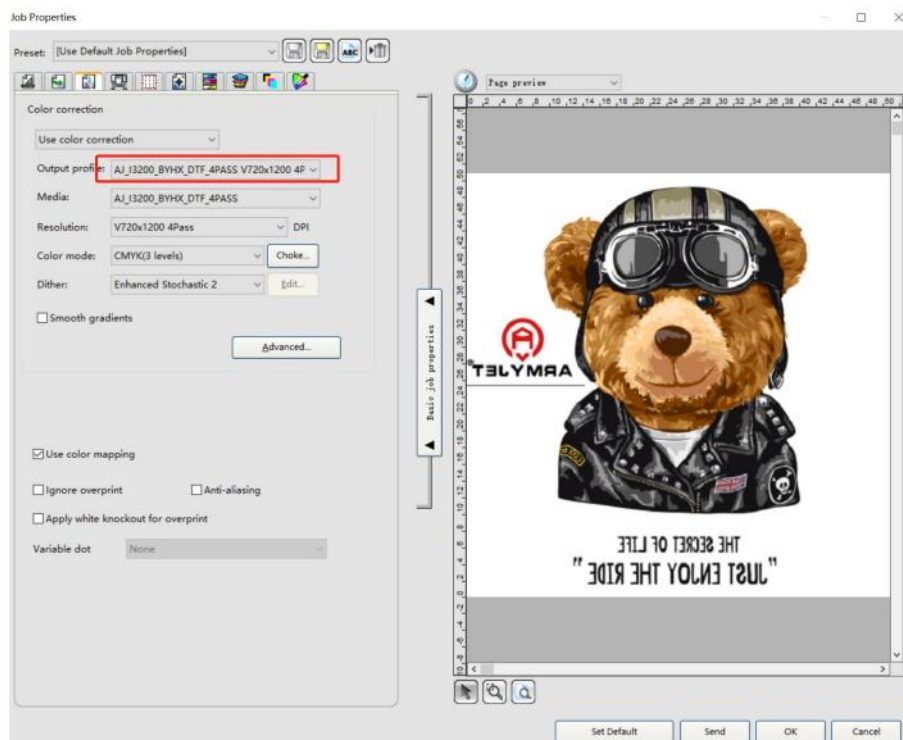
## ①Edit the image



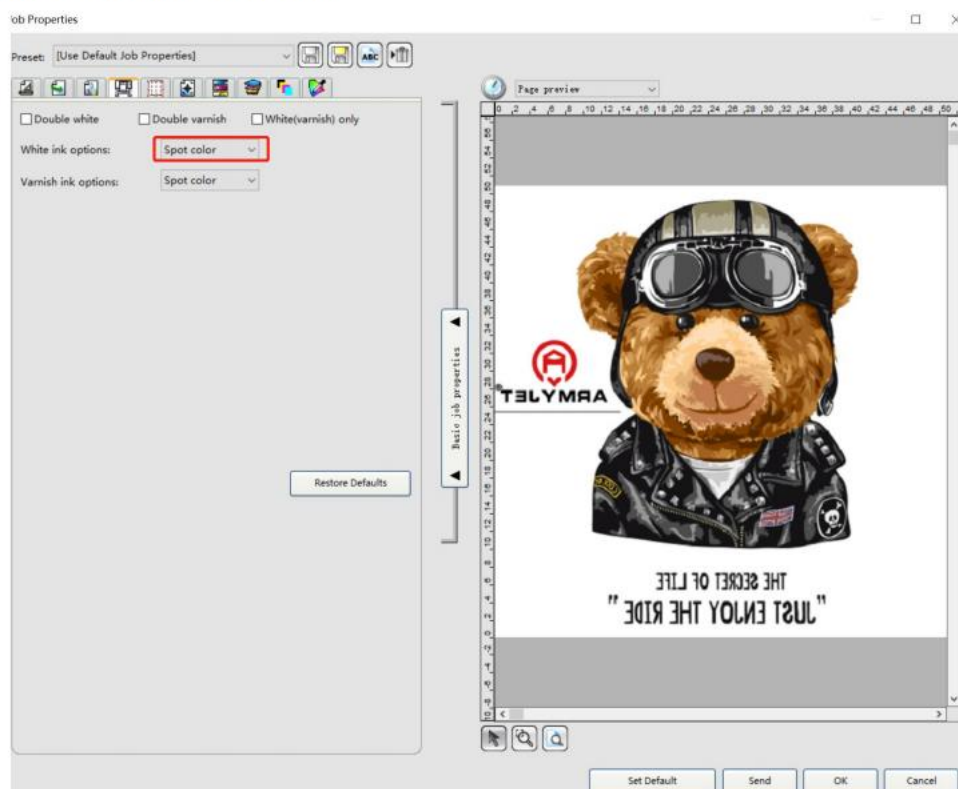
- ② Choose output profile and then click Send.



## Choose output profile



## White ink options:Spot color



## Spot white

