



AJ-1902i

Armyjet Manual for new printer installation

Warning

This manual is only suitable for Armyjet printers. If you install other non-Armyjet printers and face problems, Armyjet will not take responsibility. Armyjet owns the full copyright of this manual.

Armyjet will update its printers each year. So there may have some differences from the real printers.

1 Notes about installation

1.1 Installation environment

- Be sure that there is enough space
- Good environment: Temperature within 20-30°C, moisture within 40-60%
- Far away from sunshine, strong light and fire
- No dust.

1.2 Cautions

- Armyjet Power cable can only be used on Armyjet printers. Original power cable is more stable.
- The printer should be connected to outlet with earth wires.
- Power should meet local requirements.
- Don't use damaged wires
- Earth wire should be installed correctly.

1.3 Cautions in operation

- After power on, don't touch head and head cable
- If you need to move printer or replace any parts like head or head cable, please power it off first.
- Clean or do maintenance on the printer, please power off the printer first.
- Never pour off waste ink into natural waters or something like it.
- Once you open the ink bottle, please use it as soon as possible. It's bad for printing quality after you open the ink bottle for a long time and don't use it.
- Don't knock or shake the ink bottle, it will spill out ink.
- Keep the printer clean. Dust or liquid will cause electric leakage.
- Don't use high pressure air rifle to clean the printer.

1.4 Personnel Security Guide

- Keep the ink out the reach of Children.
- Never drink ink. If you happen to swallow some ink, please see the doctor as soon as possible.
- If some ink spills out on your skin, please clean with lots of water and some soap immediately.
- If ink happens to enter your eyes, please clean it with clean water.
- Add or replace ink or something others related to ink, please wear glove, surgical mask, and protective eye shields.

Part list



Item	Part name	Quantity	Standard
①	Power cable	1	
②	USB cable	1	
③	Photoprint DX version	1	
④	Ink dampers	2	
⑤	Pedestal Screw M5X16	20	
	Printhead Screw M3x6	10	
⑥	Head cable	8	
⑦	USB flash drive	1	

2、Printer installation



Front



Back

2.1 Pedestal Installation

2.1.1 Pedestal parts

Direction: Face the printer, guide by your left and right hands.

Front: F Back: B Left: L Right: R



① Foot stool



② Leg



③ Pull Rod



④ Base strutting piece



⑤ Waste ink bottle



⑥ mechanical fastener of Take up system



⑦ Fixed parts for fans

2.1.2 Pedestal Installation



Front



Side

①——②



②——③——②



②——④



②——⑤



②——⑥



Left



Right

②——⑦



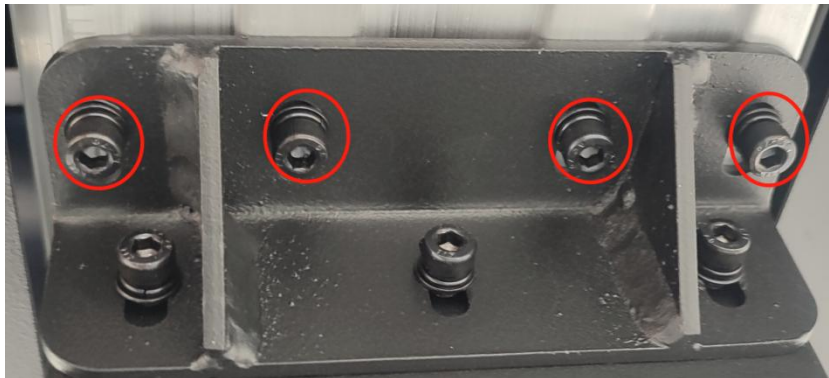
Left



Right

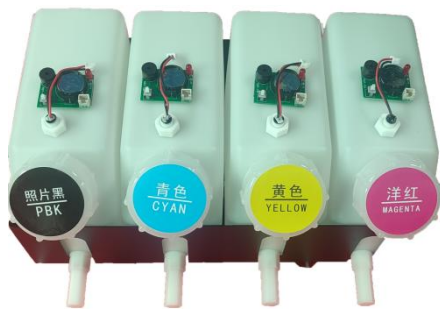
2.2 Connect printer body with Pedestal

2.2.1. Put the printer body on the pedestal, pay attention the four screws we marked, using these screws(M5X16) to fasten the printer



2.3 Ink supply system installation

2.3.1 Part name



Big ink pot



Fixing parts for ink pot



Ink cartridge



Column filter fixing part



Column filter

2.3.2 Ink Supply System Parts Installation

1. Connect big ink pot with Fixing parts for ink pot



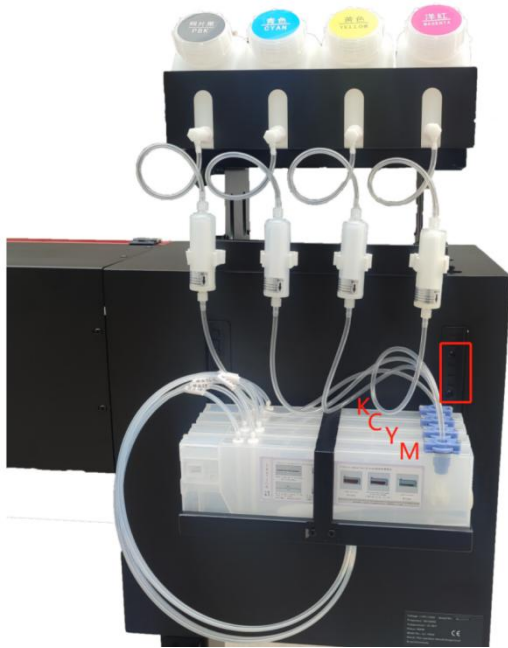
2. Connect Column filter fixing part with Fixing parts for ink pot



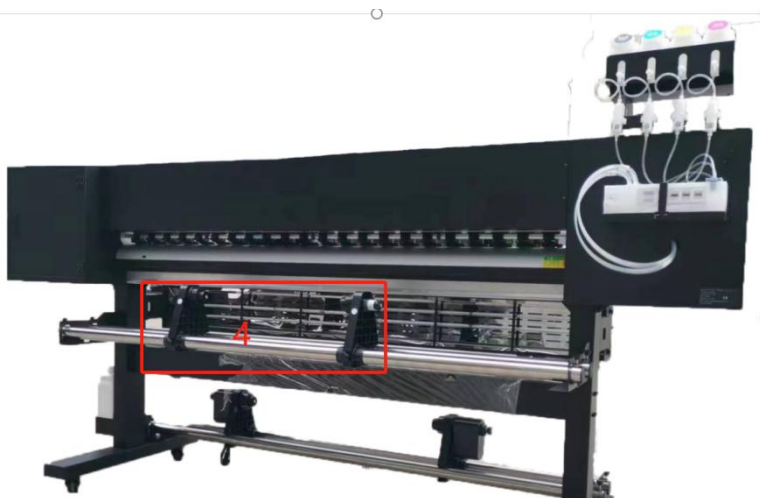
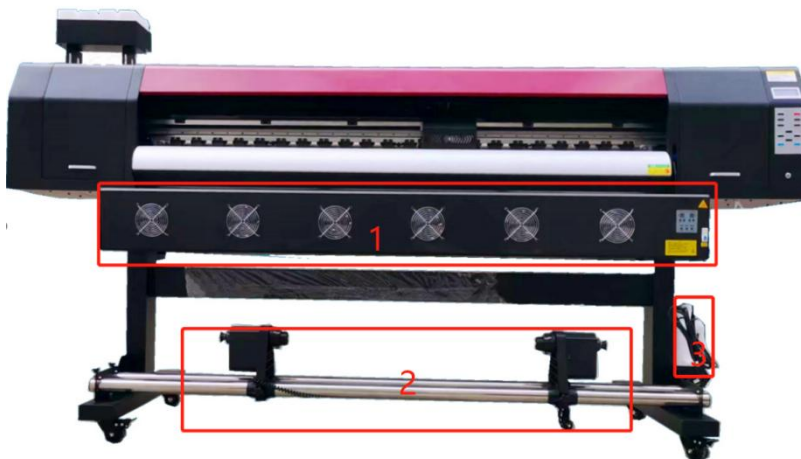
3. Fasten the ink pot fixing parts to the printer



4. Install ink cartridges and Column filters, and connect ink tube as below.



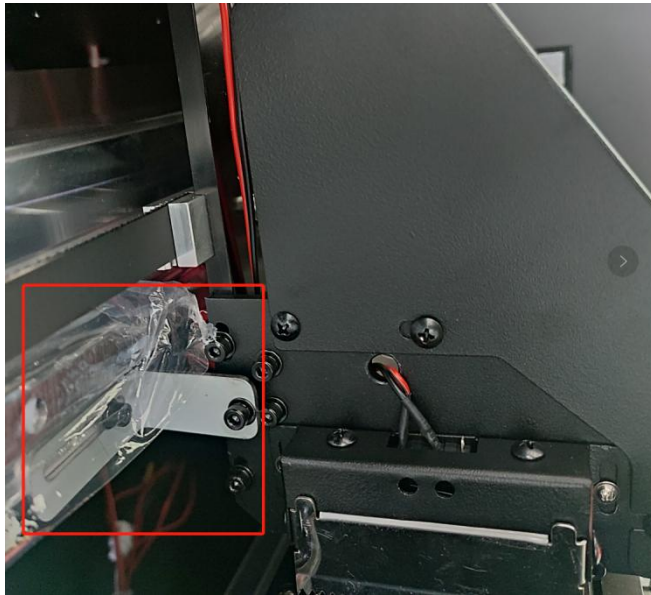
5. Install heating fans, take up system, waste ink pot, feeding system as below.



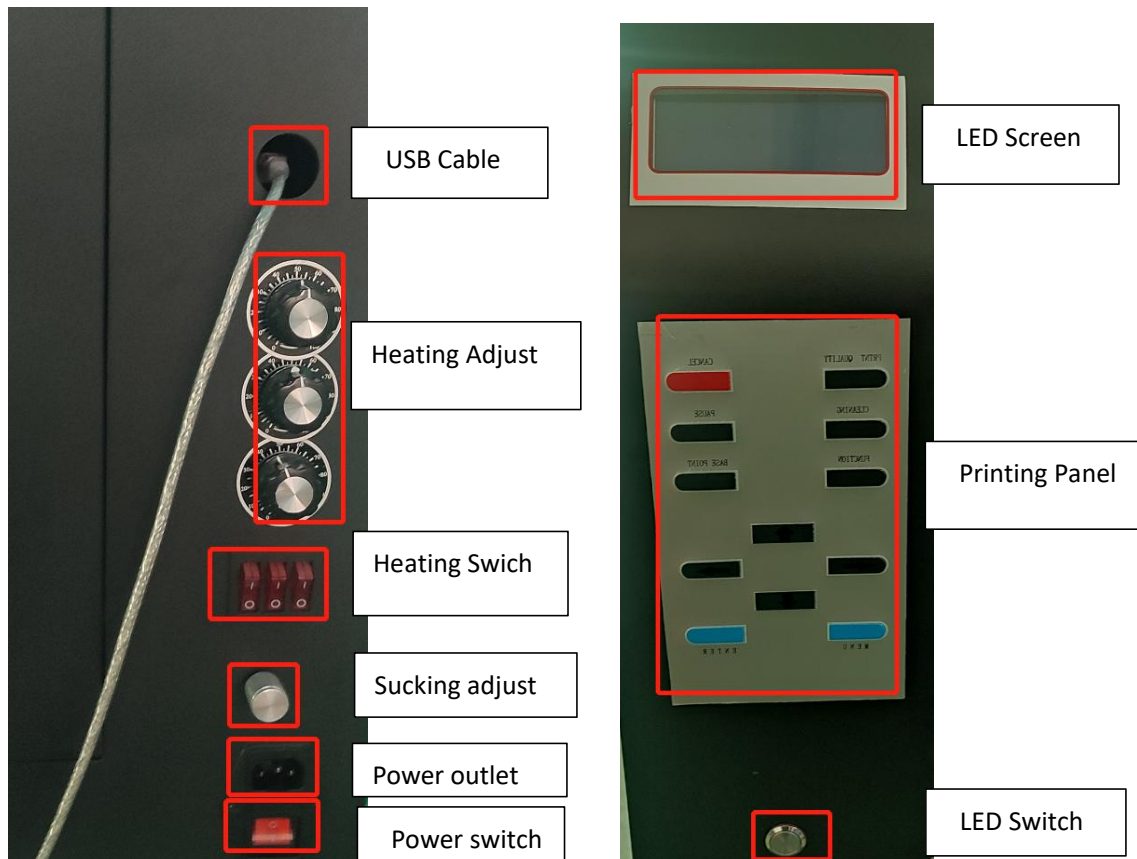
3. Printer Adjustment

3.1 Before power on your printer

Before you power on the printer, please remove the fixing parts on the carriage and peel off the film on the guide rail.



3.2 Functions



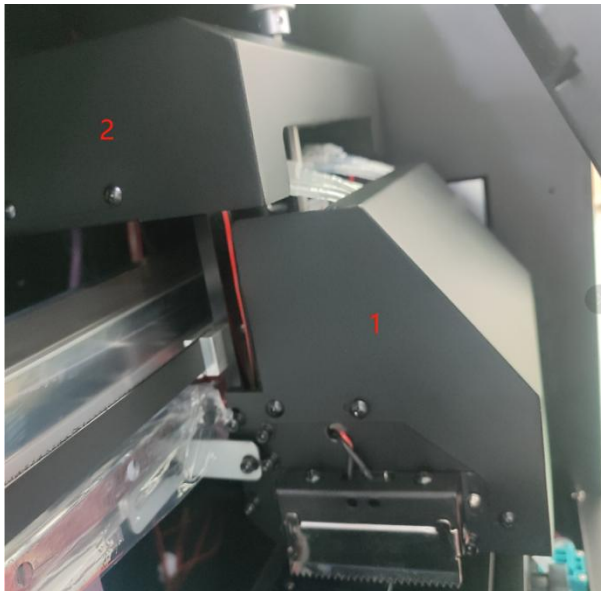
3.3 How to install printhead

3.3.1 Before installing printhead

1. After initialization, screen will show like below. And then test all functions from the panel and then power off the printer.



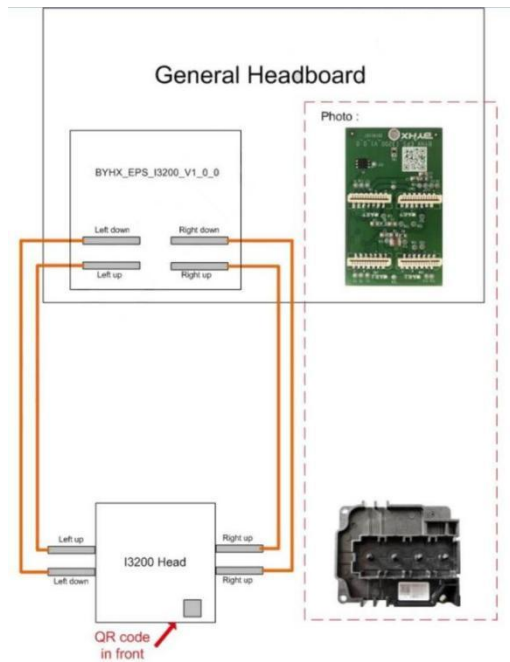
2. Remove the carriage cover and head board cover



3. Install Printhead

① Connect head cable like the image below.

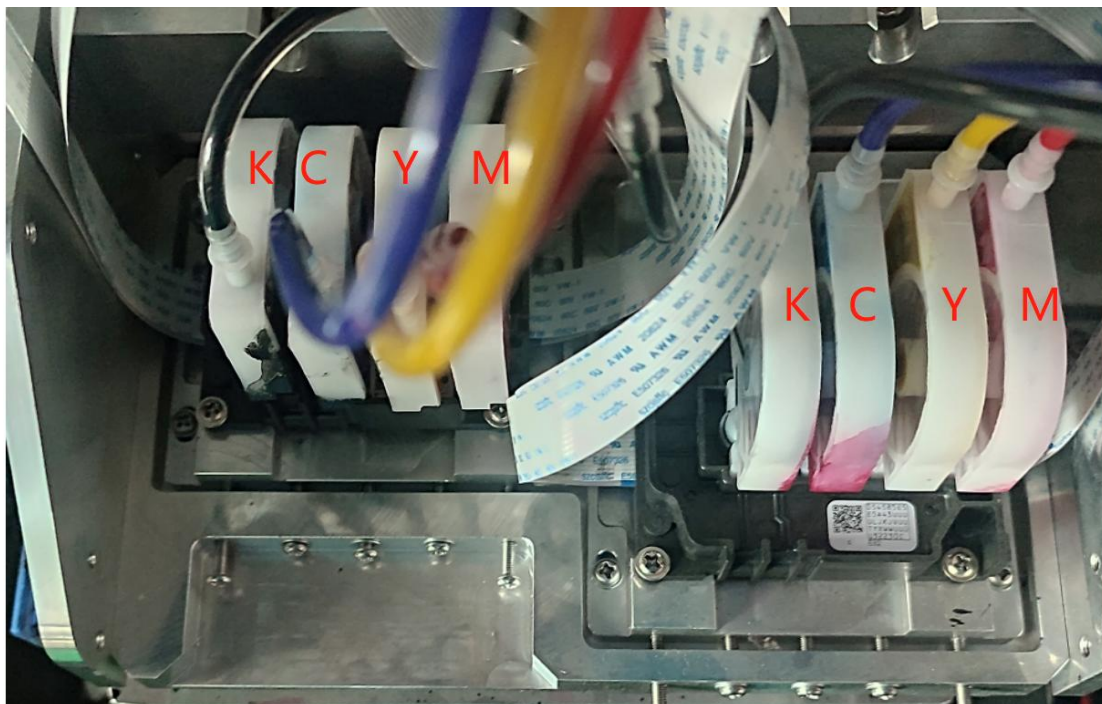




Connect head cable carefully, or it will burn your head or head board.

②. Install head on head plate like below.

③. After power on, loading ink. Load ink from ink pump and press cancel. After cleaning, choose weak cleaning to make sure that all nozzles can print.



4. How to install software and printer manager

4.1 PM

Note: Before you install Printer Manger, you need to **forbid digital signature** if you use Windows 10. Or you can't install printer manager. About how to forbid digital signature on your Windows 10, please read **Win10 Setting before PM Installation.pdf**.

Cleaning Parameters	2022/4/1 12:49	文件夹	
ICC Profile_photoprint	2022/4/1 12:49	文件夹	
Layout-2H	2022/4/1 12:49	文件夹	
Printer Manager	2022/4/8 13:57	文件夹	
Updater_headboard 2H	2022/4/1 12:49	文件夹	
Updater_mainboard-2H	2022/4/22 10:55	文件夹	
Waveform	2022/4/1 12:49	文件夹	
dotNetFx40_Full_x86_x64	2019/2/27 14:40	应用程序	49,268 KB
PhotoPrint Installation manual	2022/4/7 15:11	Microsoft Edge PD...	8,017 KB
Win10 Setting before PM Installation.pdf	2022/4/7 14:46	Microsoft Edge PD...	1,392 KB

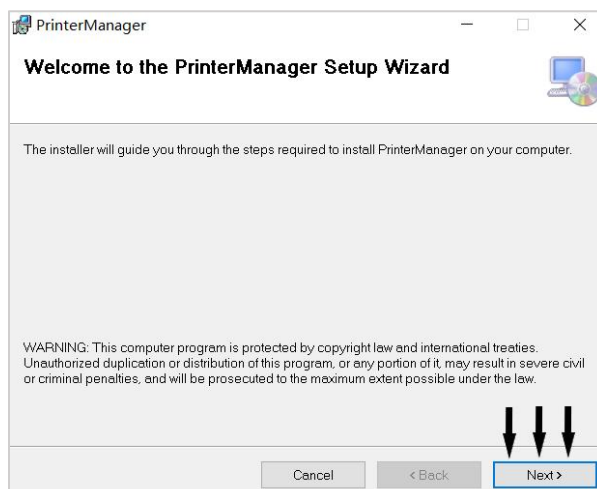
(1) Open **A+PM20210616** file where printer manager locates.

Printer Manager > A+PM20210616				
在 A+PM20210616 中搜索				
名称	修改日期	类型	大小	
Layout	2022/4/22 10:51	文件夹		
app	2020/2/24 15:31	ICO 图片文件	15 KB	
setup	2021/6/16 16:13	应用程序	418 KB	
SetupPrinterManager_x64	2021/6/16 16:13	Windows Installer ...	32,791 KB	
Vender	2020/2/24 15:31	XML 文档	1 KB	

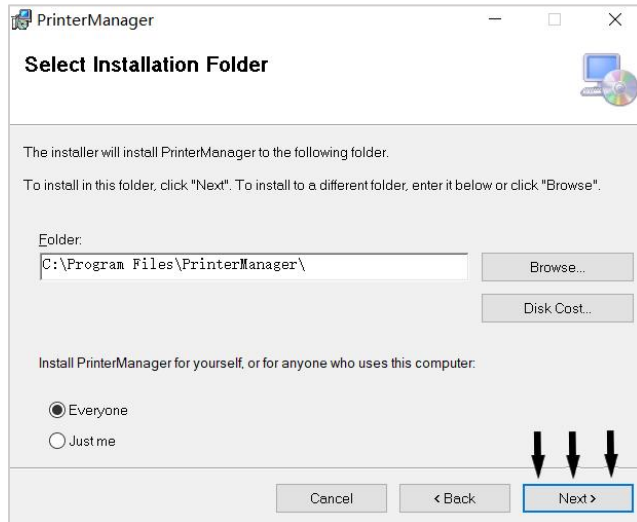
(2) Click **setup.exe** to install Printer Manager.

app.ico	2017/2/28 16:18	图标	15 KB
setup.exe	2019/12/16 14:31	应用程序	418 KB
SetupPrinterManager_x64.msi	2019/12/16 14:32	Windows Install...	27,536 KB
Vender.xml	2017/2/28 16:18	XML 文档	1 KB

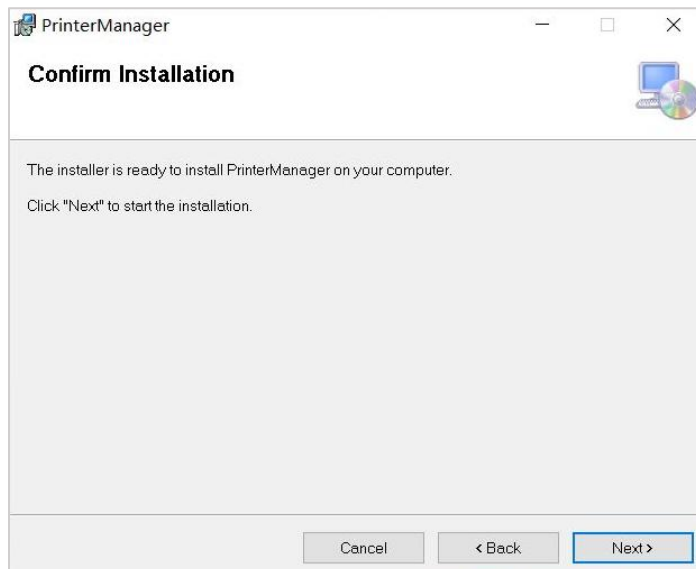
(3) When you see the following image, then click **Next**.



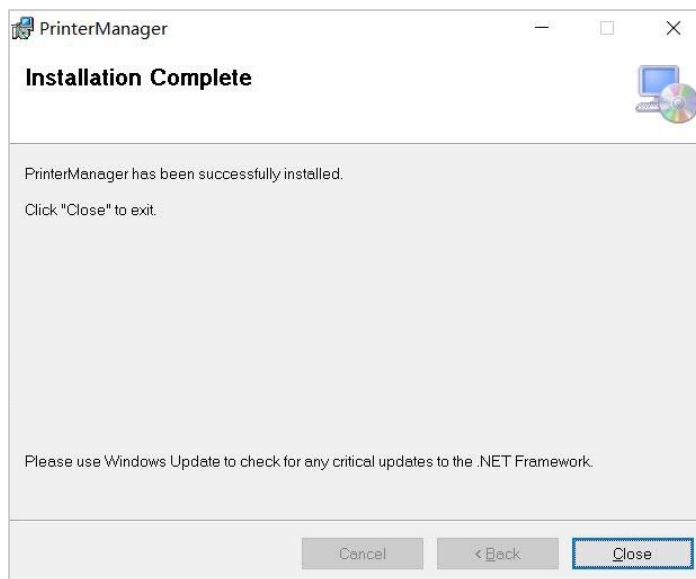
(4) When you see the following, click **Browse** to choose where you want to install printer manager. And then click **Next**.



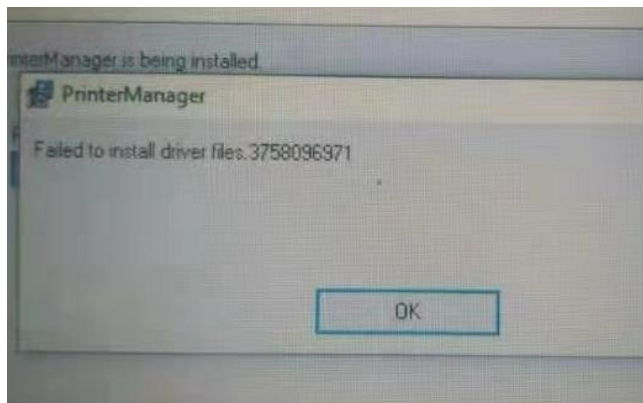
(5) When you see the following, click **Next** to continue.



(6) After installation complete, click **Close**.













During the installation, if you see the following, it means that you need to install computer environment **dotNetFx40 Full x86 x64**.



件 > 2H 软件资料整理_04012022 > 2H 资料整理

搜索"2H 资料整理"

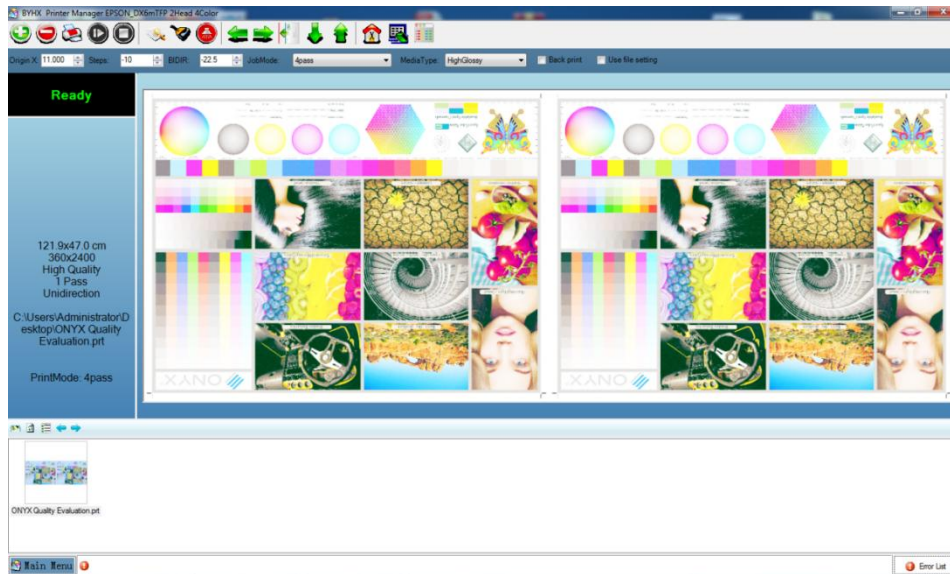
名称	修改日期	类型	大小
 Cleaning Parameters	2022/4/1 12:49	文件夹	
 ICC Profile_photoprint	2022/4/1 12:49	文件夹	
 Layout-2H	2022/4/1 12:49	文件夹	
 Printer Manager	2022/4/8 13:57	文件夹	
 Updator_headboard 2H	2022/4/1 12:49	文件夹	
 Updator_mainboard 2H_V10.0	2022/4/1 12:49	文件夹	
 Waveform	2022/4/1 12:49	文件夹	
 dotNetFx40_Full_x86_x64	2019/2/27 14:40	应用程序	49,268 KB
 PhotoPrint Installation manual	2022/4/7 15:11	Microsoft Edge PD...	8,017 KB
 Win10 Setting before PM Installation.pdf	2022/4/7 14:46	Microsoft Edge PD...	1,392 KB

4.2 How to Use Printer Manager

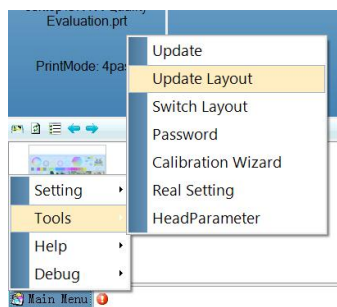
1. Click the following icon



2. After you enter main menu, then we need to set the printer.

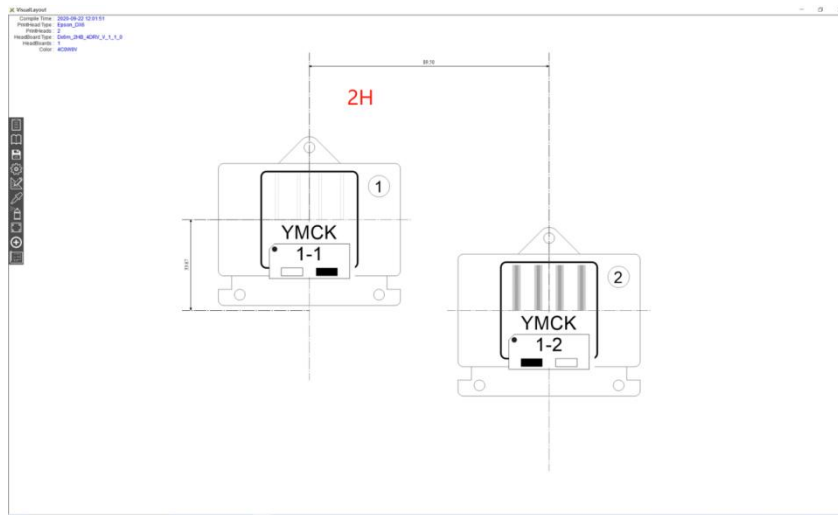
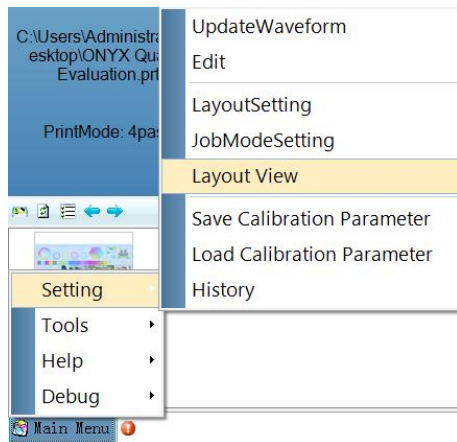


① Update head layout like the below. If your printer is single head, then choose Layout-1H. If it's double heads, then choose Layout-2H.

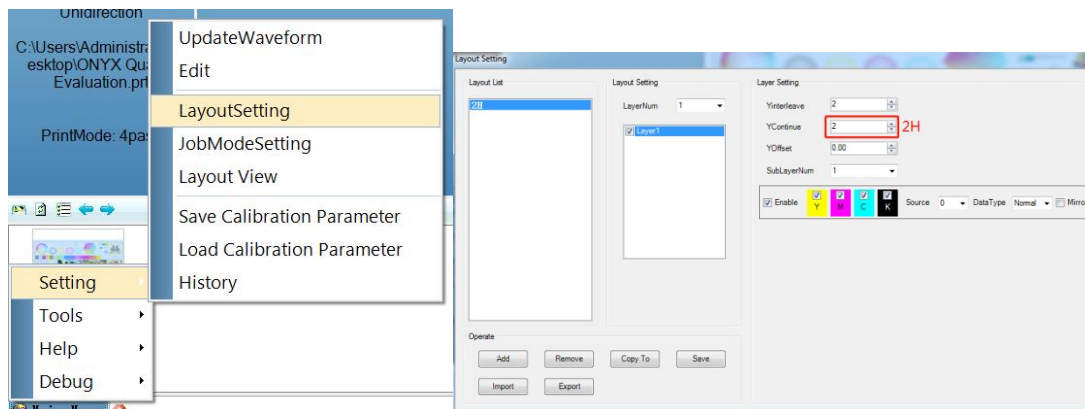


Cleaning Parameters	2022/4/22 10:55	文件夹	
ICC Profile_photoprint	2022/4/22 10:55	文件夹	
Layout-2H	2022/4/22 10:55	文件夹	
Printer Manager	2022/4/22 10:55	文件夹	
Updater_headboard 2H	2022/4/22 10:55	文件夹	
Updater_mainboard 2H_V10.0	2022/4/22 10:55	文件夹	
Waveform	2022/4/22 10:55	文件夹	
dotNetFx40_Full_x86_x64	2019/2/27 14:40	应用程序	49,268 KB
PhotoPrint Installation manual	2022/4/7 15:11	Microsoft Edge PD...	8,017 KB
Win10 Setting before PM Installation.pdf	2022/4/7 14:46	Microsoft Edge PD...	1,392 KB

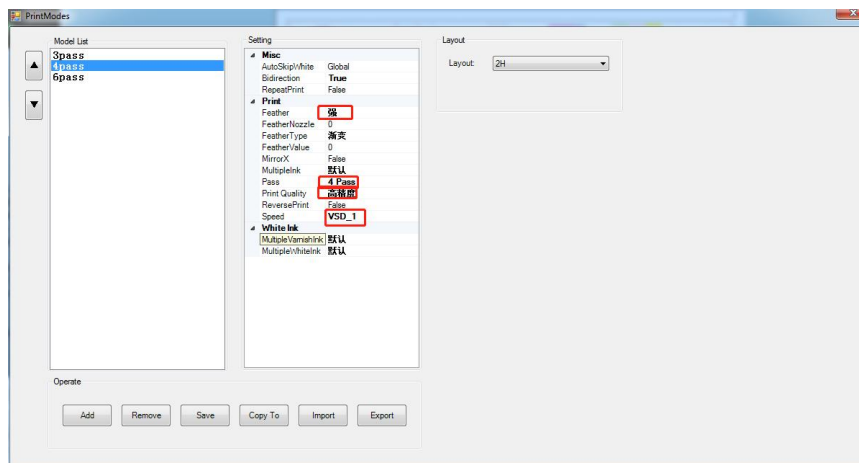
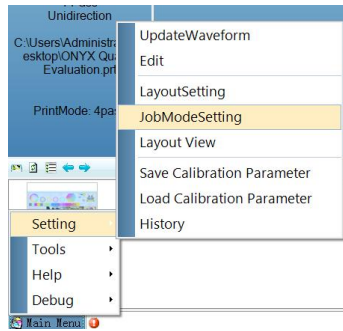
② After you update layout, please click layout view to check if you update the right one.



③ Layout setting

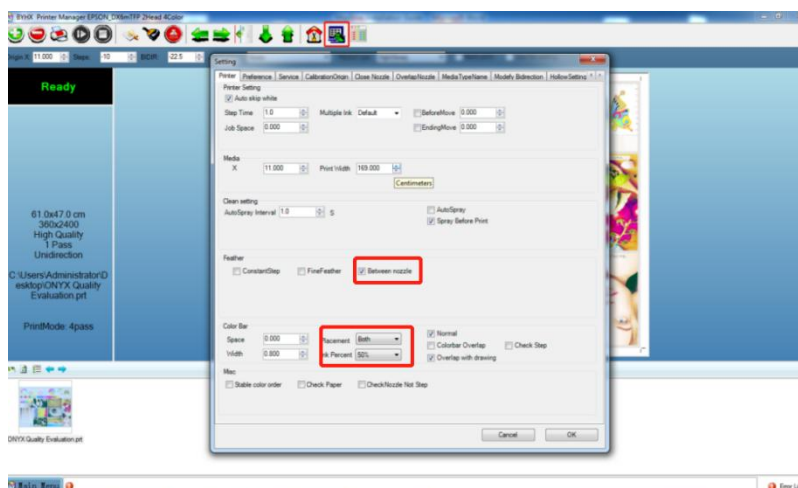


④ JobModeSetting

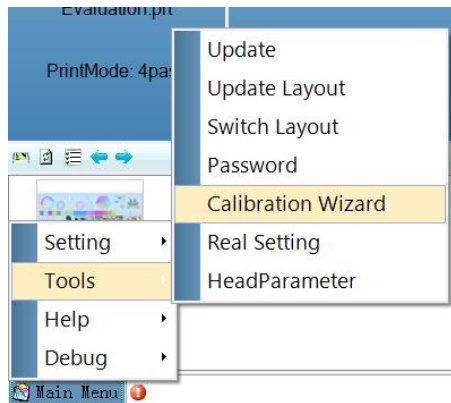


Recommend to use VSD1, strong feather, printer quality(High Precision)

⑤ Edit

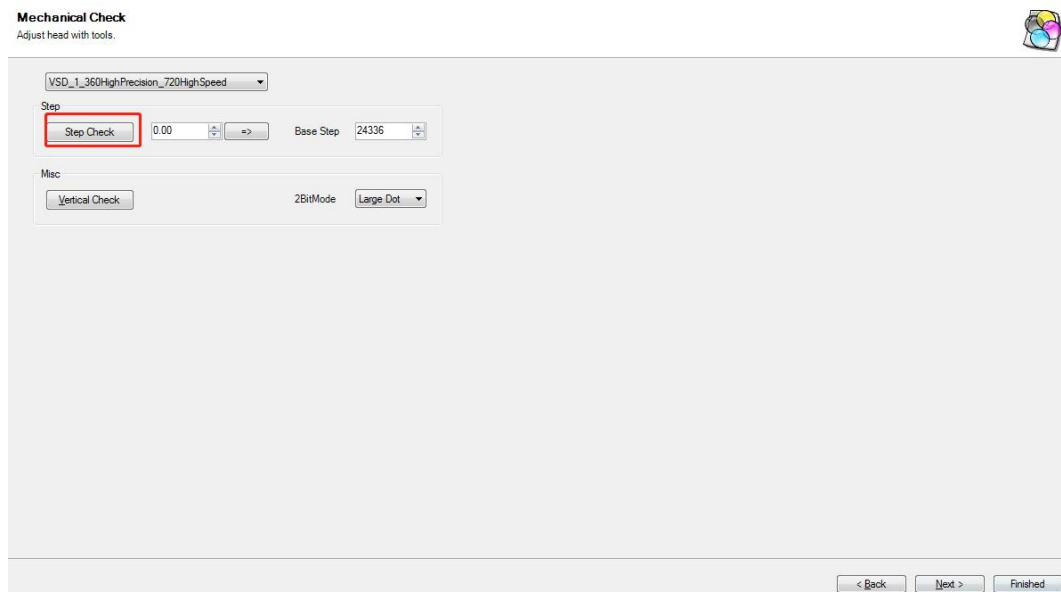


4.2 How to do Calibration

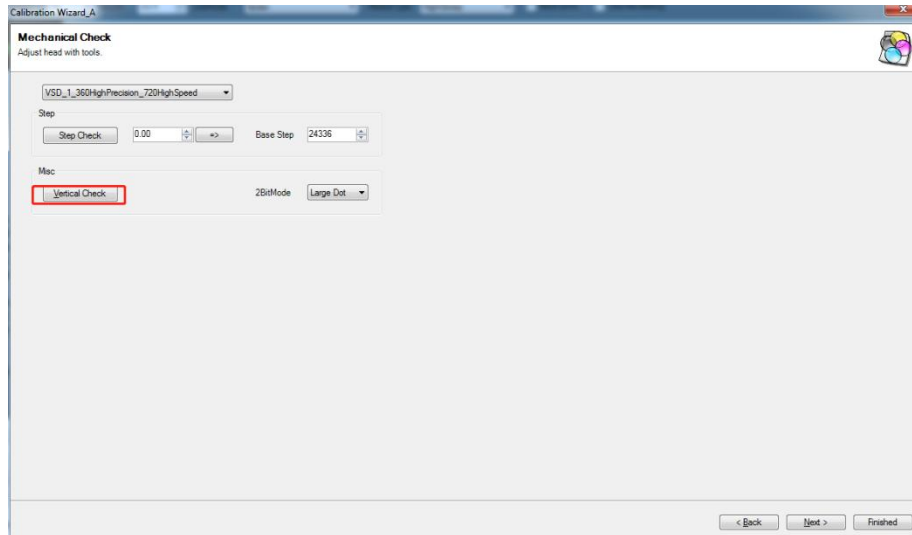


Calibration mode: Vsd 1 360 precision_720 high speed

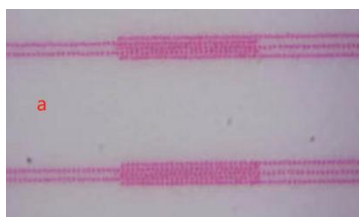
1. Step Check Enter value according to the real Calibration image. After you click step check, the printer will print a calibration image.



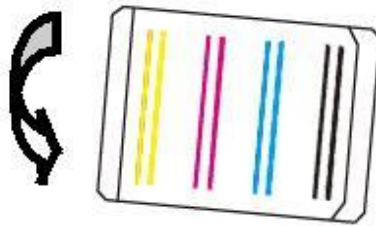
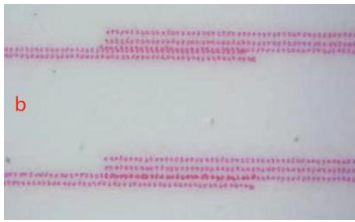
2. Vertical check Also vertical calibration, it' s to adjust head angle so that printhead is aligned with the printing platform vertically. Usually, you need to adjust screws on the head plate.



Recommend to use 80-100 magnifier to look at the right channel.



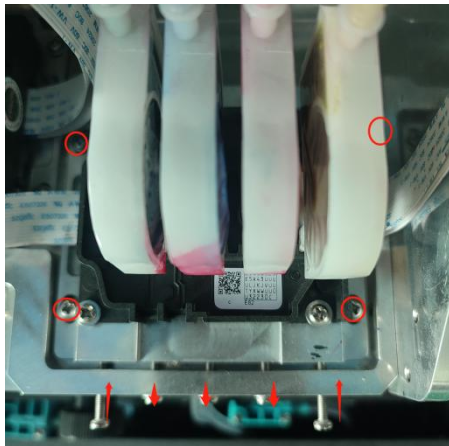
When it looks like the above, then it means your vertical check is perfect.



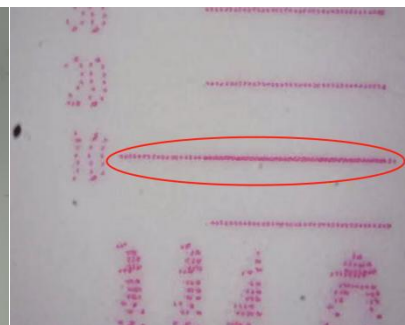
When condition **b** appears, it means that head lens to the right, then please adjust the screw as the arrow.



When condition **c** appears, it means that head lens to the left, then please adjust the screw as the arrow.



When you use printer manager to print nozzle check, adjust the second head so that the head gap is perfectly at 10.



3. Group gap left

Print calibration image and enter the proper value to offset, make sure “0” is aligned perfectly.

Calibration Wizard A:

Group

Group G1 G2

Left 0 -9

Right 0 -9

Horizontal GroupQuick

Bidirection -15.0

Head 1 (Y) 3 (C) 5 (K) 7 (M) 9 (Y) 11 (C) 13 (K) 15 (M)

Left 0 0 0 0 0 0 0 0

Right 0 0 0 0 0 0 0 0

Vertical Overlap

Head Y M C K

0 0 0 0

20 20 20 20

Step 4 Pass

Revise: 0.00 Step 0 Base Step 24287

Print Save < Back Next > Finished

4. Group gap Right

Print calibration image and enter the proper value to offset, make sure “0” is aligned perfectly.

Calibration Wizard A:

Group

Group G1 G2

Left 0 4

Right 0 2

Horizontal GroupQuick

Bidirection -23.0

Head 1 (Y) 3 (C) 5 (K) 7 (M) 9 (Y) 11 (C) 13 (K) 15 (M)

Left 0 0 0 0 -2 -1 0 0

Right 2 0 0 0 1 1 0 0

Vertical Overlap

Head Y M C K

0 0 0 0

42 42 42 42

Step 8 Pass

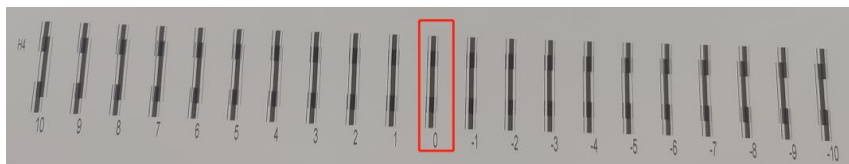
Revise: 0.00 Step 0 Base Step 24238

Print Save < Back Next > Finished

5. Horizontal calibration

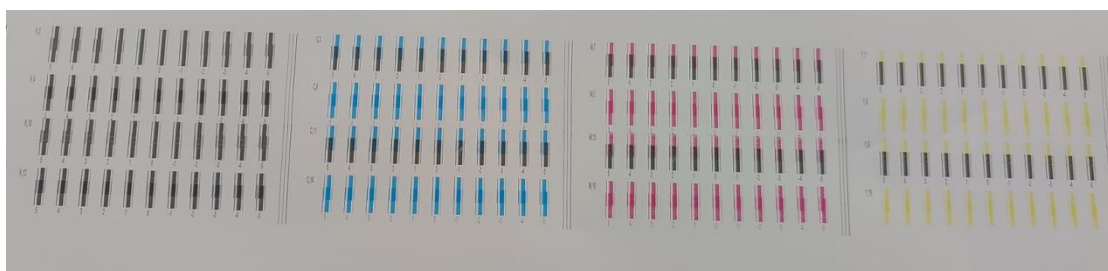
(1) Bidirectional Calibration, Choose Group all Calibration

Print calibration image and enter the proper value to offset, make sure “0” is aligned perfectly.



(2) Left alignment Right Alignment

Print calibration image and enter the proper value to offset, make sure “0” is aligned perfectly.



6. Overlap

Enter 20, print calibration image. Adjust values according to calibration image. Make sure that two heads are matched perfectly.

Calibration Wizard_A: ×

Group

Group: G1 G2

Left: 0 -4

Right: 0 2

Horizontal

Group/Calibration

Bidirection: 23.0

Head: 1 (Y) 2 (M) 3 (C) 4 (K) 5 (K) 6 (C) 7 (M) 8 (Y) 9 (Y) 10 (M) 11 (C) 12 (K) 13 (K) 14 (C) 15 (M) 16 (Y)

Left: 0 0 0 0 0 0 0 1 2 0 1 0 0 0 0 0

Right: 2 0 0 0 0 0 0 0 0 1 0 1 0 1 0 0

Vertical/Overlap (Overlap)

Head: Y M C K

0 0 0 0

20 20 20 20

Step: 4 Pass

Revise: 0.00

Step: 0

Base Step: 24238

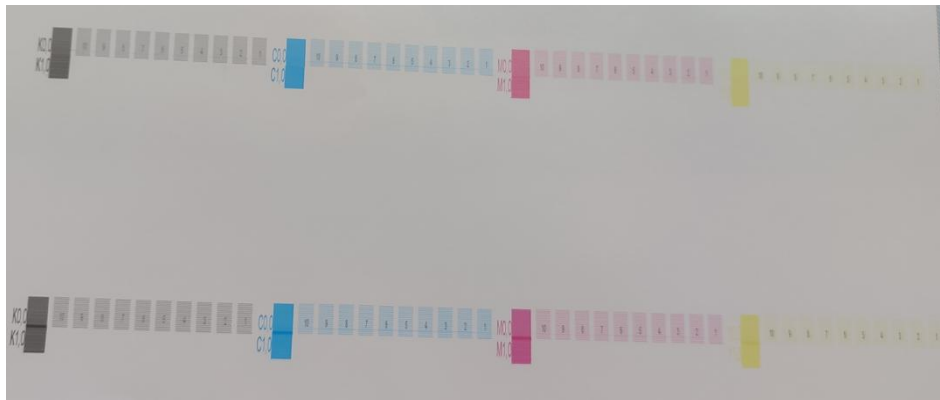
Print

Save

< Back

Next >

Finished



3. How to Install Photoprint

"PhotoPrint Installation manual" About how to install in details, please take a look

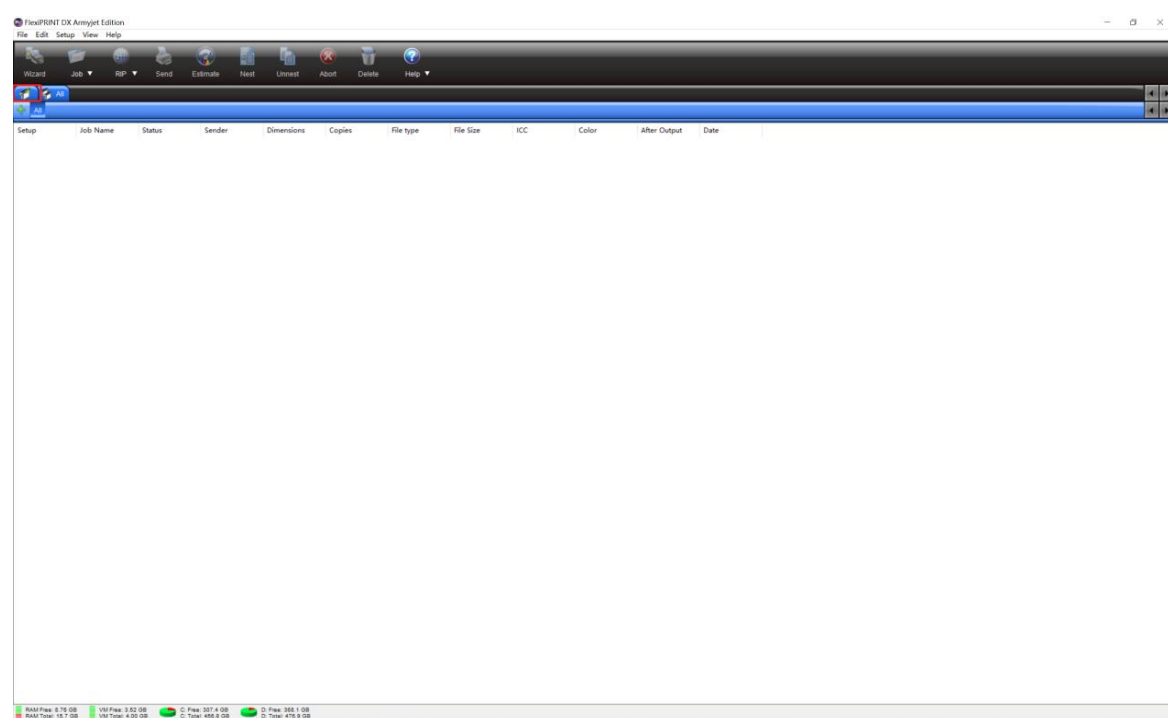
at PhotoPrint Installation manual.

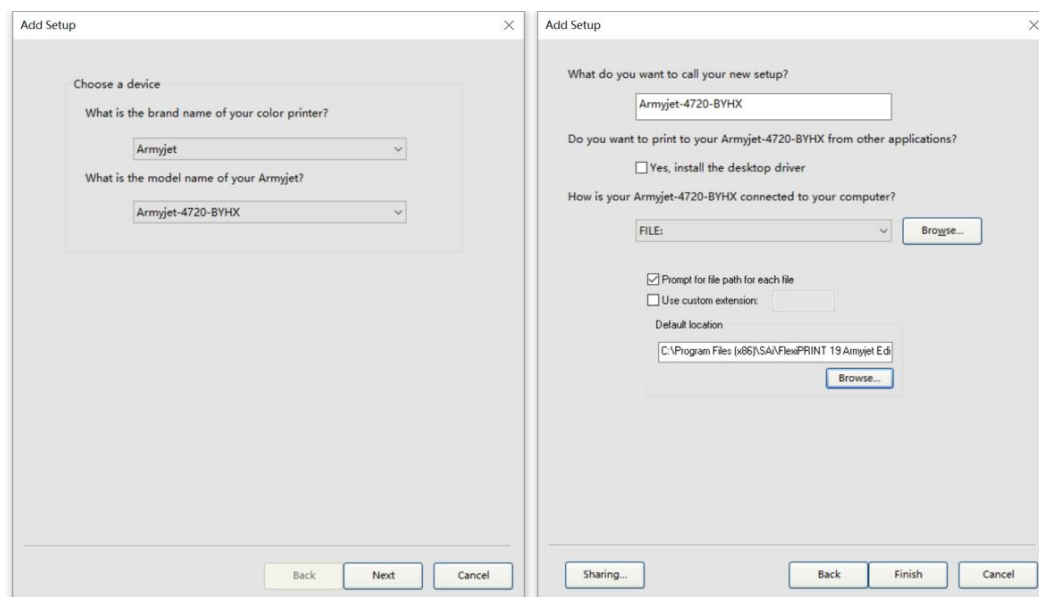
名前	修訂履歴	属性	サイズ
Cleaning Parameters	2022/4/22 10:48	文件夹	
ICC Profile_photoprint	2022/4/22 10:47	文件夹	
Layout-1H	2022/4/22 10:50	文件夹	
Printer Manager	2022/4/22 10:51	文件夹	
Updater_headboard 1H	2022/4/22 10:49	文件夹	
Updater_mainboard 1H_V10.0	2022/4/22 10:47	文件夹	
Waveform	2022/4/22 10:47	文件夹	
dotNetFx40_Full_x86_x64	2019/2/27 14:40	应用程序	49,268 KB
PhotoPrint Installation manual	2022/4/7 15:11	Microsoft Edge PD...	8,017 KB
Win10 Setting before PM Installation.pdf	2022/4/7 14:46	Microsoft Edge PD...	1,392 KB

3.1 Click this Icon to open photoprint software.



② Add printer. Do as below.





③ Open the **ICC Profile_photoprint**

名称	修改日期	类型	大小
Cleaning Parameters	2022/4/19 9:12	文件夹	
ICC Profile_photoprint	2022/4/19 9:11	文件夹	
Layout-1H	2022/4/19 9:13	文件夹	
Printer Manager	2022/4/19 9:13	文件夹	
Updater_headboard 1H	2022/4/21 17:08	文件夹	
Updater_mainboard 1H_V10.0	2022/4/19 9:14	文件夹	
Updater_mainboard-1H	2022/3/31 9:31	文件夹	
Waveform	2022/3/31 9:31	文件夹	
dotNetFx40_Full_x86_x64	2019/2/27 14:40	应用程序	49,268 KB
PhotoPrint Installation manual	2022/4/7 15:11	Microsoft Edge PD...	8,017 KB
Win10 Setting before PM Installation.pdf	2022/4/7 14:46	Microsoft Edge PD...	1,392 KB

④ Copy all the files as below.

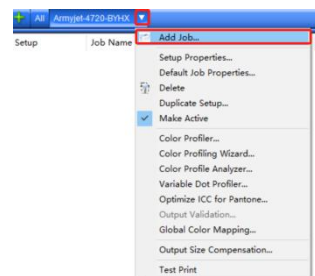
ICC Profile_photoprint > BYHX-4720				
在 BYHX-4720 中搜索				
名称	修改日期	类型	大小	
AJ_BYHX_I3200_ECO_new1_2pass 360x1200	2022/6/9 13:42	ICC 配置文件	1,323 KB	
AJ_BYHX_I3200_ECO_new1_3pass 360x1800	2022/6/9 14:15	ICC 配置文件	1,323 KB	
AJ_BYHX_I3200_ECO_new1_4pass 360x2400	2022/6/9 11:25	ICC 配置文件	1,379 KB	
AJ_BYHX_I3200_ECO_new1_6pass 360x3600	2022/6/9 11:35	ICC 配置文件	1,379 KB	
AJ_BYHX_I3200_ECO_PVC_4PASS 360x2400	2022/6/9 14:36	ICC 配置文件	1,379 KB	
AJ_BYHX_I3200_ECO_PVC_6PASS 360x3600	2022/6/9 14:47	ICC 配置文件	1,379 KB	

⑤ Open the file where you install photoprint and find ICC profile→BYHX-4720, and the paste them here.

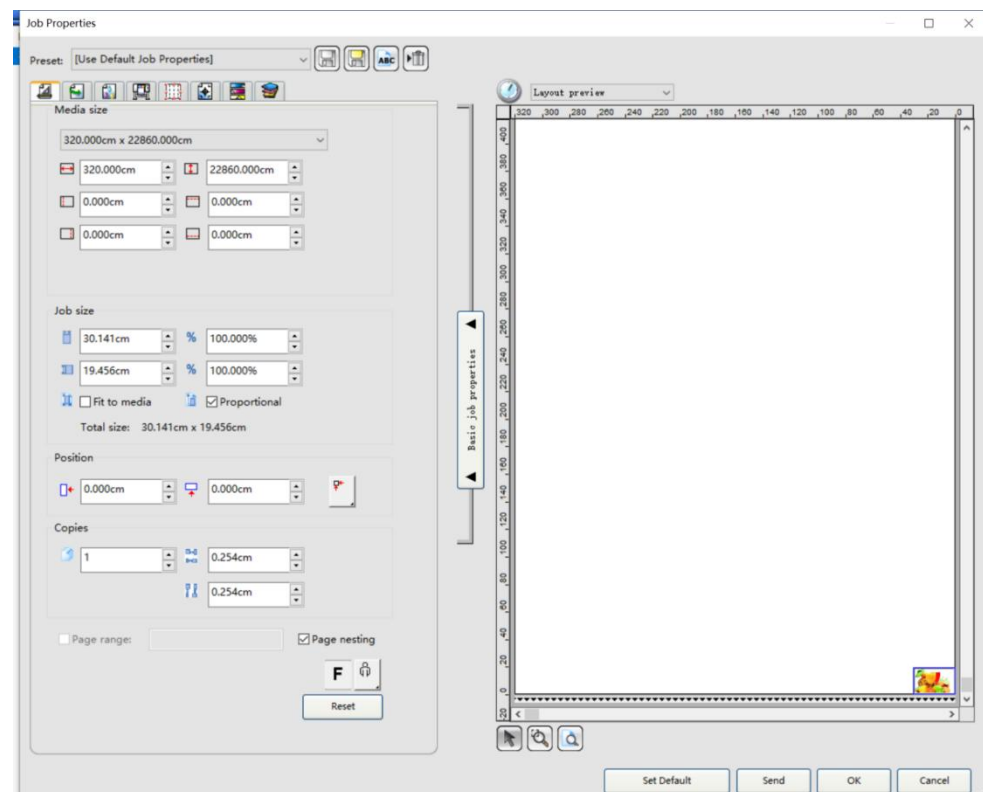
脑 > OS (C:) > Program Files (x86) > Sai > FlexiPRINT 19 Armyjet Edition > ICCProfile > BYHX-4720

名称	修改日期	类型	大小
 AJ_BYHX_I3200_ECO_new1_2pass 360x1200	2022/6/9 13:42	ICC 配置文件	1,323 KB
 AJ_BYHX_I3200_ECO_new1_3pass 360x1800	2022/6/9 14:15	ICC 配置文件	1,323 KB
 AJ_BYHX_I3200_ECO_new1_4pass 360x2400	2022/6/9 11:25	ICC 配置文件	1,379 KB
 AJ_BYHX_I3200_ECO_new1_6pass 360x3600	2022/6/9 11:35	ICC 配置文件	1,379 KB
 AJ_BYHX_I3200_ECO_PVC_4PASS 360x2400	2022/6/9 14:36	ICC 配置文件	1,379 KB
 AJ_BYHX_I3200_ECO_PVC_6PASS 360x3600	2022/6/9 14:47	ICC 配置文件	1,379 KB

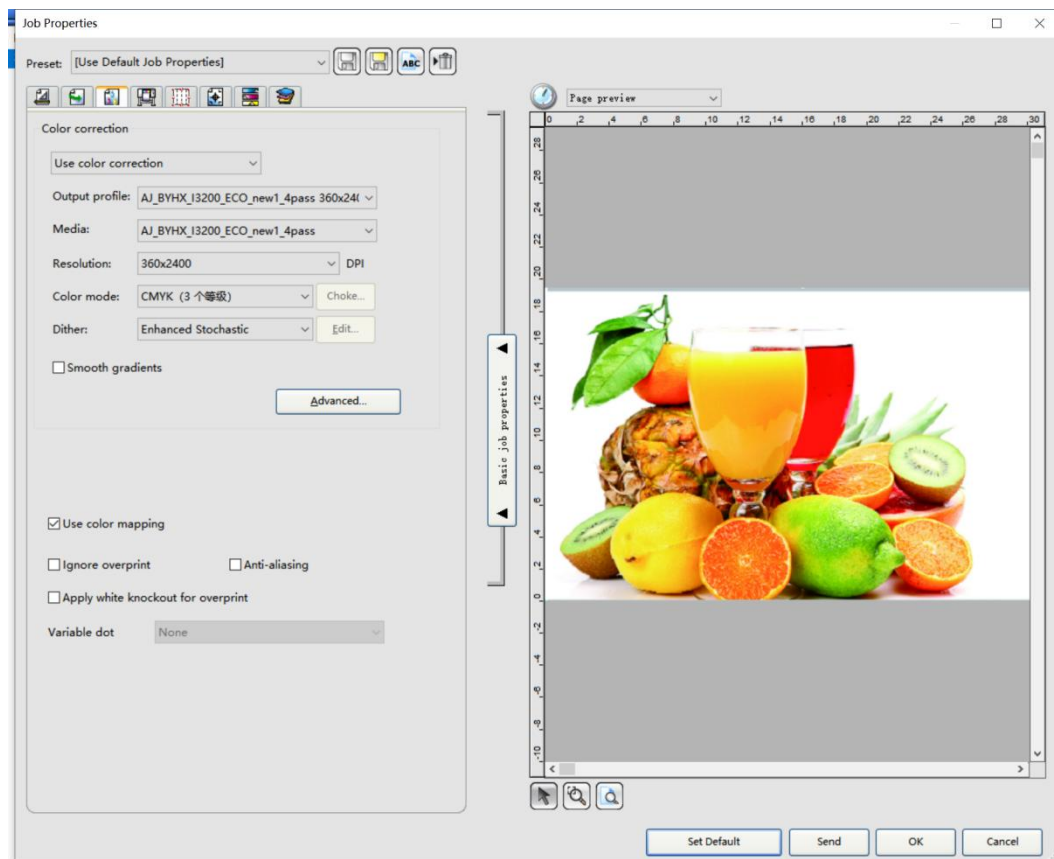
⑥ Add Job



Edit the image

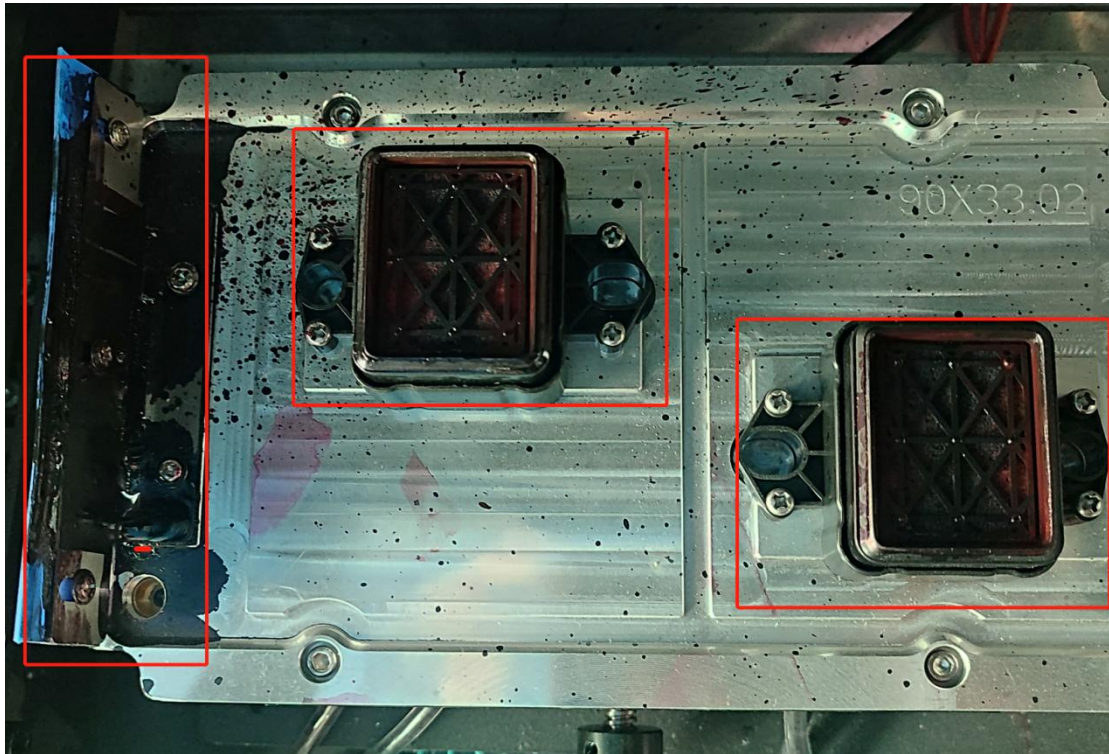


Choose output profile and then click Send.



5. How to maintain.

1. Regularly clean wiper and ink cap



2. Regularly clean head plate



4. Power on printer, clean head each day. Check nozzle state.
5. Long time no use, printhead is easy to be blocked. You can pour some cleaning liquid to the ink cap, moving head back to ink cap.
6. When your printer has any error report, take photos and power off printer, move head back to ink cap. Ask technicians to help you.