

+



ARMYJET

AJ-1903iUV(WCV)

Armyjet Manual for new printer installation

Warning

This manual is only suitable for Armyjet printers. If you install other non-Armyjet printers and face problems, Armyjet will not take responsibility. Armyjet owns the full copyright of this manual.

Armyjet will update its printers each year. So there may have some differences from the real printers.

1 Notes about installation

1.1 Installation environment

- Be sure that there is enough space
- Good environment: Temperature within 20-30°C, moisture within 40-60%
- Far away from sunshine, strong light and fire
- No dust.

1.2 Cautions

- Armyjet Power cable can only be used on Armyjet printers. Original power cable is more stable.
- The printer should be connected to outlet with earth wires.
- Power should meet local requirements.
- Don't use damaged wires
- Earth wire should be installed correctly.

1.3 Cautions in operation

- After power on, don't touch head and head cable
- If you need to move printer or replace any parts like head or head cable, please power it off first.
- Clean or do maintenance on the printer, please power off the printer first.
- Never pour off waste ink into natural waters or something like it.
- Once you open the ink bottle, please use it as soon as possible. It's bad for printing quality after you open the ink bottle for a long time and don't use it.
- Don't knock or shake the ink bottle, it will spill out ink.
- Keep the printer clean. Dust or liquid will cause electric leakage.
- Don't use high pressure air rifle to clean the printer.

1.4 Personnel Security Guide

- Keep the ink out the reach of Children.
- Never drink ink. If you happen to swallow some ink, please see the doctor as soon as possible.
- If some ink spills out on your skin, please clean with lots of water and some soap immediately.
- If ink happens to enter your eyes, please clean it with clean water.
- Add or replace ink or something others related to ink, please wear glove, surgical mask, and protective eye shields.

Part list



Item	Part name	Quantity	Standard
①	Power cable	1	
②	Photoprint UV version	1	
③	USB flash drive	1	
④	Ink dampers	4	
⑤	Pedestal Screw M6X16	14	
	Printhead Screw M3x6	12	
⑥	Head cable	14	
⑦	inductor	1	

2、Printer installation



Front



Back

2.1 Pedestal Installation

2.1.1 Pedestal parts

Direction: Face the printer, guide by your left and right hands.

Front: F Back: B Left: L Right: R



① Foot stool



② Leg



③ Pull Rod



④ Base strutting piece



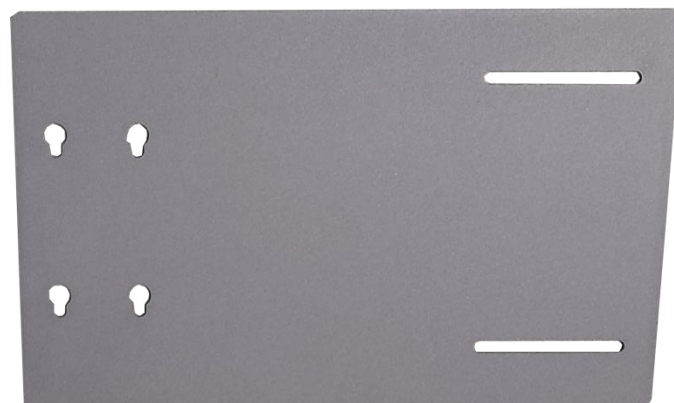
⑤ Waste ink bottle



⑥ mechanical fastener system



⑦ Take up system



⑧ Fixed parts for LED

2.1.2 Pedestal Installation



①



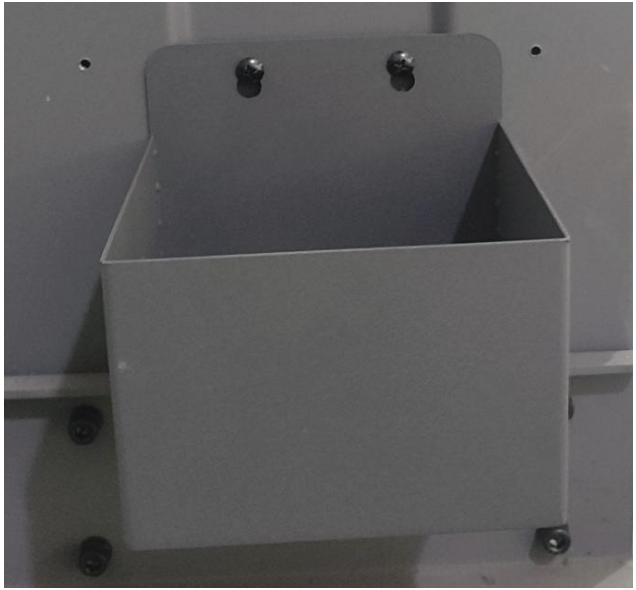
②



③



④



⑤



⑥

2.2 Connect printer body with Pedestal

2.2.1. Put the printer body on the pedestal, pay attention the four screws we marked, using these screws(M6X16) to fasten the printer



2.3 Ink supply system installation



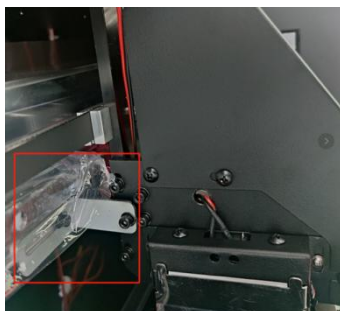
2.4. Install heating fans, take up system, waste ink pot, feeding system as below.



3. Printer Adjustment

3.1 Before power on your printer

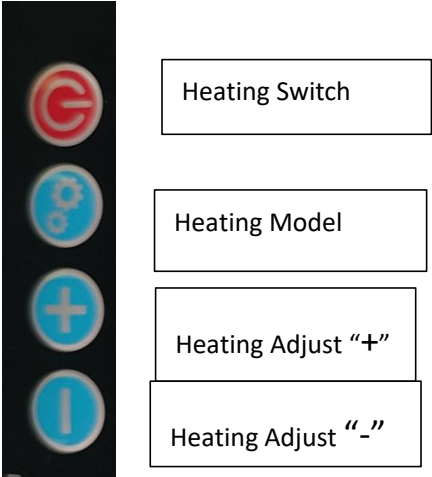
Before you power on the printer, please remove the fixing parts on the carriage and peel off the film on the guide rail.



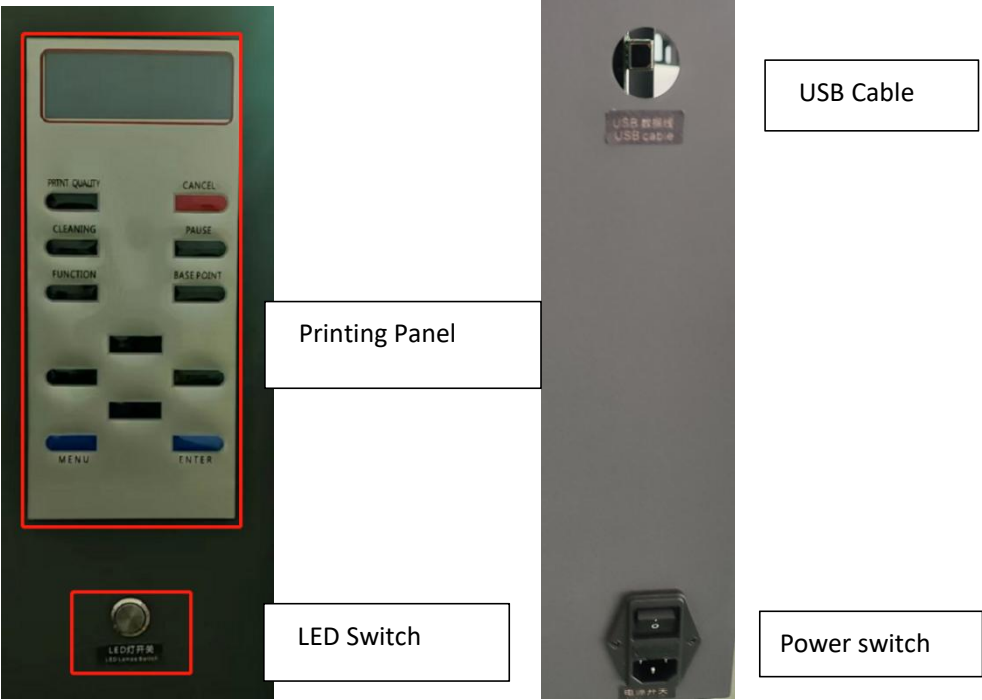
3.2 Functions



①Temperature Control



②Sucking adjust



3.3 How to install printhead

3.3.1 Before installing printhead

1. After initialization, screen will show like below. And then test all functions from the panel and then power off the printer.

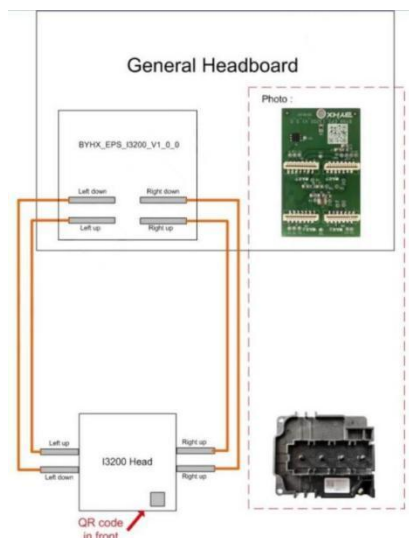


2. Remove the carriage cover and head board cover



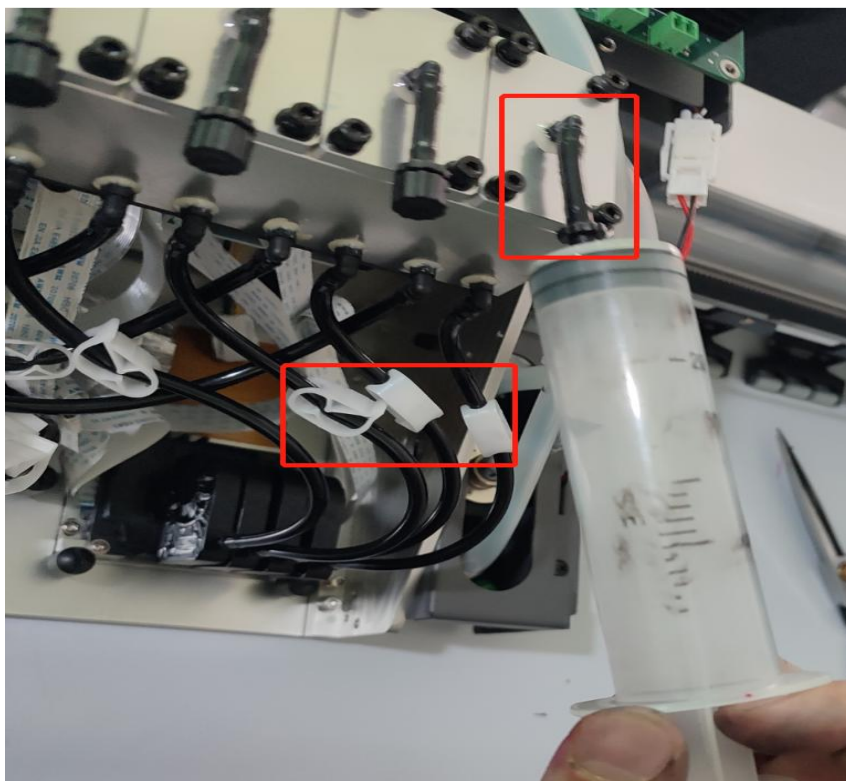
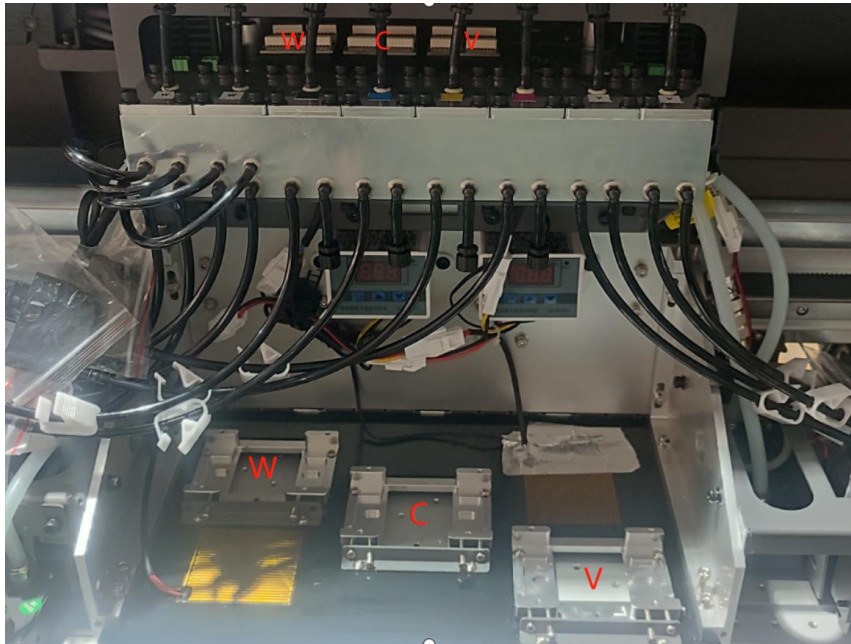
3. Install Printhead

① Connect head cable like the image below.



Connect head cable carefully, or it will burn your head or head board.

②.Install head on head plate like below.Tighten pipe clamps first, then use syringe to suck ink from sub-tank so that all the sub-tank are full of ink. After filling all the sub-tanks, loose the pipe clamps.



③.After power on, loading ink. Load ink from ink pump and press cancel. After cleaning, choose weak cleaning to make sure that all nozzles can print.

4. How to install software and printer manager

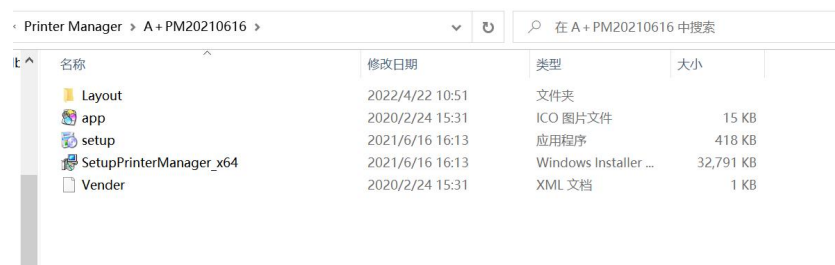
4.1 PM

Note: Before you install Printer Manger, you need to **forbid digital signature** if you use Windows 10. Or you can't install printer manager. About how to forbid digital signature on your Windows 10, please read **Win10 Setting before PM Installation.pdf**.



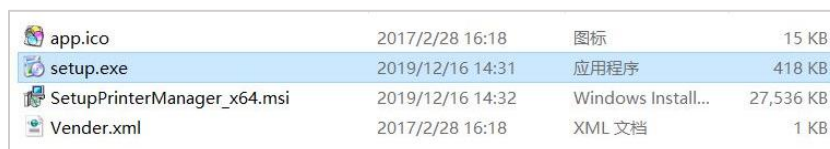
名称	修改日期	类型	大小
Cleaning Parameters	2023/5/5 17:29	文件夹	
ICC Profile_photoprint	2023/5/5 17:26	文件夹	
Layout-3H CWC	2023/5/5 17:45	文件夹	
Printer Manager	2023/5/5 17:47	文件夹	
Updater_headboard 3H	2023/5/5 17:27	文件夹	
Updater_mainboard 3H_V10.0	2023/5/5 17:24	文件夹	
Waveform	2023/5/5 17:28	文件夹	
dotNetFx40_Full_x86_x64.exe	2019/2/27 14:40	应用程序	49,268 KB
PhotoPrint Installation manual.pdf	2022/4/7 15:11	WPS PDF 文档	8,017 KB
Win10 Setting before PM Installation.pdf.pdf	2022/4/7 14:46	WPS PDF 文档	1,392 KB

(1) Open **A+PM20210616** file where printer manager locates.



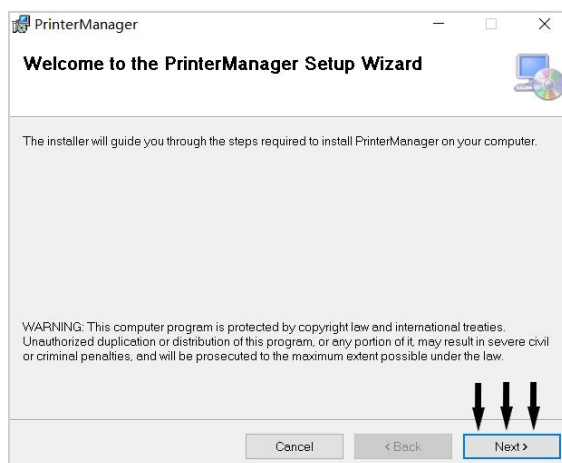
名称	修改日期	类型	大小
Layout	2022/4/22 10:51	文件夹	
app	2020/2/24 15:31	ICO 图片文件	15 KB
setup	2021/6/16 16:13	应用程序	418 KB
SetupPrinterManager_x64	2021/6/16 16:13	Windows Installer ...	32,791 KB
Vender	2020/2/24 15:31	XML 文档	1 KB

(2) Click **setup.exe** to install Printer Manager.



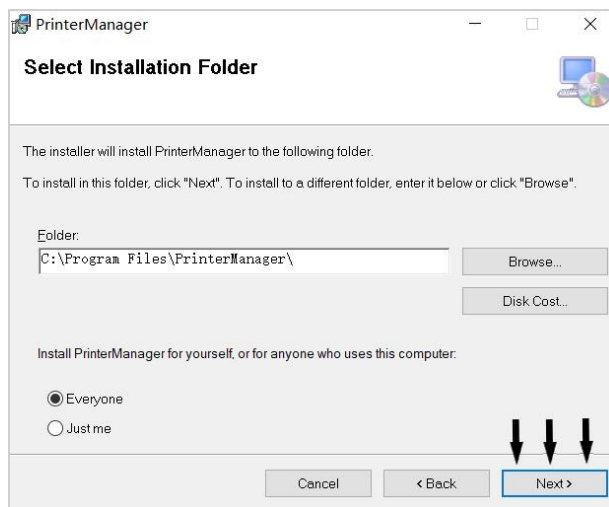
app.ico	2017/2/28 16:18	图标	15 KB
setup.exe	2019/12/16 14:31	应用程序	418 KB
SetupPrinterManager_x64.msi	2019/12/16 14:32	Windows Install...	27,536 KB
Vender.xml	2017/2/28 16:18	XML 文档	1 KB

(3) When you see the following image, then click **Next**.

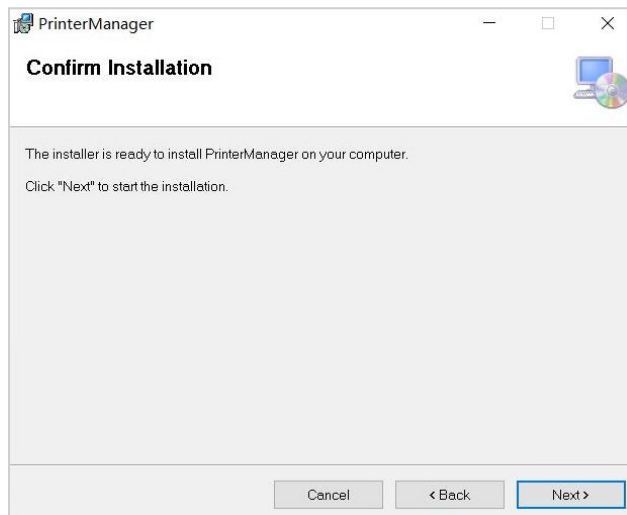


(4) When you the following, click **Browse** to choose where you want to install

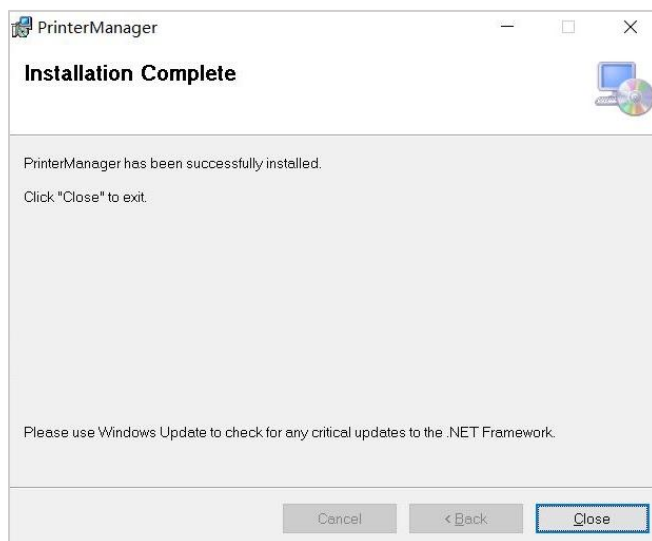
printer manager. And then click **Next**.



(5) When you see the following, click **Next** to continue.

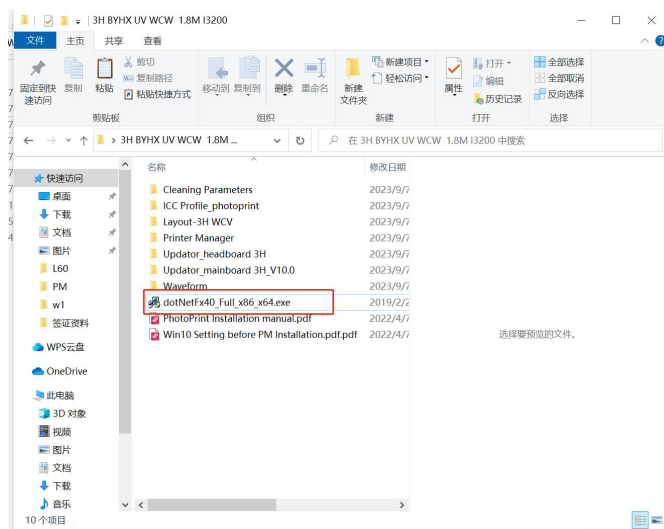
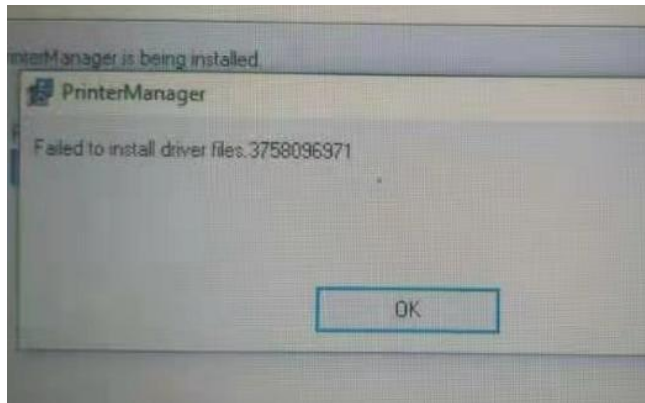


(6) After installation complete, click **Close**.



During the installation, if you see the following, it means that you

need to install computer environment **dotNetFx40 Full x86 x64.**

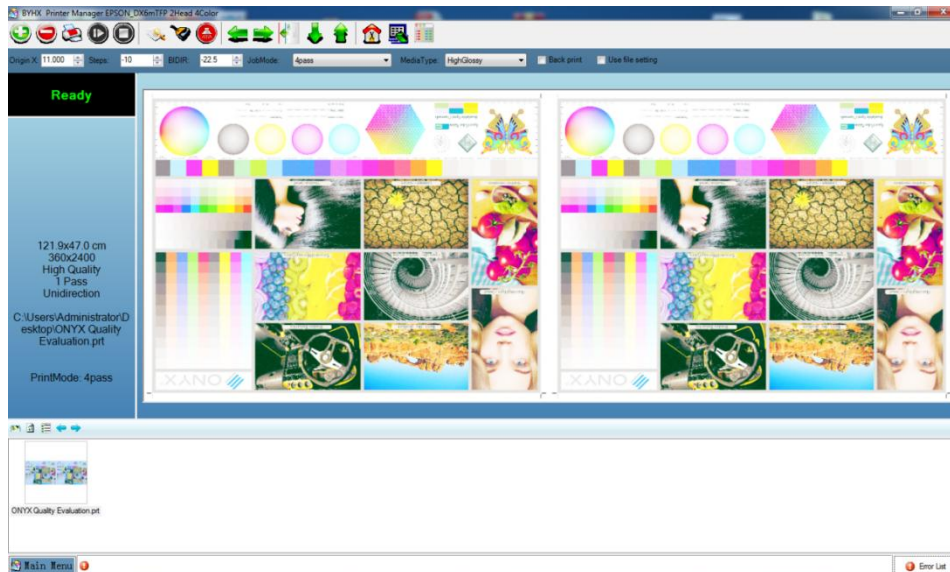


4.2 How to Use Printer Manager

1. Click the following icon

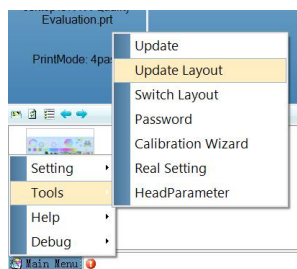


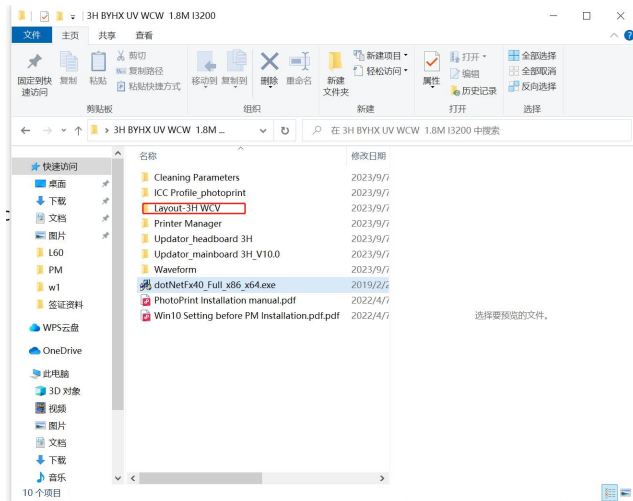
2. After you enter main menu, then we need to set the printer.



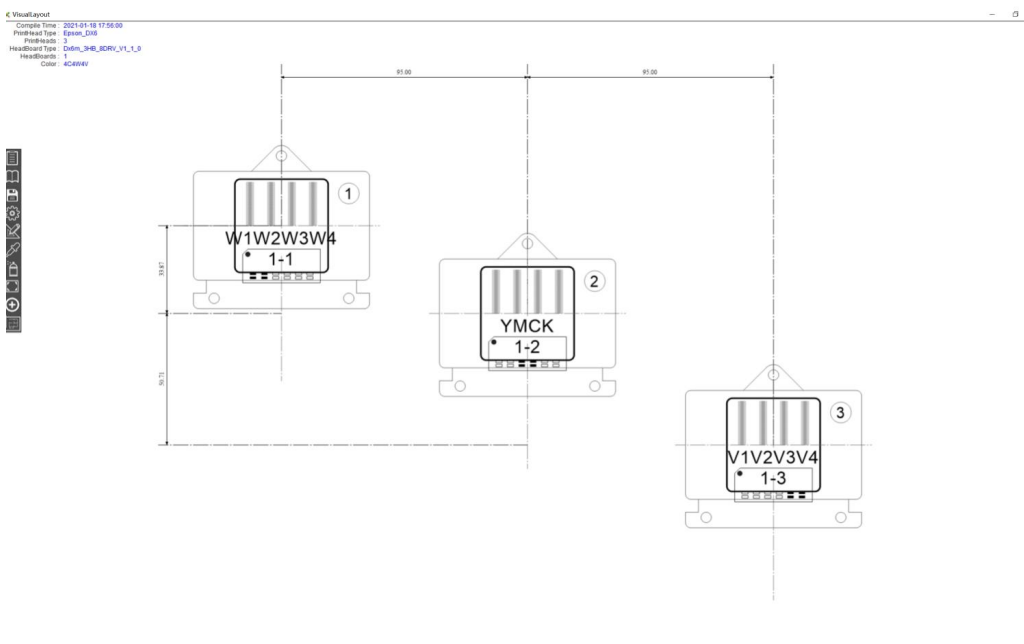
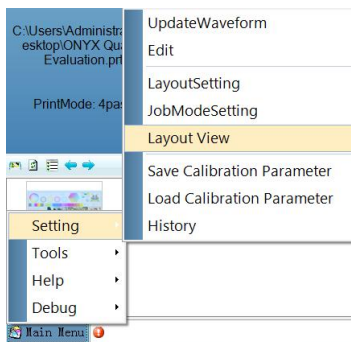
① Update head layout like the below. If your printer is single head, then choose

Layout-3H WCV.

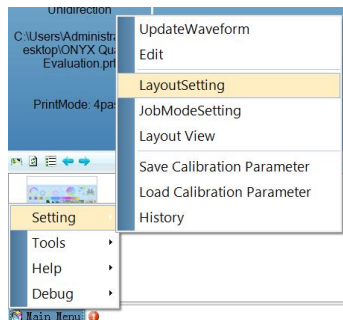




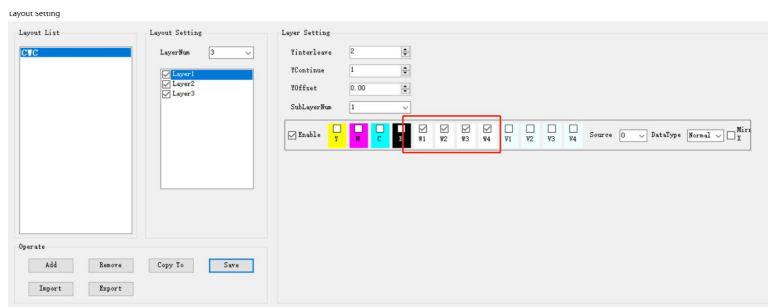
② After you update layout, please click layout view to check if you update the right one.



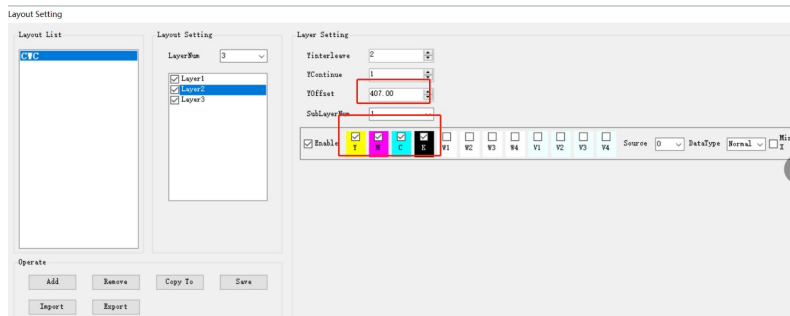
③ Layout setting



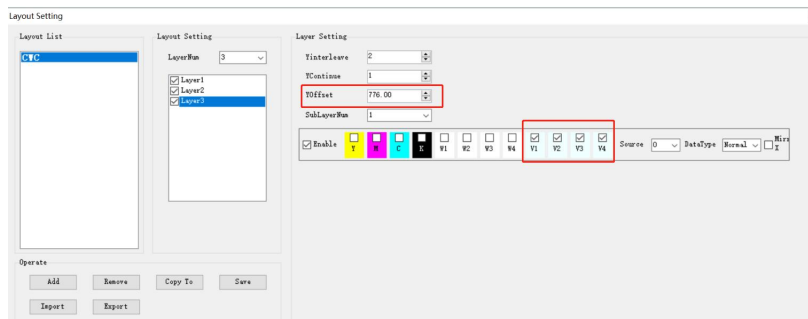
Layer1



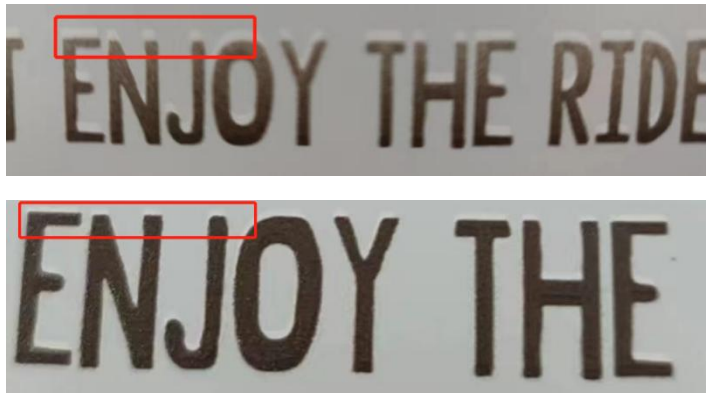
Layer2



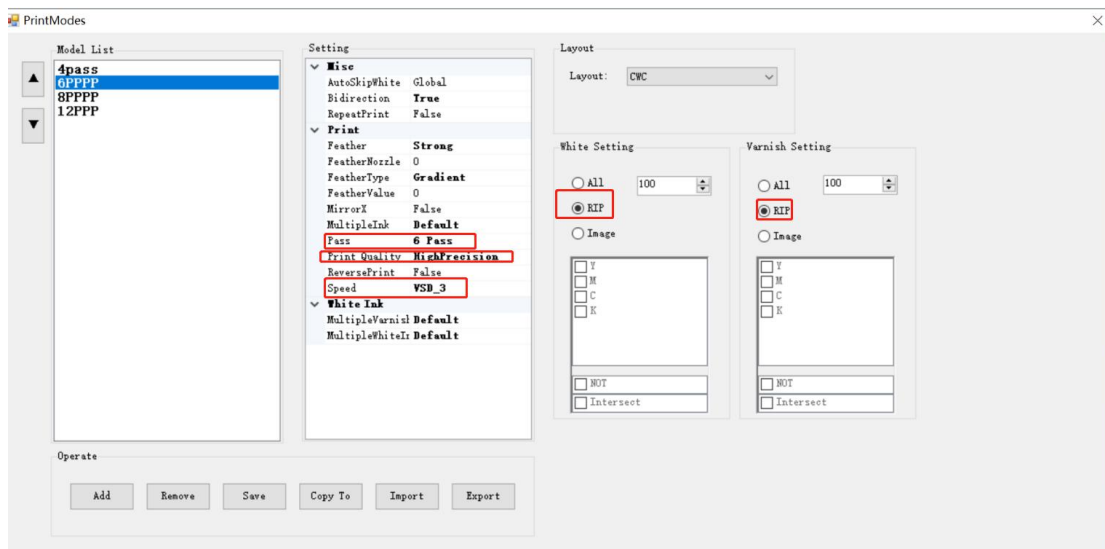
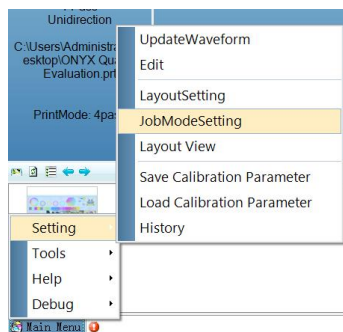
Layer3



The print screen appears y offset, adjust the Yoffset value until it completely overlaps

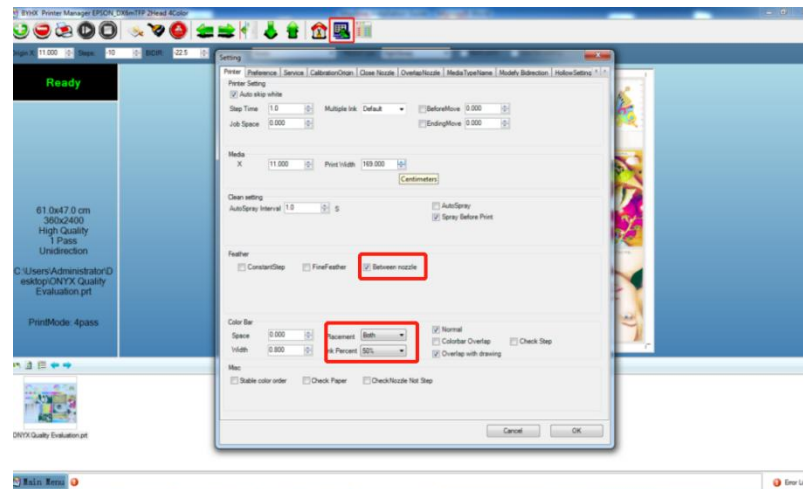


④ JobModeSetting

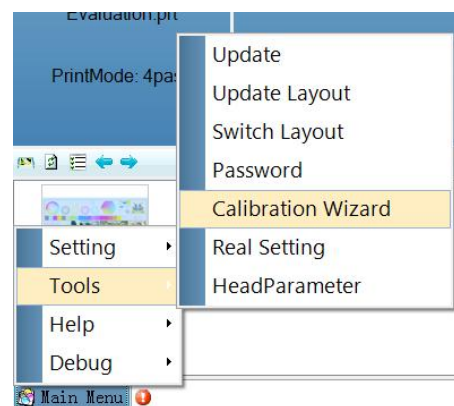


Recommend to use VSD3, strong feather, printer quality(High Precision)

⑤ Edit

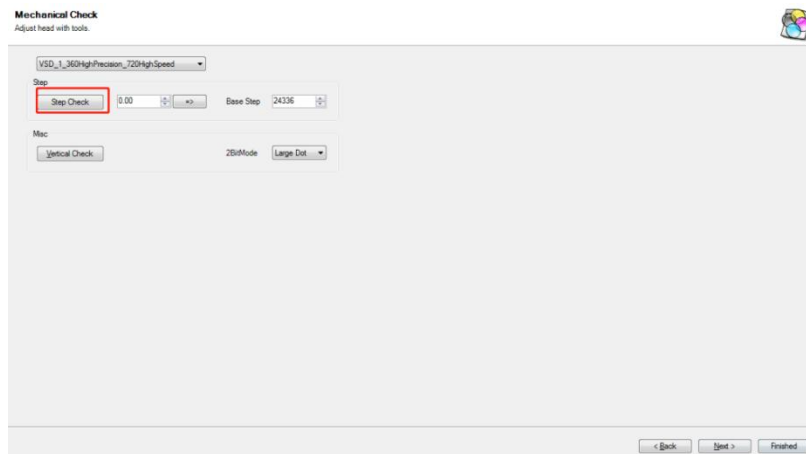


4.2 How to do Calibration

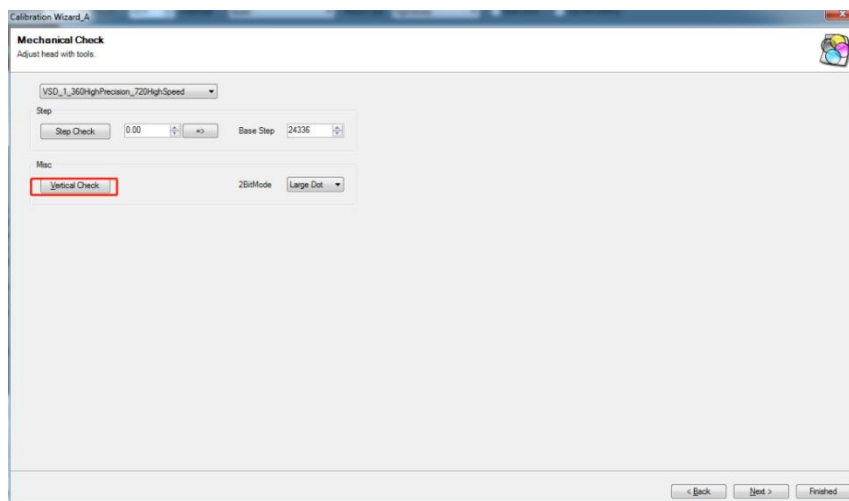


Calibration mode: Vsd 3 360 precision_720 high speed

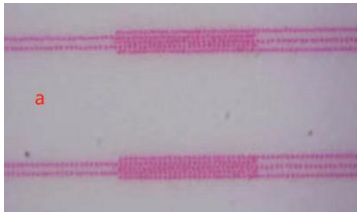
1. Step Check Enter value according to the real Calibration image. After you click step check, the printer will print a calibration image.



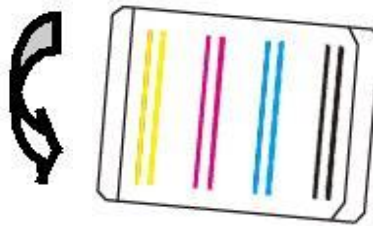
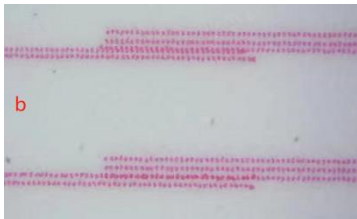
2. Vertical check Also vertical calibration, it' s to adjust head angle so that printhead is aligned with the printing platform vertically. Usually, you need to adjust screws on the head plate.



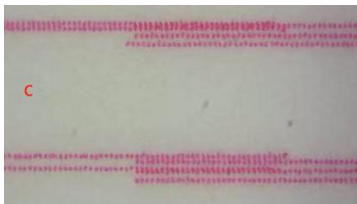
Recommend to use 80-100 magnifier to look at the right channel.



When it looks like the above, then it means your vertical check is perfect.



When condition **b** appears, it means that head lens to the right, then please adjust the screw as the arrow.



3. Horizontal calibration

(1) Bidirectional Calibration, Choose Group all Calibration

Print calibration image and enter the proper value to offset, make sure "0" is aligned perfectly.

Calibration Wizard_A Vertical Calibration

Group

Group G1 G2 G3

Left 0 7 0

Right 0 7 0

Horizontal

Bidirection: -15.0

Head 1 (V1) 3 (V3) 5 (V4) 7 (V2) 9 (V) 11 (C) 13 (K) 15 (M) 17 (V1) 19 (V3) 21 (V4) 23 (V2)

Left 0 0 0 0 0 0 0 0 0 0 0 0

Right 0 0 0 0 0 0 0 0 0 0 0 0

Vertical Overlap (Vertical)

Head Y M C K V1 V2 V3 V4 V1 V2 V3 V4

0 0 0 0 14 14 14 14 6 6 6 6

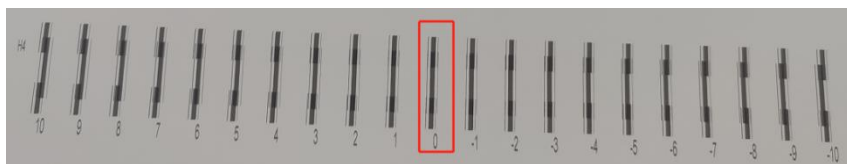
0 0 0 0 0 0 0 0 0 0 0 0

0 0 0 0 0 0 0 0 0 0 0 0

Step 4 Pass

Revised: 0.00 Step: 0 Base Step: 18315

Print Save < Back Next > Finished



3. How to Install Photoprint

["PhotoPrint Installation manual"](#) About how to install in details, please take a look at [PhotoPrint Installation manual](#).

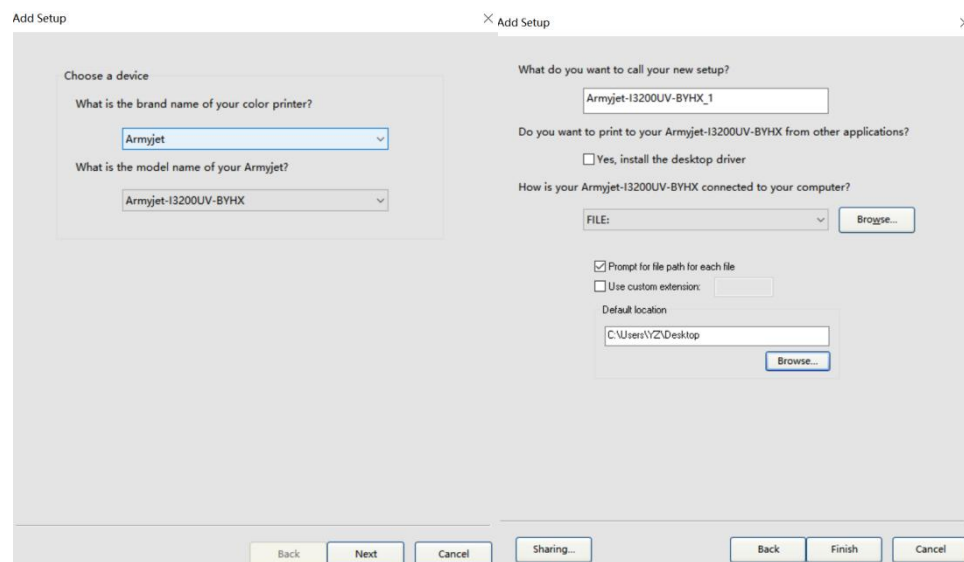
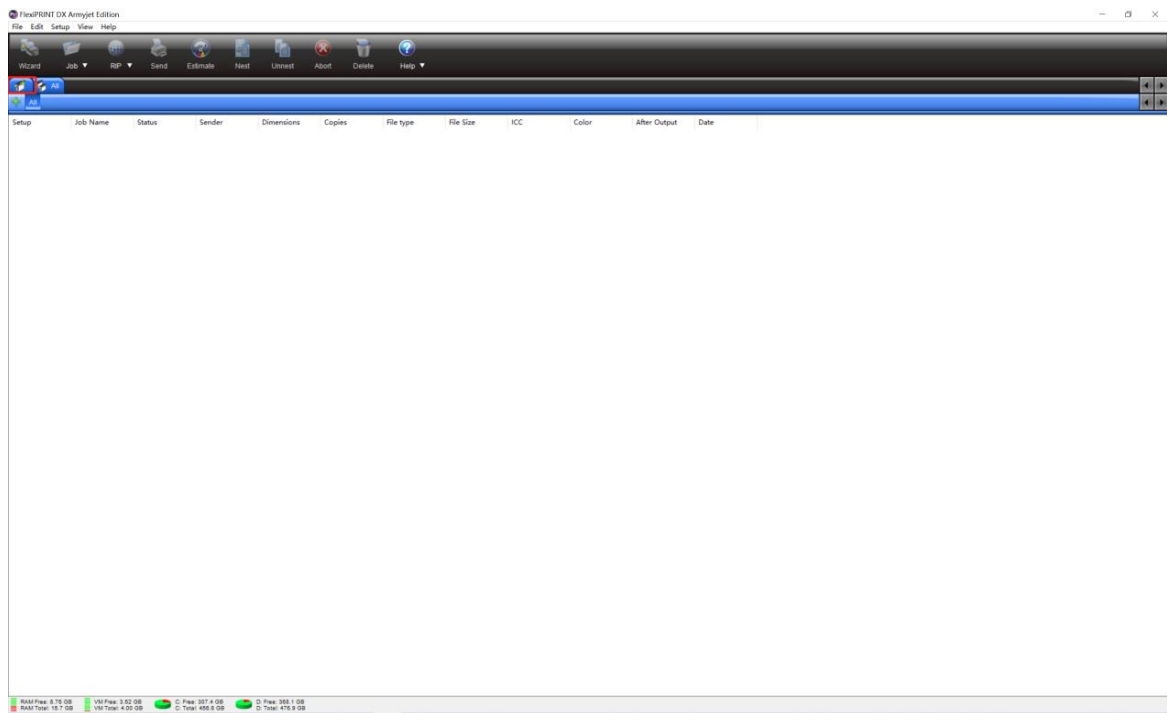
3H BYHX UV WCW 1.8M I3200

名称	修改日期	类型	大小
Cleaning Parameters	2023/9/7 15:22	文件夹	
ICC Profile_photoprint	2023/9/7 15:22	文件夹	
Layout-3H WCV	2023/9/7 15:26	文件夹	
Printer Manager	2023/9/7 15:27	文件夹	
Updater_headboard 3H	2023/9/7 15:22	文件夹	
Updater_mainboard 3H_V10.0	2023/9/7 15:22	文件夹	
Waveform	2023/9/7 15:22	文件夹	
dotNetFx40 Full x86 x64.exe	2019/2/27 14:40	应用程序	49,268 KI
PhotoPrint Installation manual.pdf	2022/4/7 15:11	WPS PDF 文档	8,017 KI
Win10 Setting before PM Installation.pdf.pdf	2022/4/7 14:46	WPS PDF 文档	1,392 KI

3.1 Click this Icon to open photoprint software.



② Add printer. Do as below.



③Open the **ICC Profile_photoprint**.

摘要 > 本地磁盘 (D:) > 飞派软件 > 出厂资料整理 > 3H BYHX UV CWC 1.8M I3200

名称	修改日期	类型	大小
Cleaning Parameters	2023/5/5 17:29	文件夹	
ICC Profile photoprint	2023/5/5 17:26	文件夹	
Layout-3H CWC	2023/5/5 17:45	文件夹	
Printer Manager	2023/5/5 17:47	文件夹	
Updater_headboard 3H	2023/5/5 17:27	文件夹	
Updater_mainboard 3H_V10.0	2023/5/5 17:24	文件夹	
Waveform	2023/5/5 17:28	文件夹	
dotNetFx40_Full_x86_x64.exe	2019/2/27 14:40	应用程序	49,268 KB
PhotoPrint Installation manual.pdf	2022/4/7 15:11	WPS PDF 文档	8,017 KB
Win10 Setting before PM Installation.pdf.pdf	2022/4/7 14:46	WPS PDF 文档	1,392 KB

④ Copy all the files as below.

摘要 > 本地磁盘 (D:) > 飞派软件 > 出厂资料整理 > 3H BYHX UV CWC 1.8M I3200 > ICC Profile_photoprint > Armyjet-I3200UV-BYHX

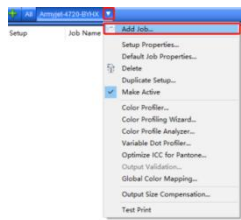
名称	修改日期	类型	大小
AJ-BYHX-I3200-UV1-4PASS 360x2400 .icc	2023/5/5 15:28	ICC 配置文件	1,327 KB
AJ-BYHX-I3200-UV1-6PASS 360x3600 .icc	2023/5/5 16:01	ICC 配置文件	1,382 KB
AJ-BYHX-I3200-UV1-8PASS 360x4800 .icc	2023/5/5 16:13	ICC 配置文件	1,382 KB
AJ-BYHX-I3200-UV1-12PASS 720x3600 .icc	2023/5/5 16:25	ICC 配置文件	1,326 KB
AJ-BYHX-I3200-UV1-high-8PASS 360x4800...	2023/5/5 16:19	ICC 配置文件	1,326 KB

⑤ Open the file where you install photoprint and find ICC profile→I3200UV-BYHX, and the paste them here.

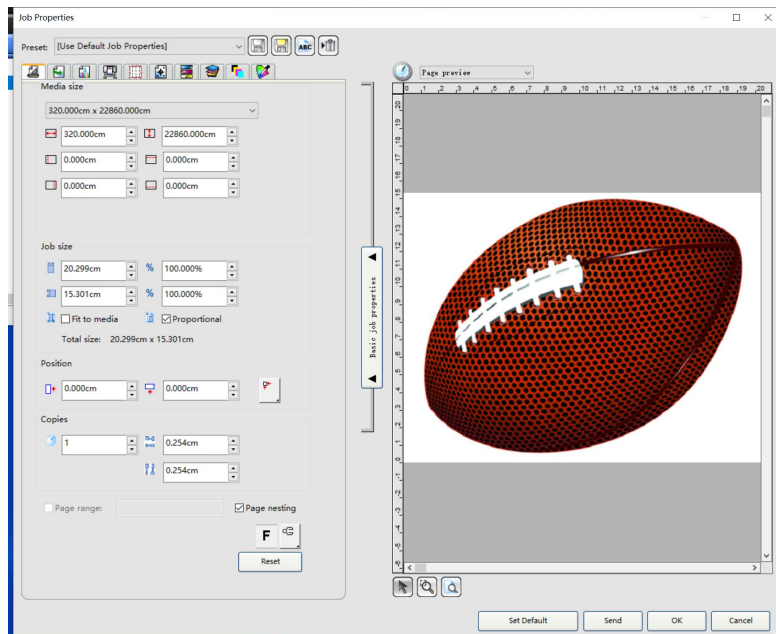
OS (C:) > Program Files (x86) > SAI > FlexiPRINT 19 Armyjet Edition > ICCProfile > Armyjet-I3200UV-BYHX

名称	修改日期	类型	大小
AJ-BYHX-I3200-UV1-4PASS 360x2400 .icc	2023/5/5 15:28	ICC 配置文件	1,327 KB
AJ-BYHX-I3200-UV1-6PASS 360x3600 .icc	2023/5/5 16:01	ICC 配置文件	1,382 KB
AJ-BYHX-I3200-UV1-8PASS 360x4800 .icc	2023/5/5 16:13	ICC 配置文件	1,382 KB
AJ-BYHX-I3200-UV1-12PASS 720x3600 .icc	2023/5/5 16:25	ICC 配置文件	1,326 KB
AJ-BYHX-I3200-UV1-high-8PASS 360x4800...	2023/5/5 16:19	ICC 配置文件	1,326 KB

⑥ Add Job



Edit the image



Choose output profile and then click Send.

