

+



ARMYJET

AJ-6004IUV(Hoson)

Armyjet Manual for new printer installation

Warning

This manual is only suitable for Armyjet printers with hoson boards. If you install other non-Armyjet printers and meet problems, Armyjet will not take responsibility. Armyjet owns the full copyright of this manual.

Armyjet will update its printers each year. So there may have some differences from the real printers.

1 Notes about installation

1.1 Installation environment

- Be sure that there is enough space
- Good environment: Temperature within 20-30°C, moisture within 40-60%
- Far away from sunshine, strong light and fire
- No dust.

1.2 Cautions

- Armyjet Power cable can only be used on Armyjet printers. Original power cable is more stable.
- The printer should be connected to outlet with earth wires.
- Power should meet local requirements.
- Don't use damaged wires
- Earth wire should be installed correctly.

1.3 Cautions in operation

- After power on, don't touch head and head cable
- If you need to move printer or replace any parts like head or head cable, please power it off first.
- Clean or do maintenance on the printer, please power off the printer first.
- Never pour off waste ink into natural waters or something like it.
- Once you open the ink bottle, please use it as soon as possible. It's bad for printing quality after you open the ink bottle for a long time and don't use it.
- Don't knock or shake the ink bottle, it will spill out ink.
- Keep the printer clean. Dust or liquid will cause electric leakage.
- Don't use high pressure air rifle to clean the printer.

1.4 Personnel Security Guide

- Keep the ink out the reach of Children.
- Never drink ink. If you happen to swallow some ink, please see the doctor as soon as possible.
- If some ink spills out on your skin, please clean with lots of water and some soap immediately.
- If ink happens to enter your eyes, please clean it with clean water.
- Add or replace ink or something others related to ink, please wear glove, surgical mask, and protective eye shields.

Part list



Item	Name	Quantity	
①	Power cable	1	
②	PP MINIUV	1	
③	Ethernet Cable	1	
④	Power cable of water tank	1	
⑤	Tools	1	
⑥	UV Protective Goggle	1	
⑦	Syringe	1	
⑧	Origin Sensor	1	
⑨	Head cable	14	
⑩	UV ink tube	1m	
⑪	Flash drive	1	
⑫	Ink dampers	2	
⑬	Protective Glove	1	
⑭	Screw M5X16	20	
	Screw M3X6	12	

2. Printer installation

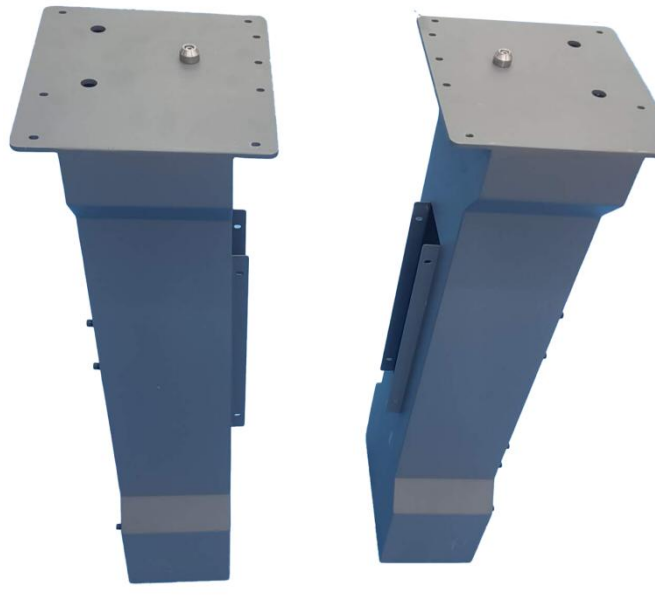


2.1 Pedestal Installation

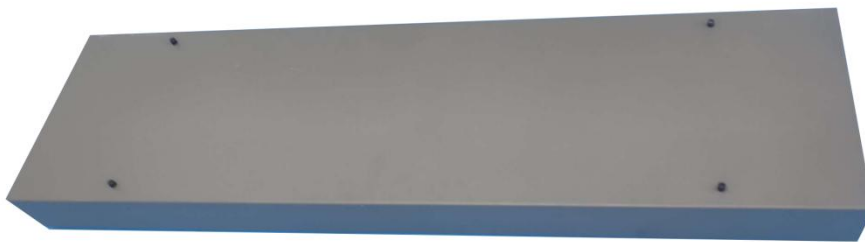
2.1.1 Pedestal parts



1. Foot stool



2. Leg



3. Pull Rod



4.Waste ink bottle



5. water tank fixture



6. mechanical fastener system



7. Take up system



8. Take up system



9. water tank

2.1.2 Pedestal Installation

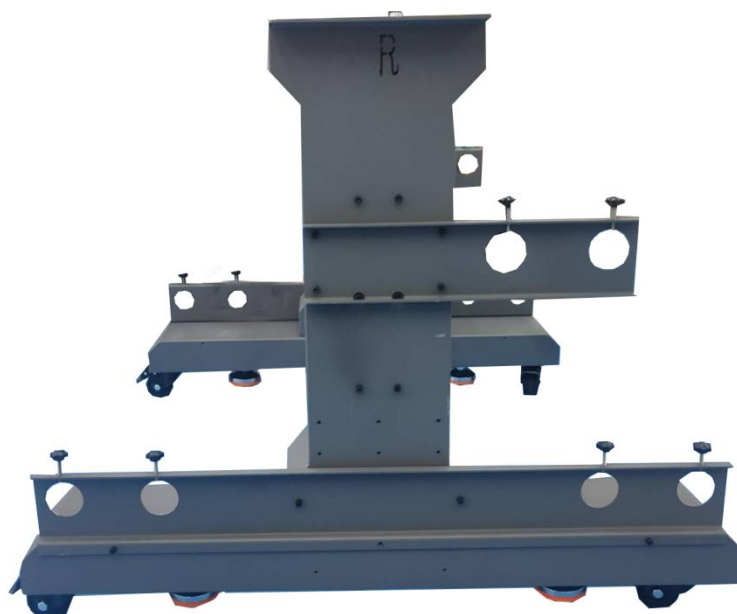
Spet; 1



Spet; 2



Spet: 3



Spet: 4



Spet; 5



In front



back

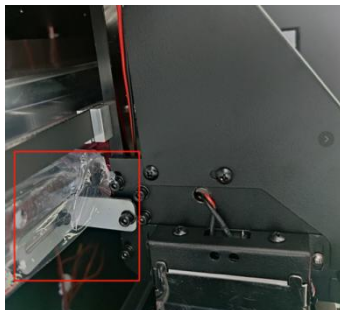
2.3 Ink supply system installation



3. Printer Adjustment

3.1 Before power on your printer

Before you power on the printer, please remove the fixing parts on the carriage and peel off the film on the guide rail.





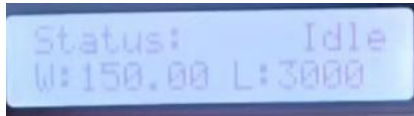
Printing Panel



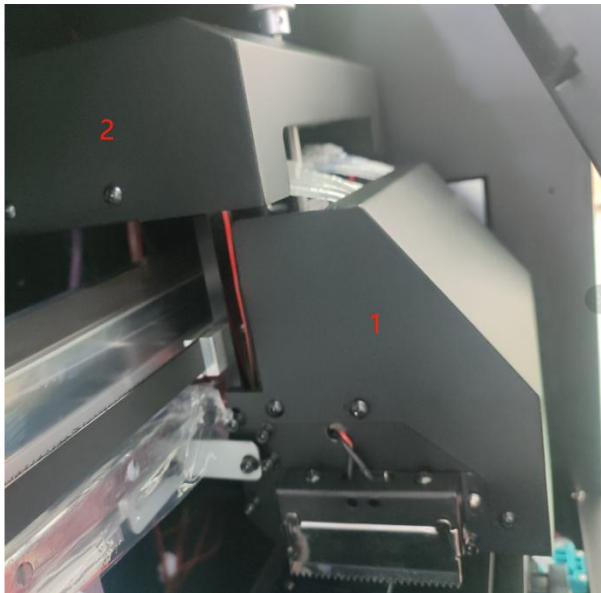
3.3 How to install printhead

3.3.1 Before installing printhead

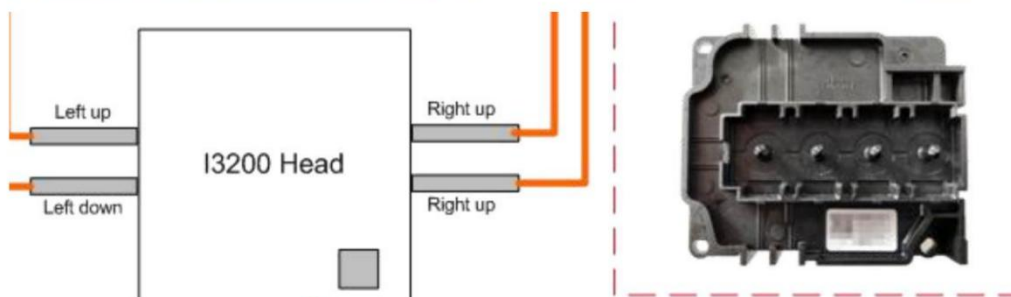
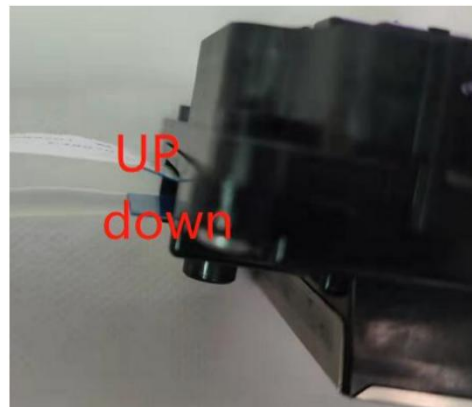
1. After initialization, screen will show like below. And then test all functions from the panel and then power off the printer.

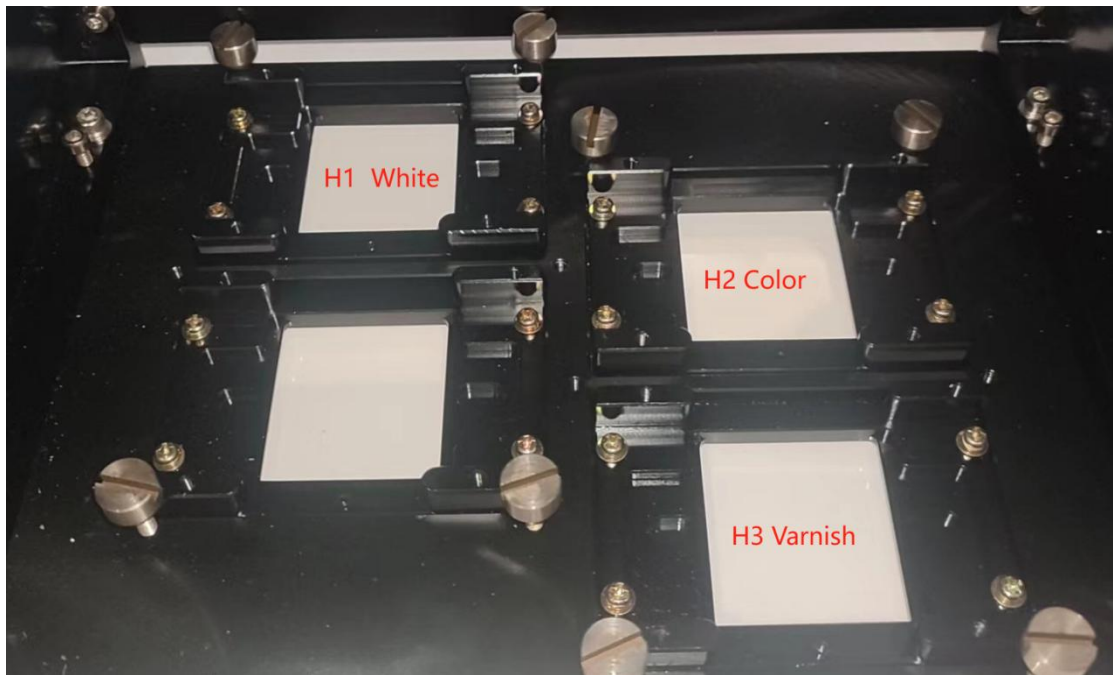
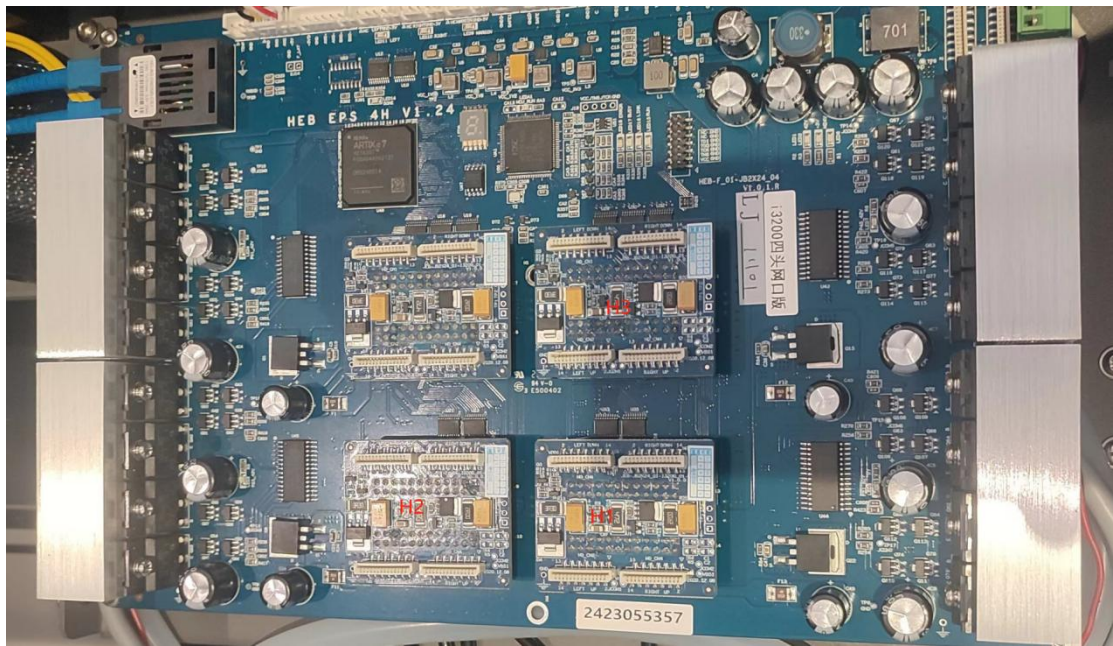


2. Remove the carriage cover and head board cover



3. Install Printhead





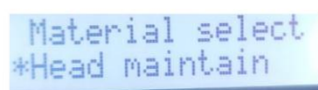


Connect head cable carefully, or it will burn your head or head board.

②.Install head on head plate like below.

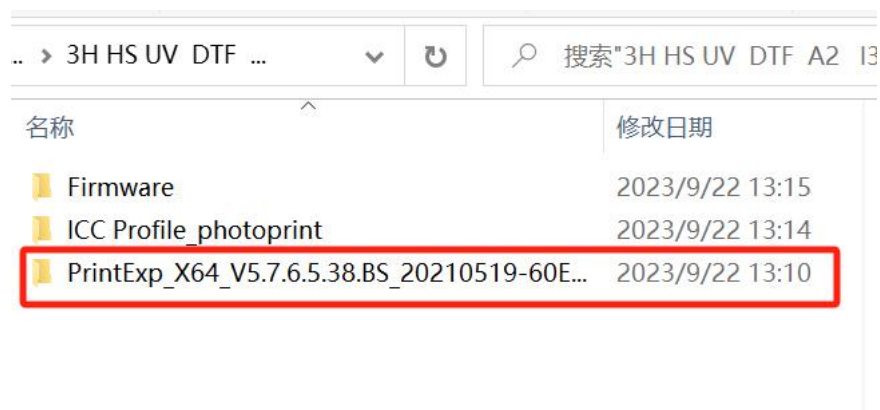
③.After power on, loading ink. Load ink from ink pump and press cancel. After cleaning, choose weak cleaning to make sure that all nozzles can print.

Menu→Head maintain→Fill ink

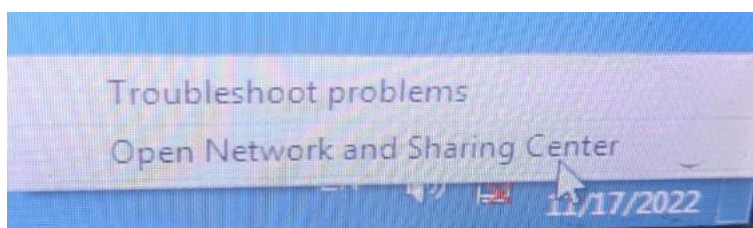


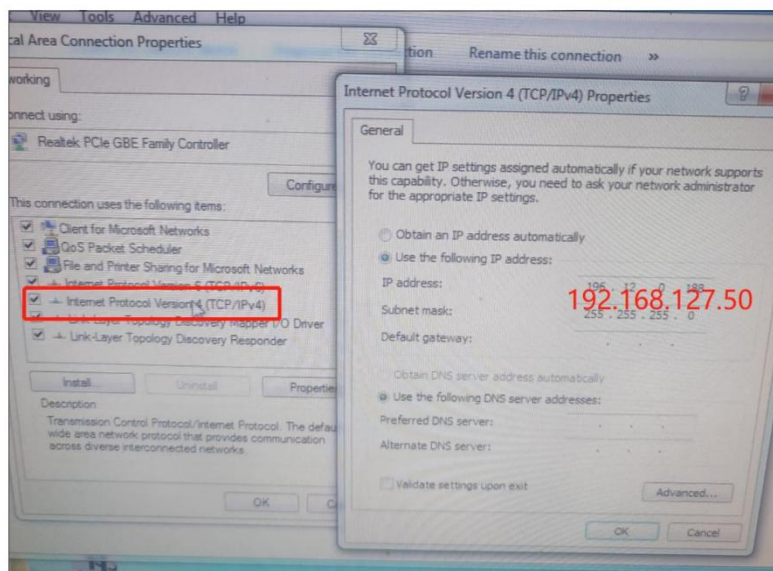
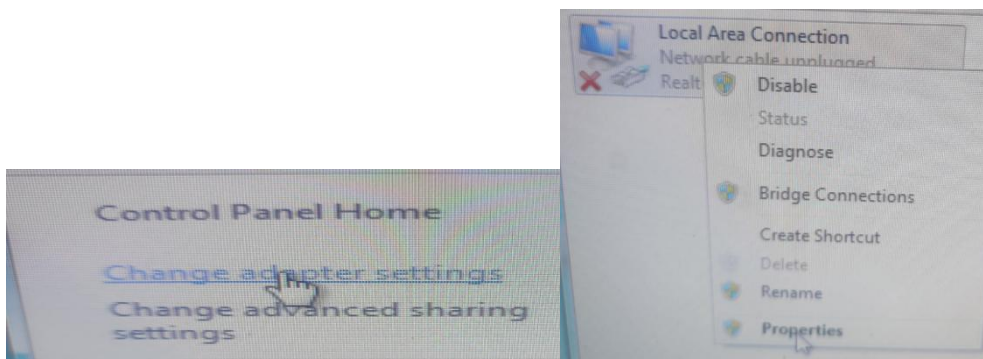
4. How to install software

Don't need to install the software. Just click " PrintExp" and then you can use it.

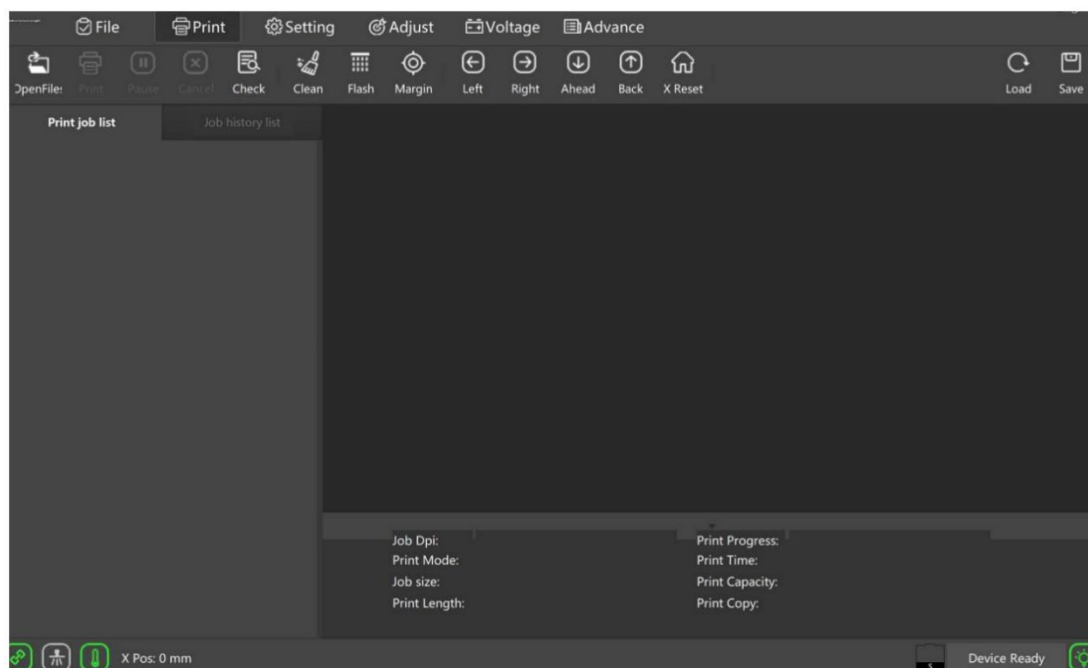


4.1 Connect printer with computer, you need to use the IP address we offer.

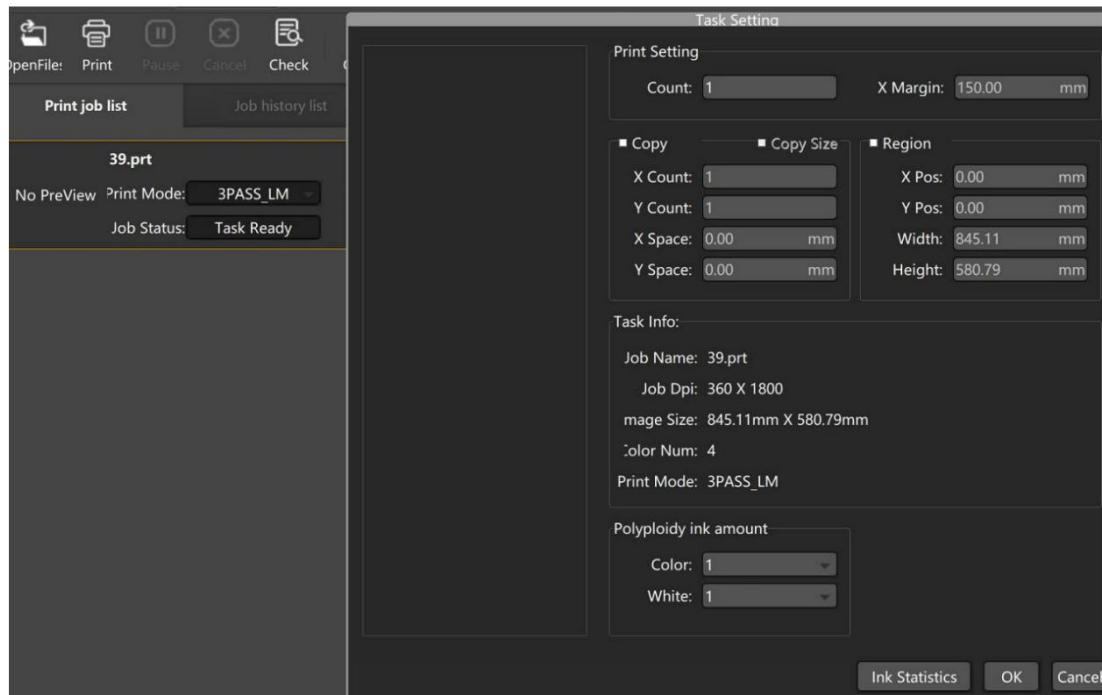




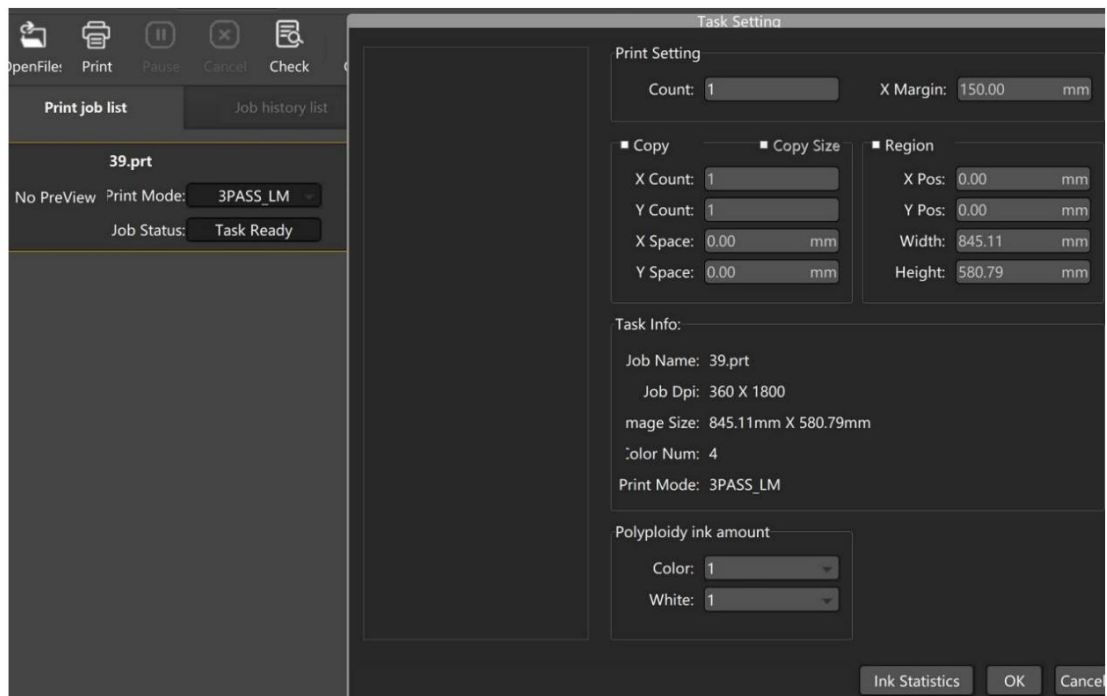
4.2 Open the software, after it turns green, then it means that it's connected successfully.



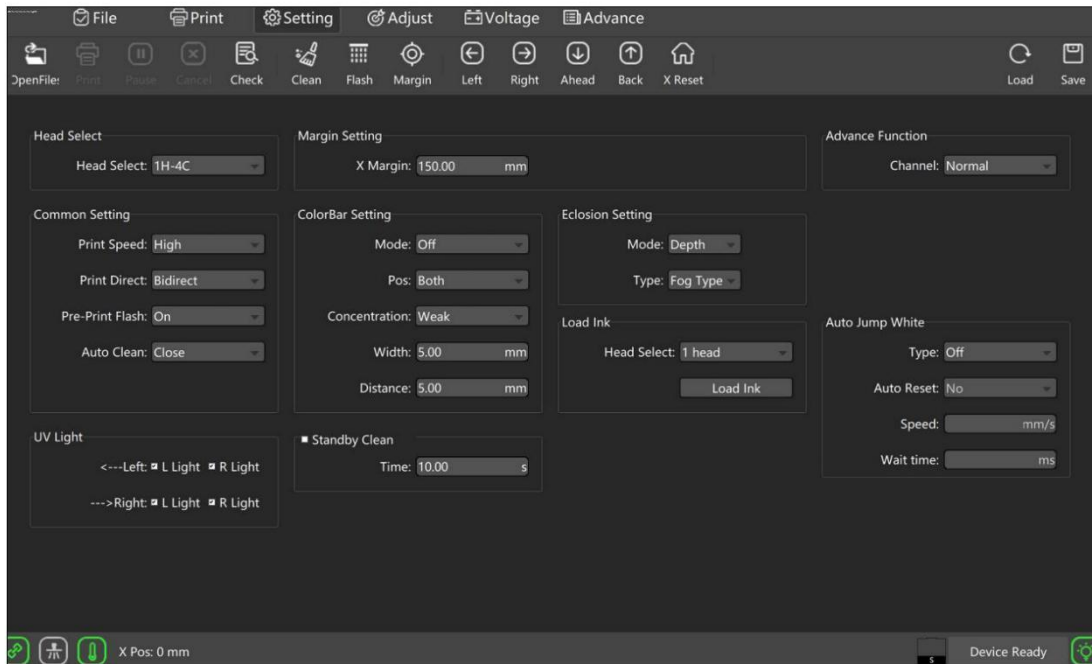
4.3 Open file, Connect



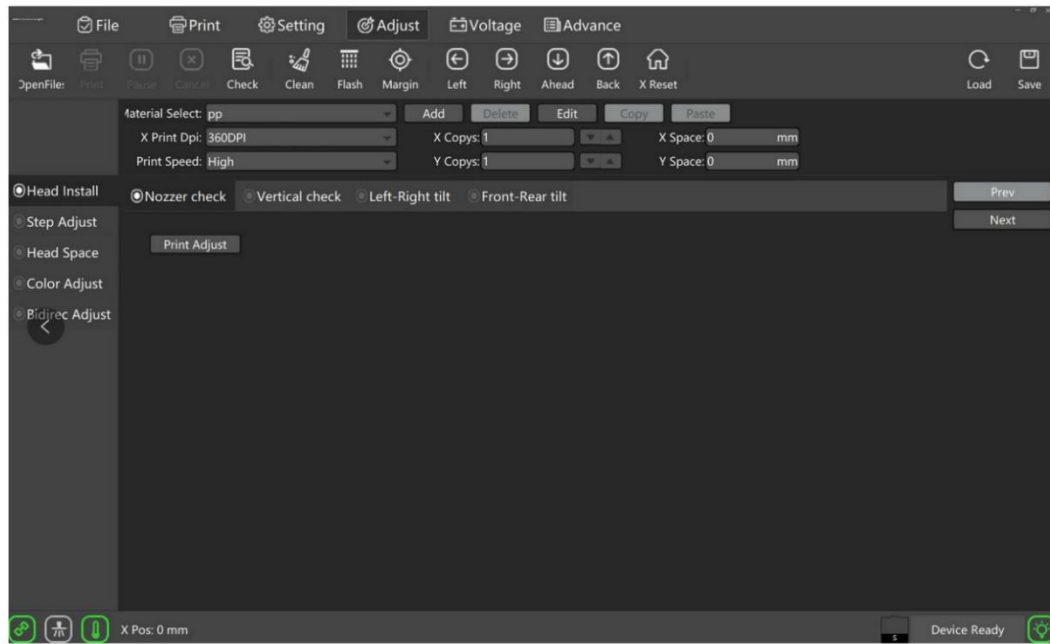
4.4 Open file, add the file you want to print



Save Set it according to your needs. Each time you change your setting, please press save.



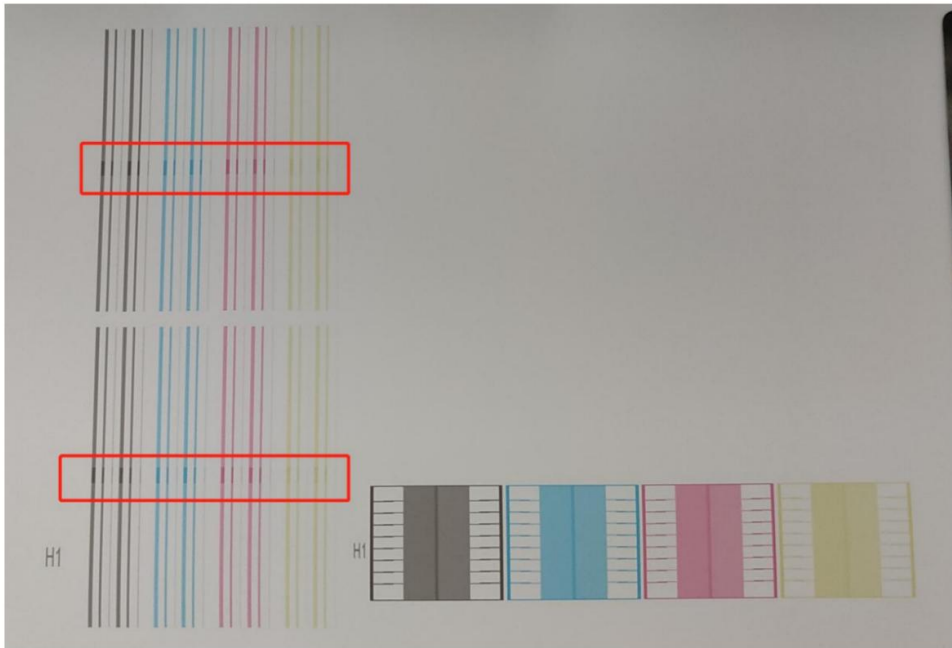
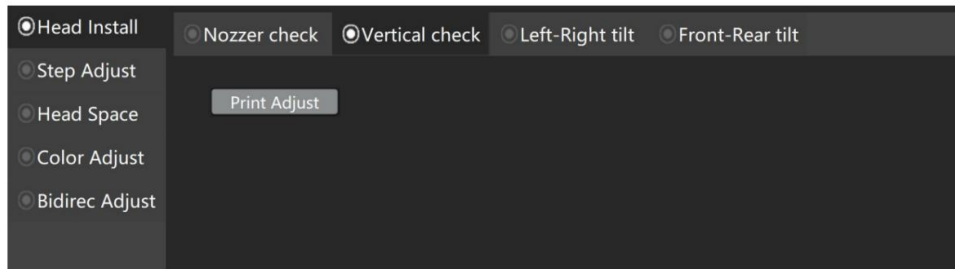
4.5 Calibration: After you do all, then finish



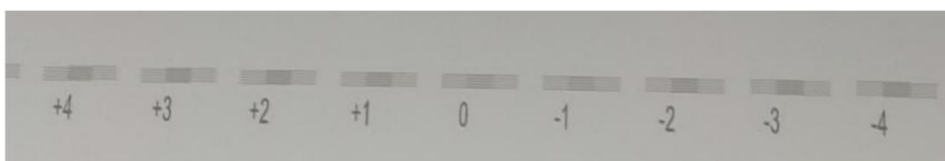
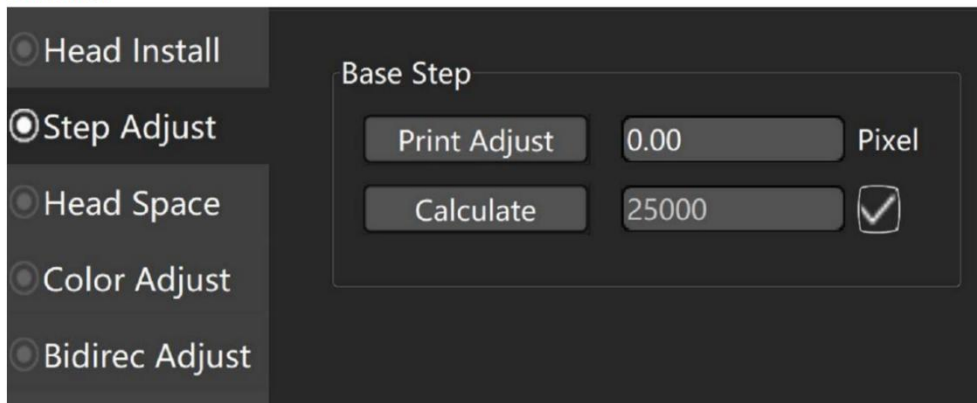
- ① **Head nozzle check** Please clean the head until all head nozzle are normal as below.



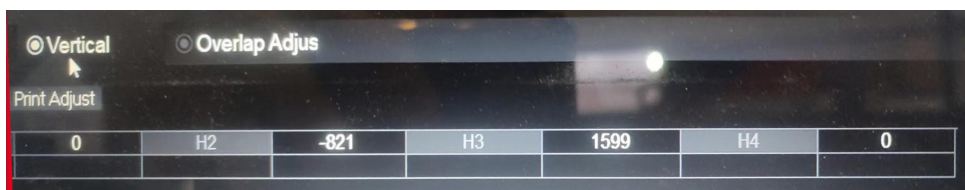
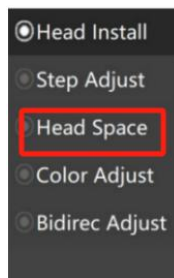
②**Vertical check** Adjust the angle to make sure that your head is vertical, and all alignment is good.



③**Step Adjust** Adjust the value according the calibration image you print. Make sure that 0 is coincided.

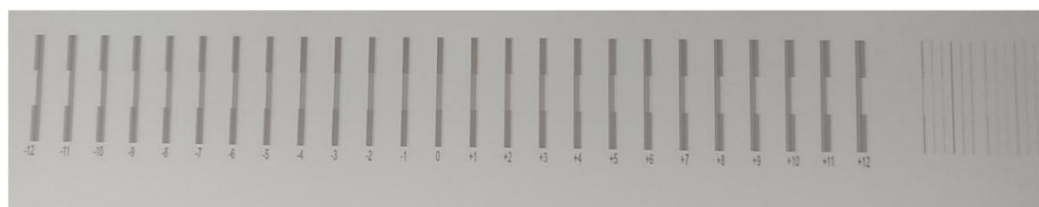
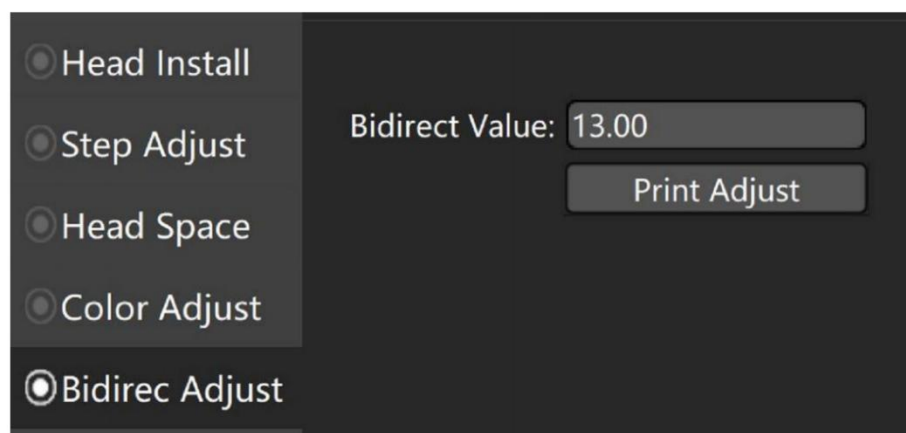


④ Head Space



⑤ Bidirectional calibration

Adjust the value according the calibration image you print. Make sure that 0 is fully coincided.



5.How to Install Photoprint

[“PhotoPrint Installation manual”](#) About how to install in details, please take a look at [PhotoPrint Installation manual](#).

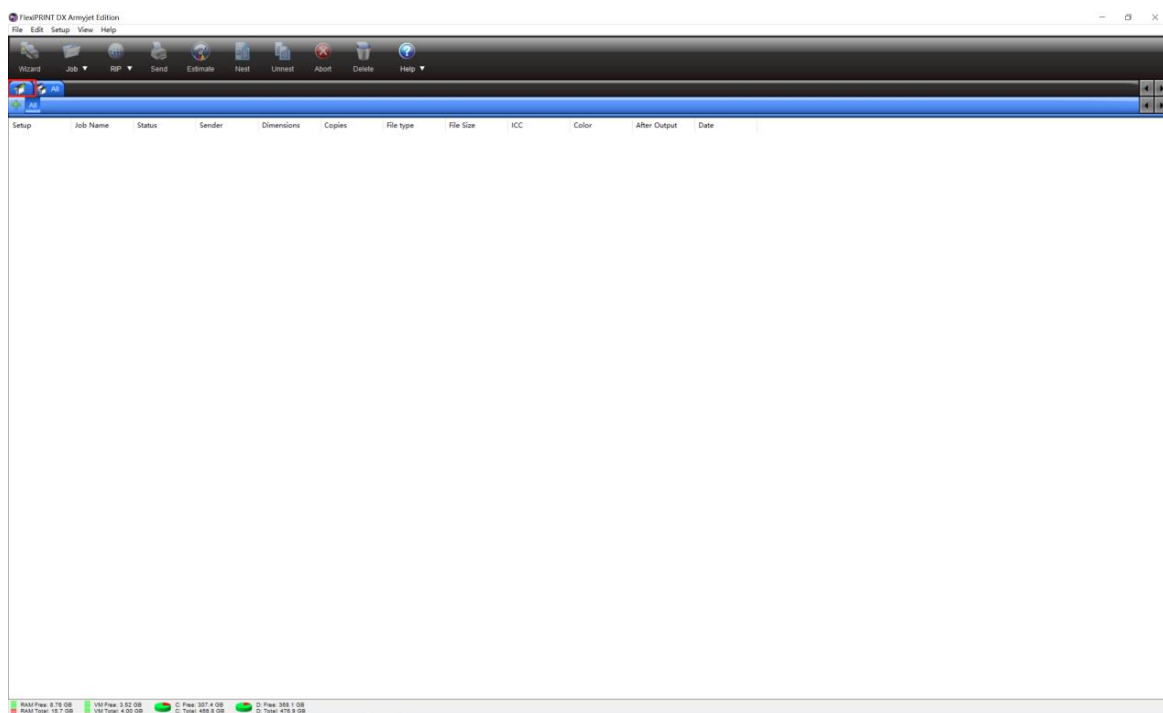
电脑 > 本地磁盘 (D:) > 飞派软件 > 出厂资料整理 > 3H HS UV DTF A2 I3200 >

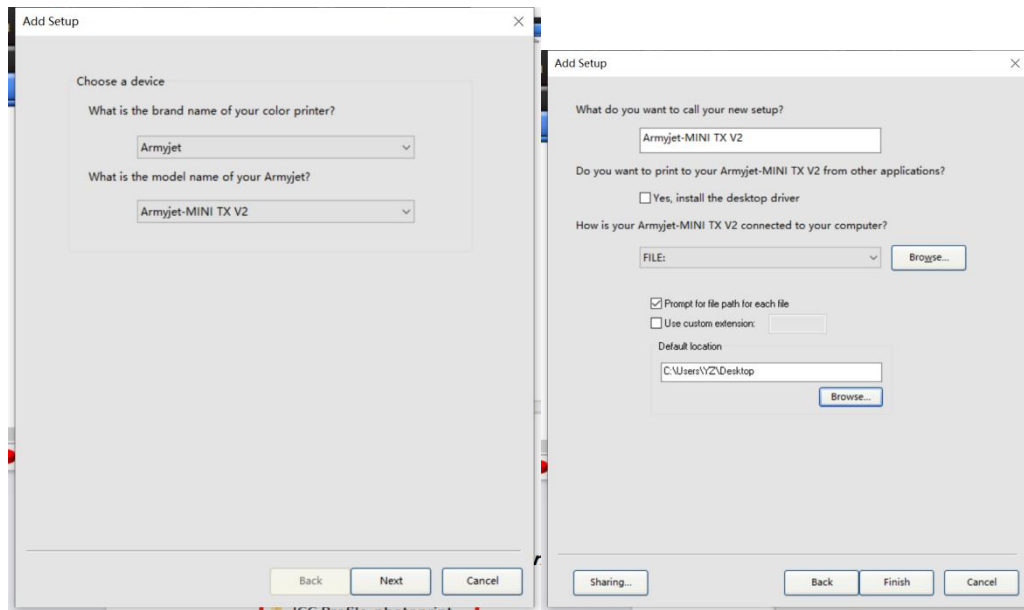
名称	修改日期	类型	大小
Firmware	2023/9/22 13:15	文件夹	
ICC Profile_photoprint	2023/9/22 13:14	文件夹	
PrintExp_X64_V5.7.6.5.38.BS_20210519-60E...	2023/9/22 13:10	文件夹	
AI-6004IIUV(Hoson) for new printer installat...	2022/12/6 10:48	WPS PDF 文档	3,365 KB
PhotoPrint Installation manual.pdf	2022/4/7 15:11	WPS PDF 文档	8,017 KB

①Click this Icon to open photoprint software.



② Add printer. Do as below.





③ Open the **ICC Profile_photoprint**

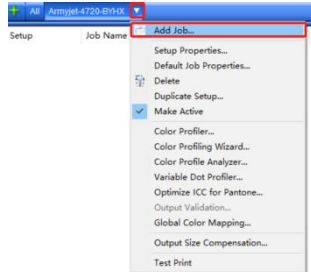
名称	修改日期
Firmware	2023/9/22 13:15
ICC Profile_photoprint	2023/9/22 13:14
PrintExp_X64_V5.7.6.5.38.BS_20210519-60E...	2023/9/22 13:10

名称	修改日期
OutputDrivers	2023/9/22 13:14
AJ-HS-I3200-UV-DTF-6PASS V720x1800 6P...	2023/9/16 15:06
AJ-HS-I3200-UV-DTF-8PASS V720x2400 8P...	2023/9/22 13:12

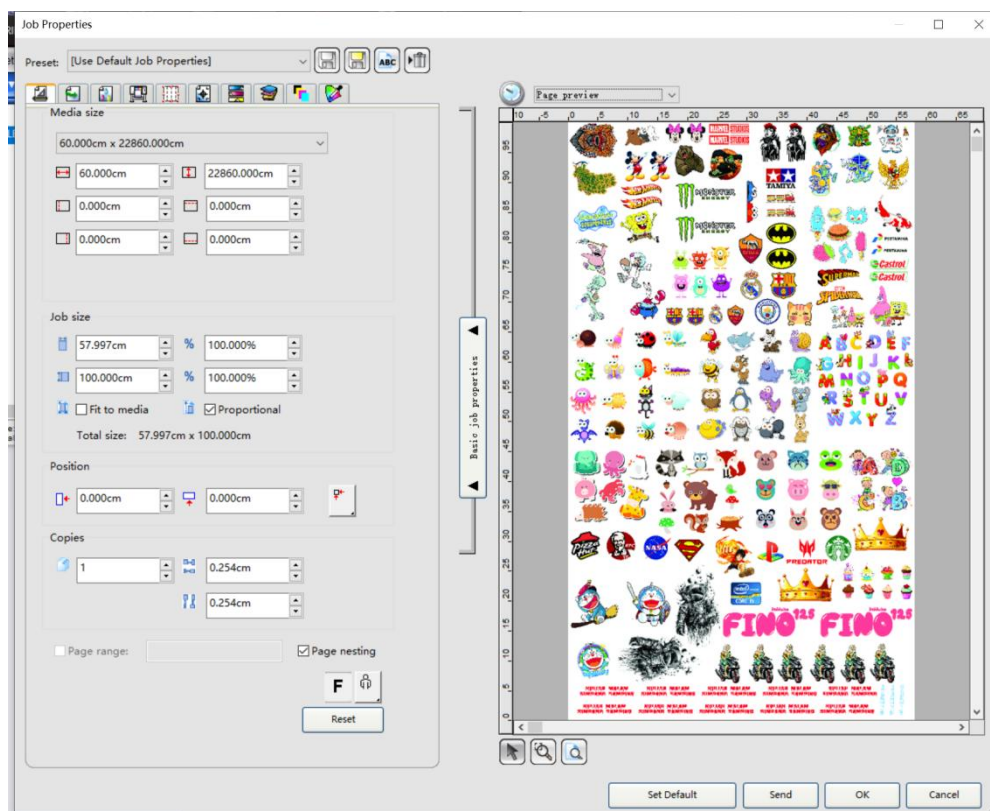
⑤ Open the file where you install photoprint and find ICC profile→Epson-TX,

and the paste them here.

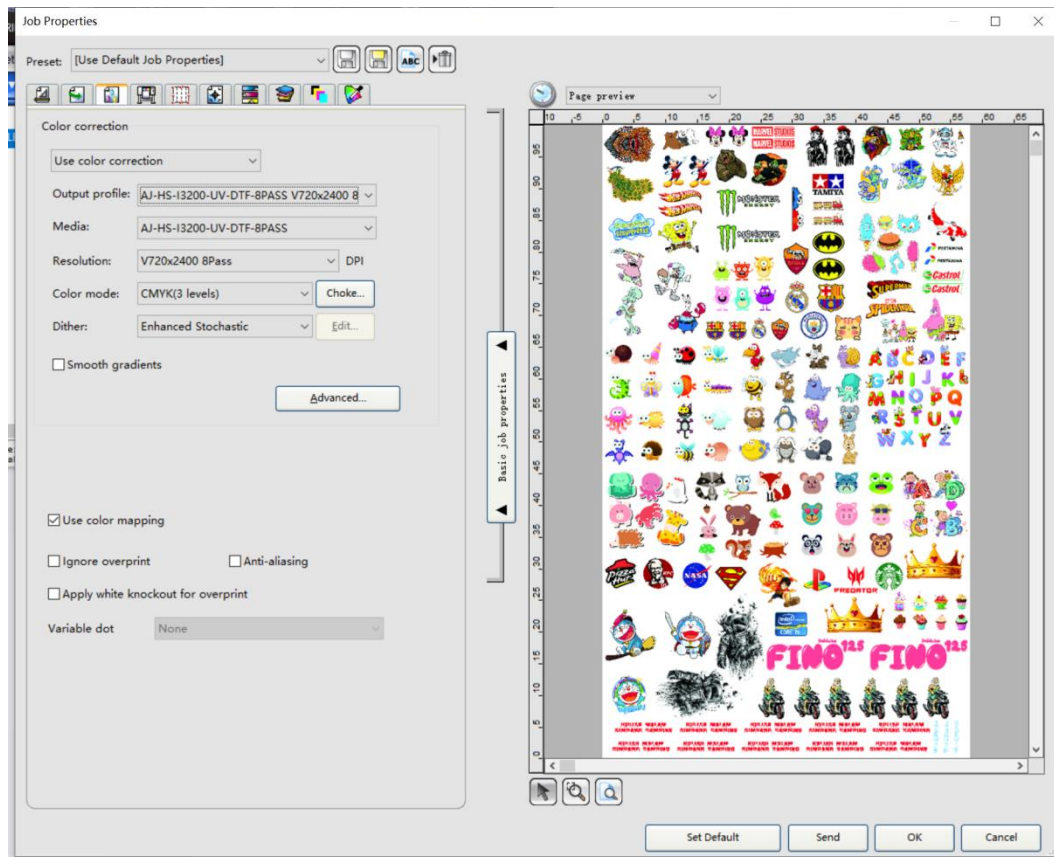
⑥ Add Job



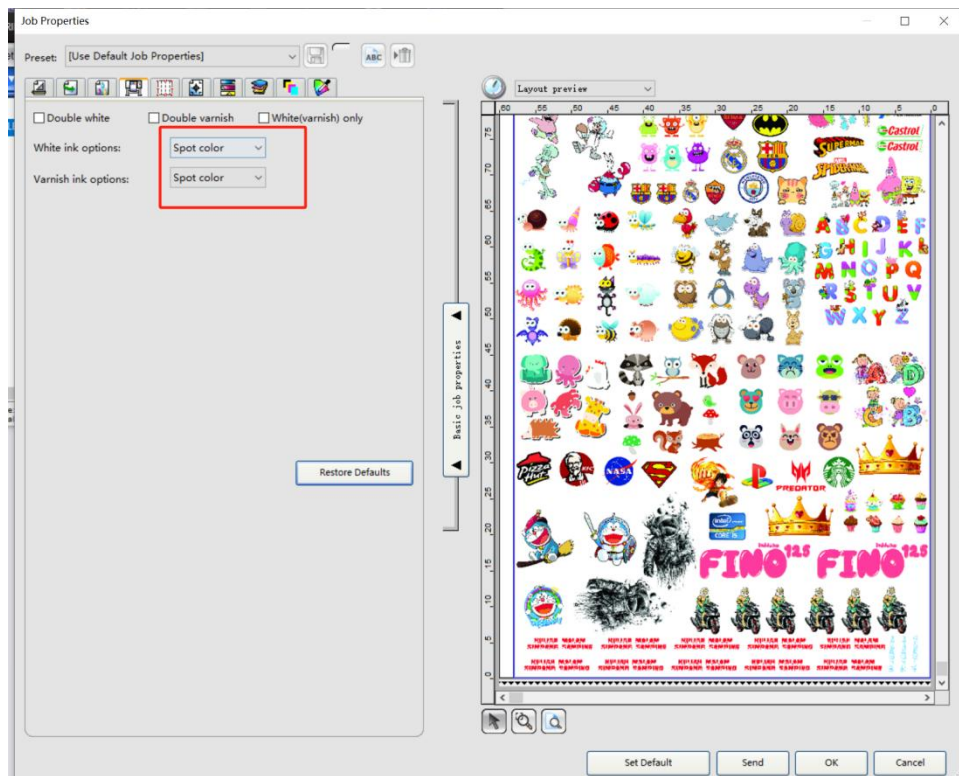
Edit the image



Choose output profile and then click Send.



Choose Spot color



Choose the type of spot color

